

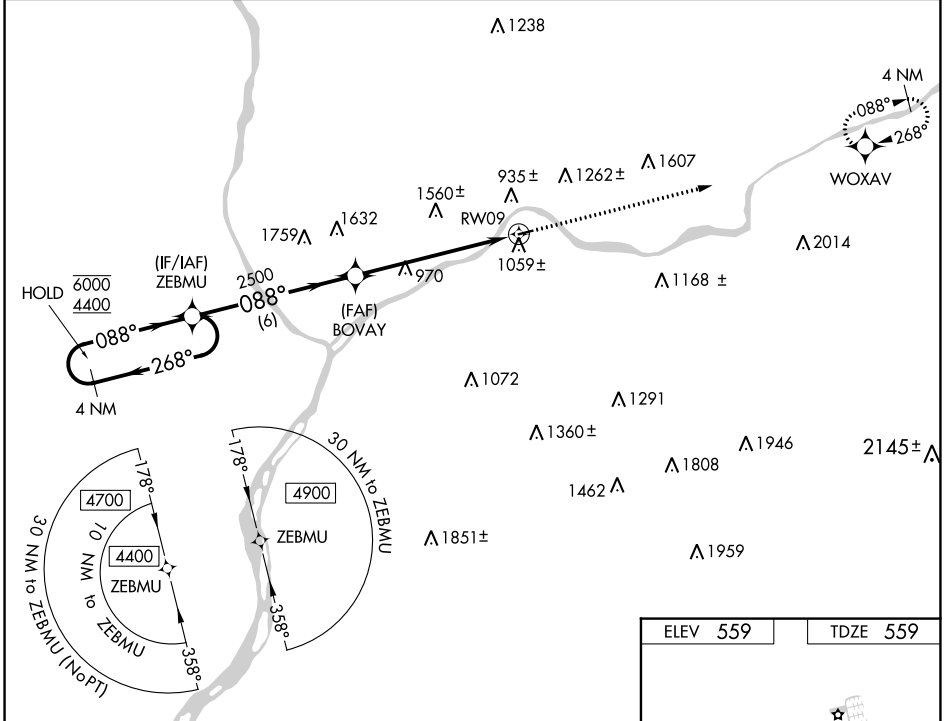
WAAS CH <b>65827</b> <b>W09A</b>	APP CRS <b>088°</b>	Rwy Idg TDZE Apr Elev	<b>3000</b> <b>559</b> <b>559</b>
--	------------------------	-----------------------------	---

# RNAV (GPS) RWY 9

DANVILLE (8N8)

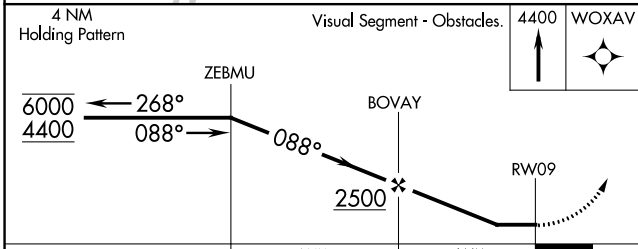
RNP APCH	MISSED APPROACH: Climb to 4400 direct WOXAV and hold, continue climb-in-hold to 4400.
<p>▼ Rwy 9 helicopter visibility reduction below 1 SM NA.</p> <p>▲ NA Procedure NA at night.</p> <p>Use Penn Valley altimeter setting; when not received, procedure NA.</p>	

SEG ASOS <b>123.975</b>	WILKES-BARRE APP CON <b>126.3 256.7</b>	UNICOM <b>122.8 (CTAF) 0</b>
----------------------------	--	---------------------------------



NE-4, 22 FEB 2024 to 21 MAR 2024

NE-4, 22 FEB 2024 to 21 MAR 2024



CATEGORY	A	B	C	D
LP MDA	1280-1¼ 721 (800-1¼)	1280-1½ 721 (800-1½)		NA
LNAV MDA	1360-1¼ 801 (900-1¼)	1360-1½ 801 (900-1½)		NA
◻ CIRCLING	1480-1¼ 921 (1000-1¼)	1760-1½ 1201 (1300-1½)		NA

ELEV 559	TDZE 559
----------	----------

The diagram shows RWY 9 with a length of 3000 x 60 feet and a 0.4% UP slope. The approach path is shown at 088°. A missed approach path is also indicated.