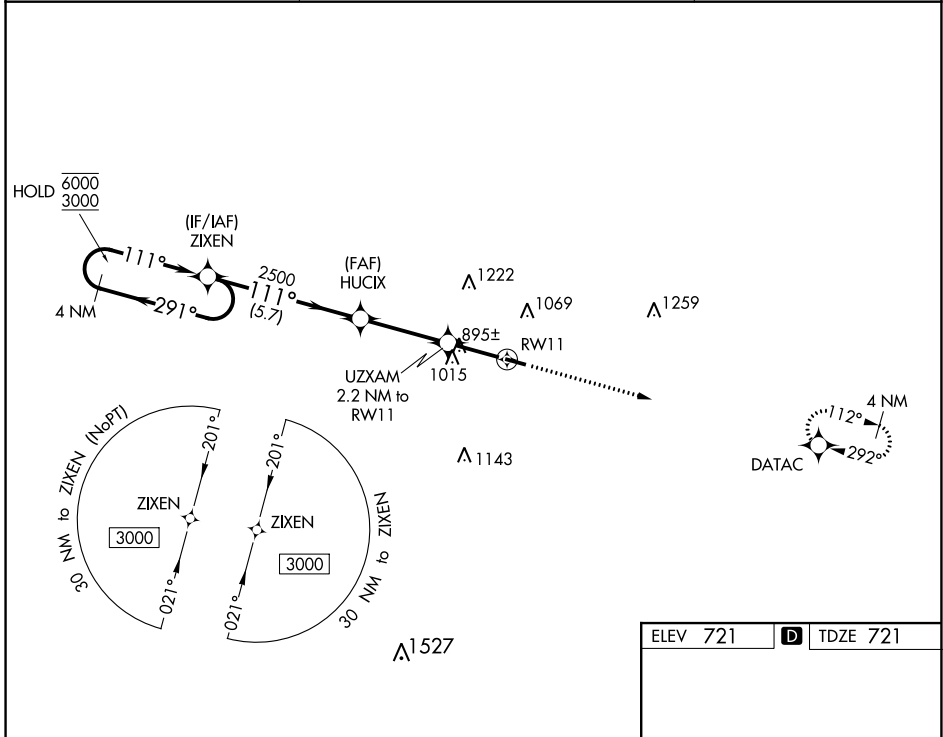


WAAS CH <b>62837</b> <b>W11A</b>	APP CRS <b>111°</b>	Rwy ldg TDZE <b>721</b> Apt Elev <b>721</b>	<b>3850</b>
----------------------------------------	------------------------	---------------------------------------------------	-------------

# RNAV (GPS) RWY 11

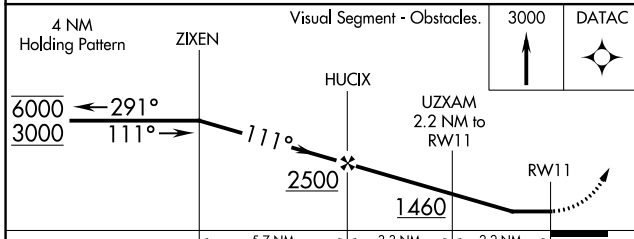
CYNTHIANA-HARRISON COUNTY (Ø18)

RNP APCH.		MISSED APPROACH: Climb to 3000 direct DATAC and hold.
27K AWOS-3 <b>119.975</b>	LEXINGTON APP CON <b>120.15 259.3</b> (040°-220°) <b>120.75 298.9</b> (221°-039°)	UNICOM <b>122.8</b> (CTAF) <b>Ø</b>

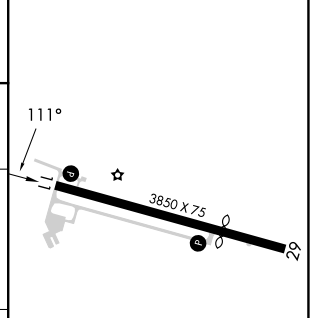


SE-1, 22 FEB 2024 to 21 MAR 2024

SE-1, 22 FEB 2024 to 21 MAR 2024



ELEV 721	<b>D</b> TDZE 721
----------	-------------------



CATEGORY	A	B	C	D
LP MDA	1220-1	499 (500-1)		NA
LNAV MDA	1300-1	579 (600-1)		NA
<b>C</b> CIRCLING	1340-1 619 (700-1)	1560-1¼ 839 (900-1¼)		NA

MIRL Rwy 11-29 **Ø**  
REIL Rwy 11 and 29 **Ø**