

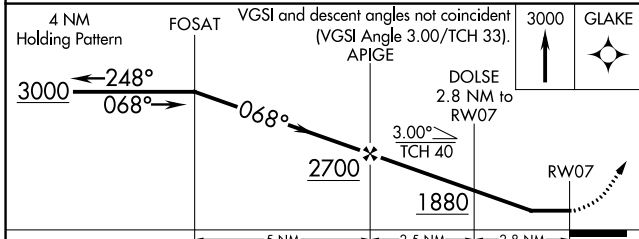
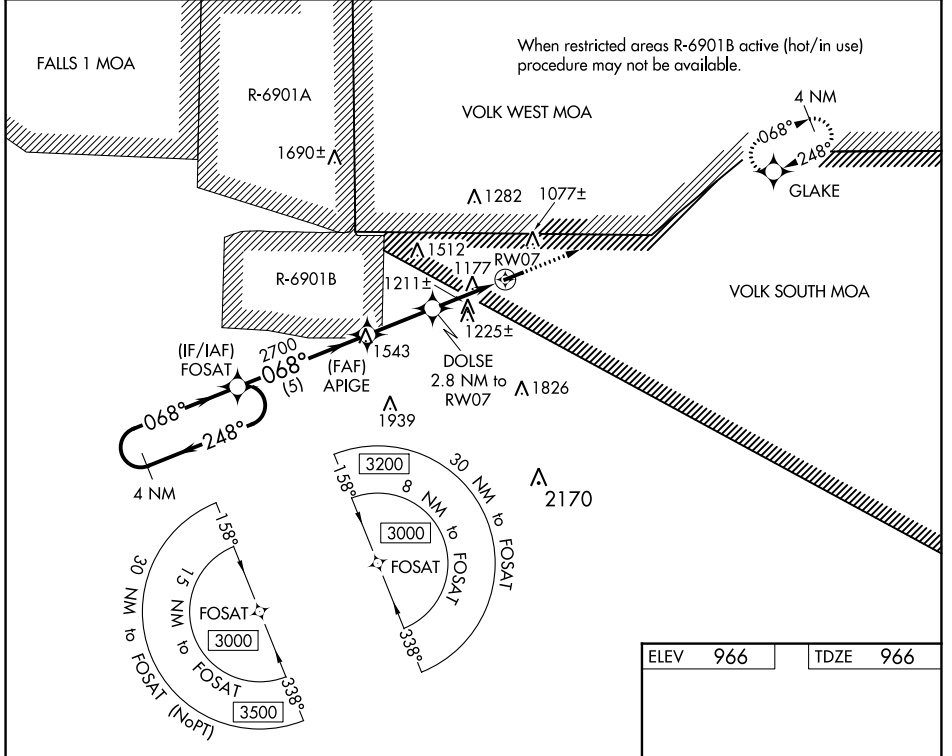
WAAS CH 97737 W07A	APP CRS 068°	Rwy Idg TDZE Apt Elev	3900 966 966
--	------------------------	-----------------------------	---

RNAV (GPS) RWY 7

BLOYER FLD (Y72)

NA DME/DME RNP-0.3 NA. Use Camp Douglas altimeter setting; when not received, use Sparta/Fort McCoy altimeter setting and increase all MDA 20 feet, increase LNAV Cat C visibility 1/8 mile. Helicopter visibility reduction below 1 SM NA. Procedure NA at night. **MISSED APPROACH:** Climb to 3000 direct GLAKE and hold.

VOLK APP CON ★ 135.25 244.875	VOLK CTAF 127.5	CTAF 122.9
---	---------------------------	----------------------



ELEV 966	TDZE 966
----------	----------

The diagram shows the final approach to RWY 07. The glide slope is 3900 x 75. The final descent is at 068° heading. The runway is RWY 07. A note indicates: "MIRL Rwy 7-25, REIL Rwy 7 and 25".

CATEGORY	A	B	C	D
LP MDA	1460-1	494 (500-1)	1460-1 3/8 494 (500-1 3/8)	NA
LNAV MDA	1500-1	534 (600-1)	1500-1 1/2 534 (600-1 1/2)	NA
C CIRCLING	1540-1 574 (600-1)	1560-1 594 (600-1)	1660-2 694 (700-2)	NA

EC-3, 22 FEB 2024 to 21 MAR 2024

EC-3, 22 FEB 2024 to 21 MAR 2024