

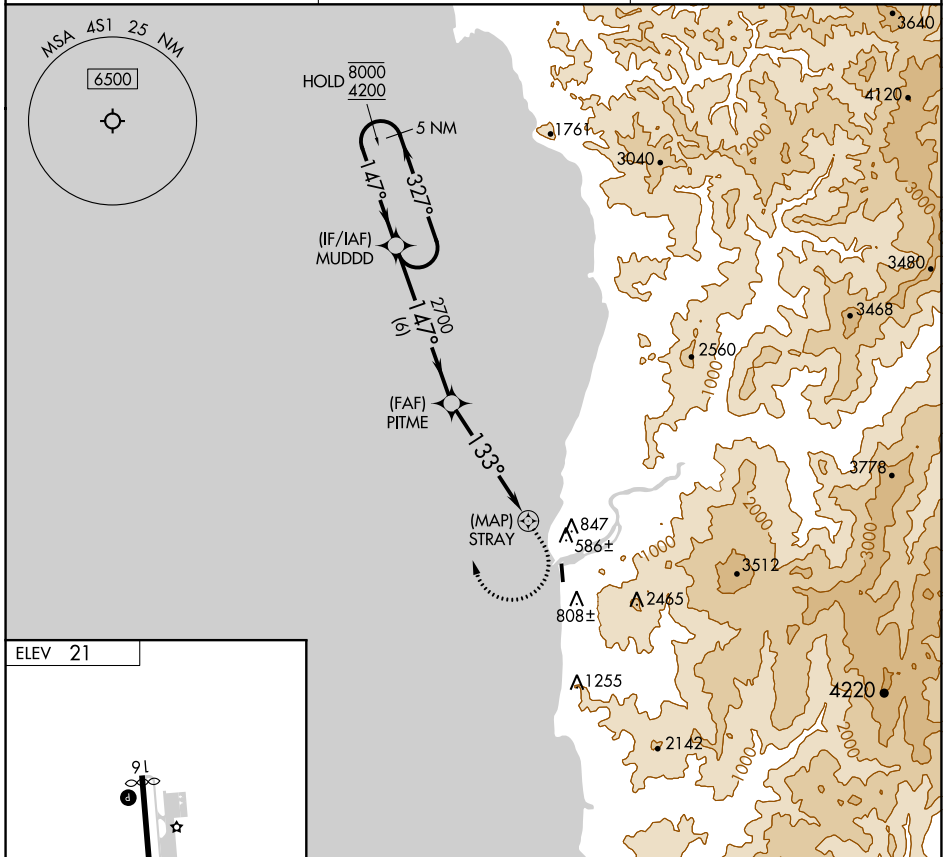
APP CRS	Rwy Idg	N/A
133°	TDZE	N/A
	Apt Elev	21

# RNAV (GPS)-A

GOLD BEACH MUNI (4S1)

RNP APCH-GPS.	MISSED APPROACH: Climb to 2100 then climbing right turn to 4200 direct MUDDD and hold.
<p>▼ Circling NA east of Rwy 16-34.</p> <p>▲ Procedure NA at night.</p>	

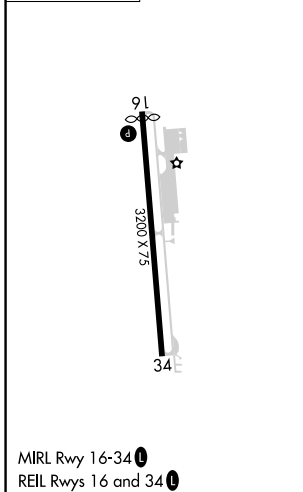
AWOS-3 <b>118.15</b>	SEATTLE CENTER <b>127.55 254.35</b>	UNICOM <b>122.8 (CTAF) 0</b>
-------------------------	--	---------------------------------



NW-1, 22 FEB 2024 to 21 MAR 2024

NW-1, 22 FEB 2024 to 21 MAR 2024

ELEV 21
---------



	MUDDD	2100	4200	MUDDD
	5 NM Holding Pattern	↑	↷	✦
	8000 ← 327°			
	4200 → 147°			
			PITME	
			2700	
			↘ 133°	
				STRAY
			6 NM	5 NM
CATEGORY	A	B	C	D
CIRCLING	1740-2½	1719 (1800-2½)	1740-3	NA
			1719 (1800-3)	