

DEL RIO, TEXAS

HI-ILS or LOC/DME Z RWY 13C

LOC I-DFL **110.3**
APCH CRS **128°**

Rwy Idg **8852 8316 6571**
TDZE **1082 1078 1077**
Arprt Elev **1082**

AL-111 [USAF]

LAUGHLIN AFB (KDLF)

▽ * When ALS inop, increase RVR to 40 and vis to 3/4 mile.
** When ALS inop, increase CAT AB RVR to 55 and vis to 1 mile, CAT CDE RVR to 50 and vis to 1 mile.
*** Circling W of Rwy 13R-31L not authorized.



MISSED APPROACH: Climb to 3000 on DLF VORTAC R-131 to 8.1 DME (ZETEL), then turn left to intercept DLF R-113 to 12 DME (NUCCI) and hold.

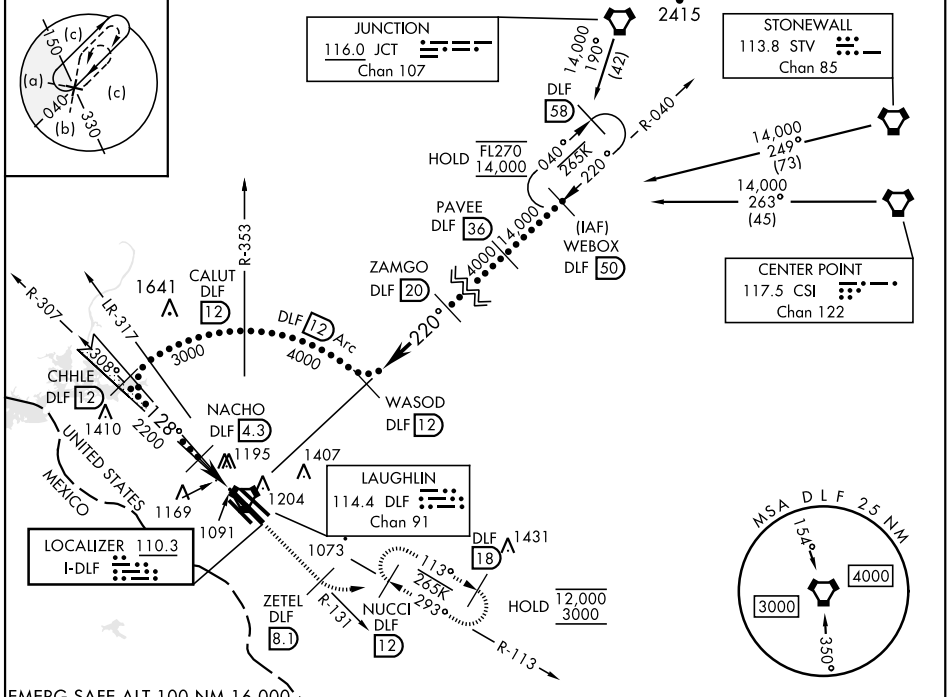
ATIS **★**
114.4 269.9

DEL RIO APP CON
119.6 259.1

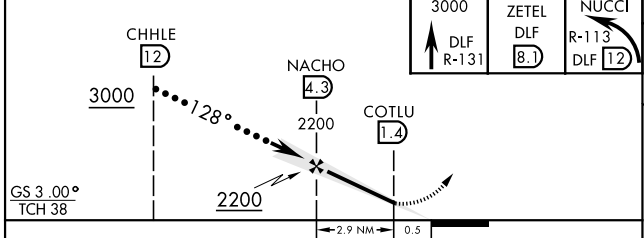
TOWER **★**
125.2 307.375

GND CON
275.8

CLNC DEL
120.5 335.8

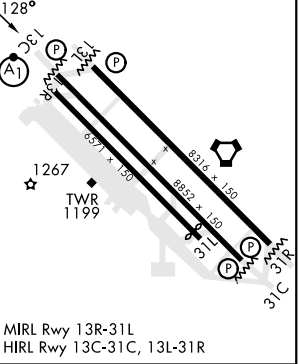


EMERG SAFE ALT 100 NM 16,000



| | |
|-------------------|---------------|
| ELEV 1082 | TDZE 13C 1082 |
| | TDZE 13L 1078 |
| | TDZE 13R 1077 |
| Rwy 31L Idg 6282' | |

| | | | | | |
|-----------------|-----------------------|-----------------------|-------------------------------|-----------------------|------------------------------|
| GS 3.00° TCH 38 | | | | | |
| CATEGORY | A | B | C | D | E |
| S-ILS 13C * | 1282/24 | | 200 | (200-1/2) | |
| S-LOC 13C ** | 1420/24 | 338 (400-1/2) | 1420/26 | 338 | (400-1/2) |
| SIDESTEP 13L | 1440-1 | 362 (400-1) | 1440-1 1/2 362 (400-1 1/2) | 1440-2 | 362 (400-2) |
| SIDESTEP 13R | 1480-1 | 403 (400-1) | 1480-1 1/2 403 (400-1 1/2) | 1480-2 | 403 (400-2) |
| CIRCLING *** | 1500-1 418 (500-1) | 1540-1 458 (500-1) | 1700-1 1/4 618(700-1 1/4) | 1700-2 618 (700-2) | 1740-2 1/4 658(700-2 1/4) |



DEL RIO, TEXAS
Amdt 6 07SEP23

29°22'N-100°47'W

LAUGHLIN AFB (KDLF)

HI-ILS or LOC/DME Z RWY 13C

SC-3, 18 APR 2024 to 16 MAY 2024

SC-3, 18 APR 2024 to 16 MAY 2024