

DEL RIO, TEXAS

HI-ILS or LOC/DME Z RWY 31C

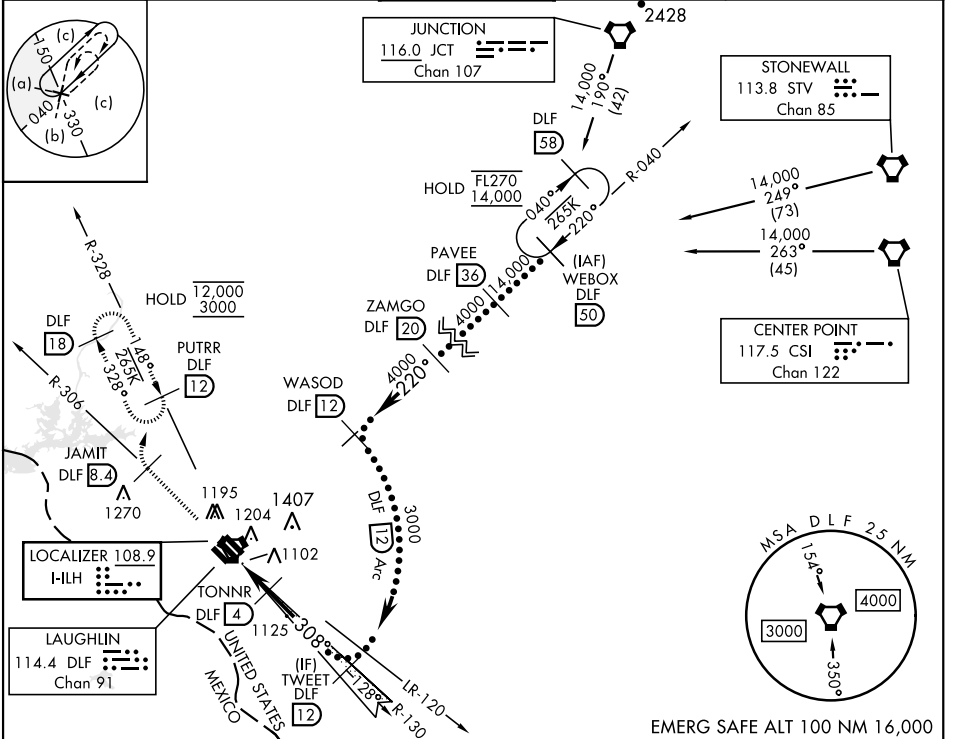
LOC HI-LH 108.9	APCH CRS 308°	Rwy Idg 8852 6282 8316	31C 1079	31L 1080	31R 1078
		TDZE 1082	Arprt Elev 1082		

AL-111 [USAF]

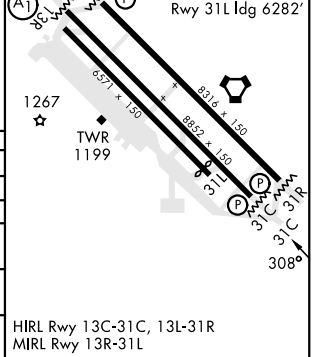
LAUGHLIN AFB (KDLF)

* Circling not authorized in sector SW of Rwy 13R-31L. MISSED APPROACH: Climb to 3000 on DLF VORTAC R-306 to 8.4 DME (JAMIT), then turn right to intercept DLF R-328 to 12 DME (PUTRR) and hold.

ATIS ★ 114.4 269.9	DEL RIO APP CON 119.6 259.1	TOWER ★ 125.2 307.375	GND CON 275.8	CLNC DEL 120.5 335.8
------------------------------	---------------------------------------	---------------------------------	-------------------------	--------------------------------



ELEV 1082	TDZE 31C 1079
	TDZE 31L 1080
	TDZE 31R 1078
Rwy 31L Idg 6282'	



CATEGORY	A	B	C	D	E
S-ILS 31C	1279-3/4		200 (200-3/4)		
S-LOC 31C	1360-1	281 (300-1)	1360-7/8		281 (300-7/8)
SIDESTEP 31L	1360-1	280 (300-1)	1360-1 1/2 280 (300-1 1/2)	1360-2	280 (300-2)
SIDESTEP 31R	1380-1	302 (300-1)	1380-1 1/2 302 (300-1 1/2)	1380-2	302 (300-2)
CIRCLING*	1500-1 418 (500-1)	1540-1 458 (500-1)	1700-1 1/4 618 (700-1 1/4)	1700-2 618 (700-2)	1740-2 1/4 658 (700-2 1/4)

DEL RIO, TEXAS
Amdt 6 05OCT23

LAUGHLIN AFB (KDLF)

HI-ILS or LOC/DME Z RWY 31C

29°22'N-100°47'W

SC-3, 18 APR 2024 to 16 MAY 2024

SC-3, 18 APR 2024 to 16 MAY 2024