

HINKO ONE DEPARTURE (HINKO1•HINKO)

LAUGHLIN AFB (KDLF)

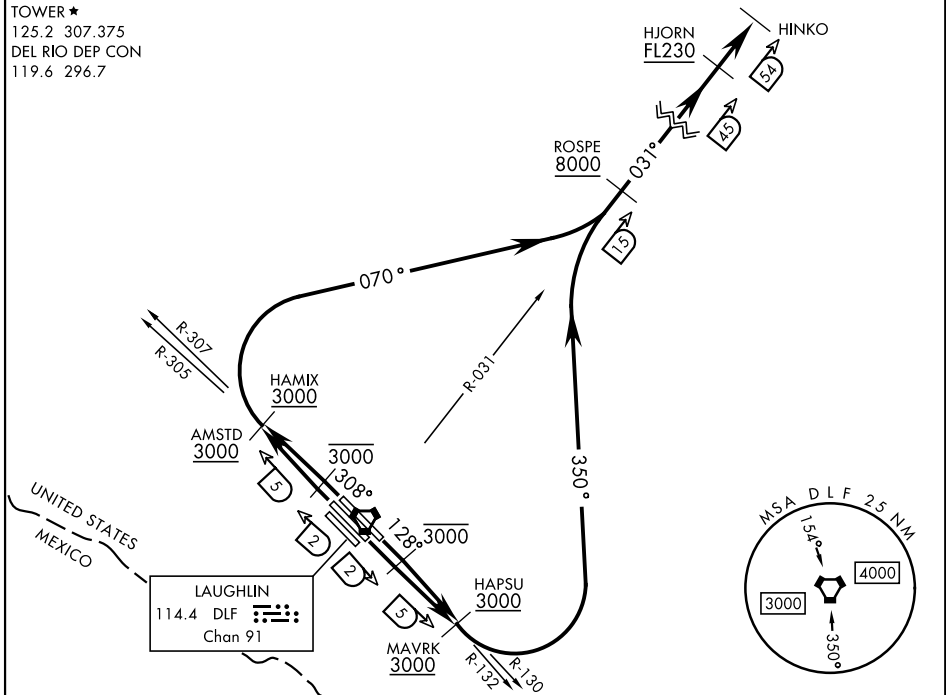
AL-111 [USAF]

DEL RIO, TEXAS

ATIS ★ 114.4 269.9
 CLNC DEL 2216
 120.5 335.8
 GND CON 275.8
 TOWER ★
 125.2 307.375
 DEL RIO DEP CON
 119.6 296.7

Rwy	Knots	60	120	180	240	300	360
13C/L	V/V(fpm)	450	900	1340	1790	2230	2680
31C/R	V/V(fpm)	460	920	1380	1840	2300	2760

ATC Climb Rate to HJORN FL230



DEPARTURE ROUTE DESCRIPTION

TAKEOFF RWY 13C: Climb on track 128°, intercept the DLF VORTAC R-132 to DLF 5 DME (MAVRK), cross DLF VORTAC 2 DME at or below 3000, cross DLF R-132/5 DME (MAVRK) at or above 3000. Then turn left and track 350° to intercept the DLF R-031 prior to ROSPE, cross ROSPE at or above 8000, cross HJORN at or above FL230, then direct HINKO.

TAKEOFF RWY 13L: Climb on track 128°, intercept the DLF VORTAC R-130 to DLF 5 DME (HAPSU), cross DLF VORTAC 2 DME at or below 3000, cross DLF R-130/5 DME (HAPSU) at or above 3000. Then turn left and track 350° to intercept the DLF R-031 prior to ROSPE, cross ROSPE at or above 8000, cross HJORN at or above FL230, then direct HINKO.

TAKEOFF RWY 31C: Climb on track 308°, intercept the DLF VORTAC R-305 to DLF 5 DME (AMSTD), cross DLF VORTAC 2 DME at or below 3000, cross DLF R-305/5 DME (AMSTD) at or above 3000. Then turn right and track 070° to intercept the DLF R-031 prior to ROSPE, cross ROSPE at or above 8000, cross HJORN at or above FL230, then direct HINKO.

TAKEOFF RWY 31R: Climb on track 308°, intercept the DLF VORTAC R-307 to DLF 5 DME (HAMIX), cross DLF VORTAC 2 DME at or below 3000, cross DLF R-307/5 DME (HAMIX) at or above 3000. Then turn right and track 070° to intercept the DLF R-031 prior to ROSPE, cross ROSPE at or above 8000, cross HJORN at or above FL230, then direct HINKO.

HINKO ONE DEPARTURE (HINKO1•HINKO)

DEL RIO, TEXAS

LAUGHLIN AFB (KDLF)