

RNAV (GPS) RWY 31C

APCH CRS 308°	Rwy Idg 8852 6282 8316	31C	31L	31R
	TDZE 1079 1080 1078			
	Arprt Elev 1082			

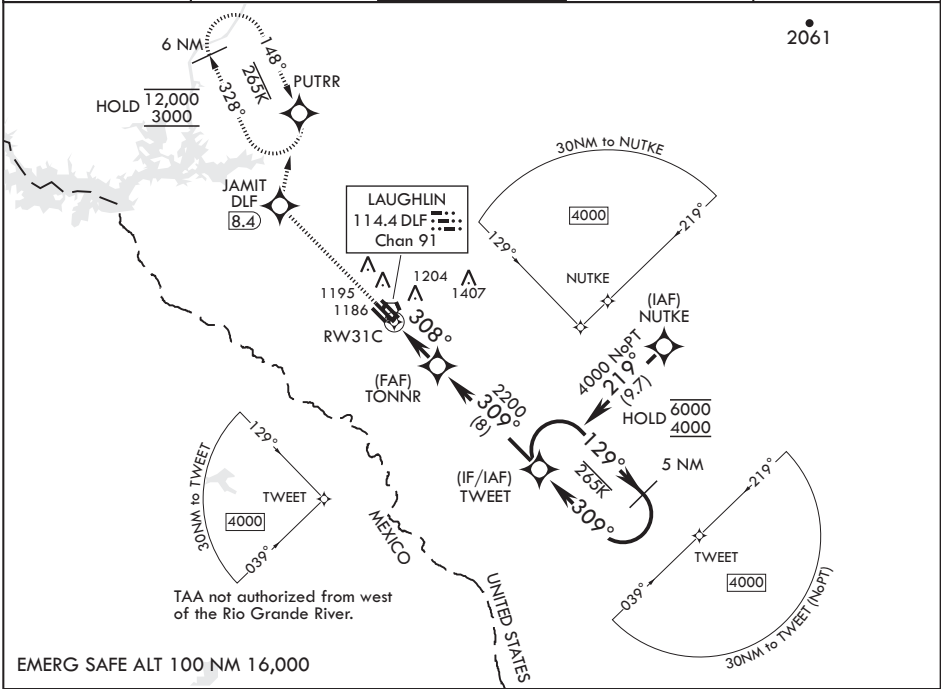
AL-111 (USAF)

LAUGHLIN AFB (KDLF)

RNP APCH - GPS MISSED APPROACH: Climb to 3000 direct JAMIT, then track 005° to PUTRR and hold.

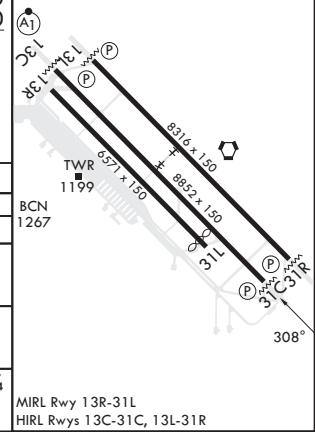
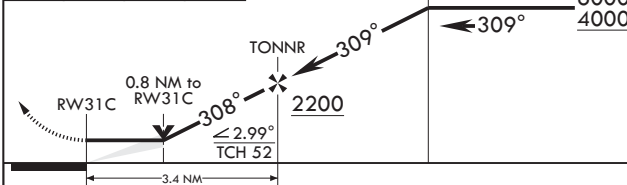
⚠ *Circling not authorized SW of Rwy 13R-31L.

ATIS* 114.4 269.9	DEL RIO APP CON 119.6 259.1	TOWER* 125.2 307.375	GND CON 275.8	CLNC DEL 120.5 335.8
-----------------------------	---------------------------------------	--------------------------------	-------------------------	--------------------------------



EMERG SAFE ALT 100 NM 16,000

3000	JAMIT	tr 005°	PUTRR	ELEV 1082	TDZE 31C 1079
				Rwy 31L Idg 6282'	TDZE 31L 1080
					TDZE 31R 1078



CATEGORY	A	B	C	D	E
LNAV MDA	1380-1 301 (300-1)		1380-7/8 301 (300-7/8)		
SIDESTEP31R	1380-1 302 (300-1)		1380-1½ 302 (300-1½)	1380-2 302 (300-2)	
SIDESTEP31L	1420-1 340 (400-1)		1420-1½ 340 (400-1½)	1420-2 340 (400-2)	
C CIRCLING*	1500-1 418 (500-1)	1540-1 458 (500-1)	1700-1¾ 618 (700-1¾)	1700-2 618 (700-2)	1740-2¼ 658 (700-2¼)

RNAV (GPS) RWY 31C

SC-3, 18 APR 2024 to 16 MAY 2024

SC-3, 18 APR 2024 to 16 MAY 2024