

DEL RIO, TEXAS

RNAV (GPS) B

APCH CRS 340°	Rwy Idg TDZE Arprt Elev	N/A N/A 1082
-------------------------	-------------------------------	---------------------------

AL-111 (USAF)

LAUGHLIN AFB (KDLF)

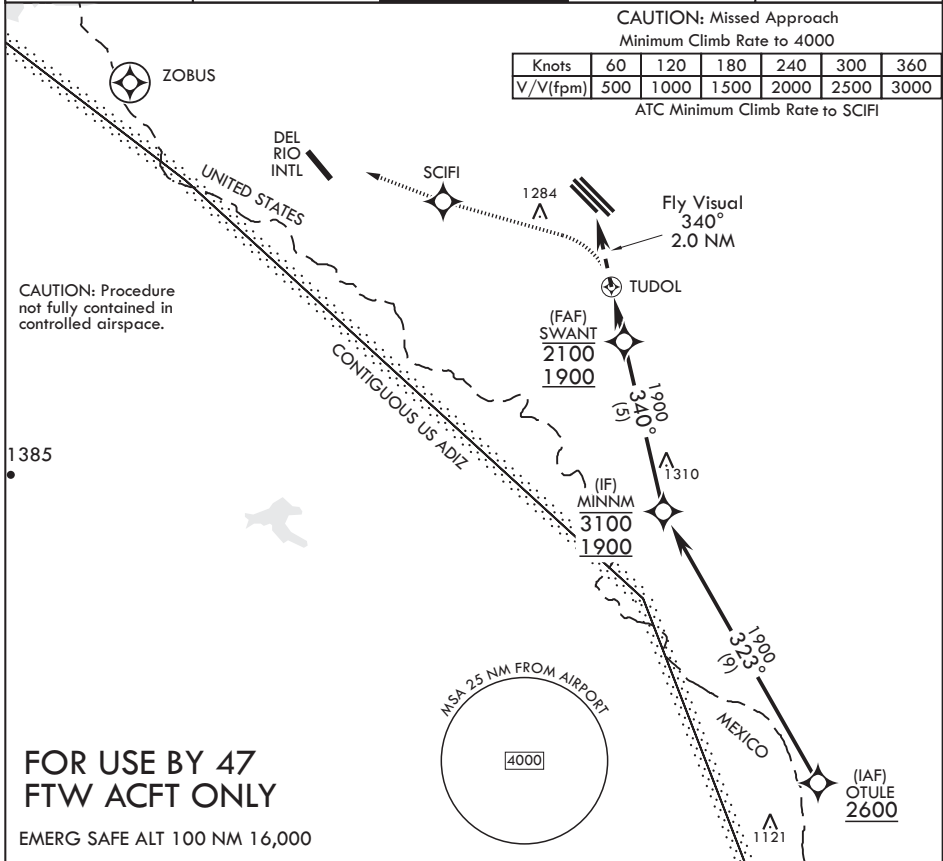
RNP APCH - GPS	MISSED APPROACH: Climbing left turn to 4000 direct ZOBUS, cross SCIFI at 4000, expect radar vectors.
RADAR required	
* Circling not authorized in sector NE of Rwy 13R-31L.	

ATIS ★ 114.4 269.9	DEL RIO APP CON 119.6 259.1	TOWER ★ 125.2 307.375	GND CON 275.8	CLNC DEL 120.5 335.8
------------------------------	---------------------------------------	---------------------------------	-------------------------	--------------------------------

CAUTION: Missed Approach
Minimum Climb Rate to 4000

Knots	60	120	180	240	300	360
V/V(fpm)	500	1000	1500	2000	2500	3000

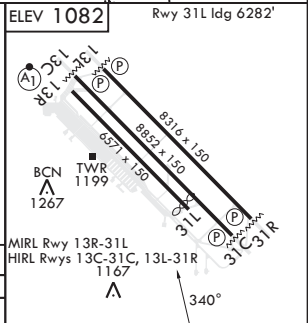
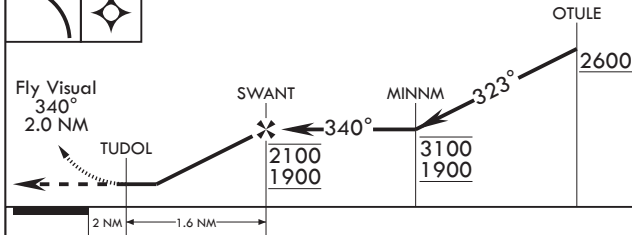
ATC Minimum Climb Rate to SCIFI



CAUTION: Procedure not fully contained in controlled airspace.

FOR USE BY 47 FTW ACFT ONLY

EMERG SAFE ALT 100 NM 16,000



CATEGORY	A	B	C	D
CIRCLING*	1600-3	518	(1000-3)	NA

DEL RIO, TEXAS

29°22'N - 100°47'W

LAUGHLIN AFB (KDLF)

Amdt 6 07SEP23

RNAV (GPS) B

SC-3, 18 APR 2024 to 16 MAY 2024

SC-3, 18 APR 2024 to 16 MAY 2024