


| | | |
|---------------------------|------------------------|------------------------|
| LOC I-ELM 109.1 | APP CRS 242° | Rwy ldg 7799 |
| | | TDZE 955 |
| | | Apt Elev 955 |

ILS or LOC RWY 24

ELMIRA/CORNING RGNL (ELM)

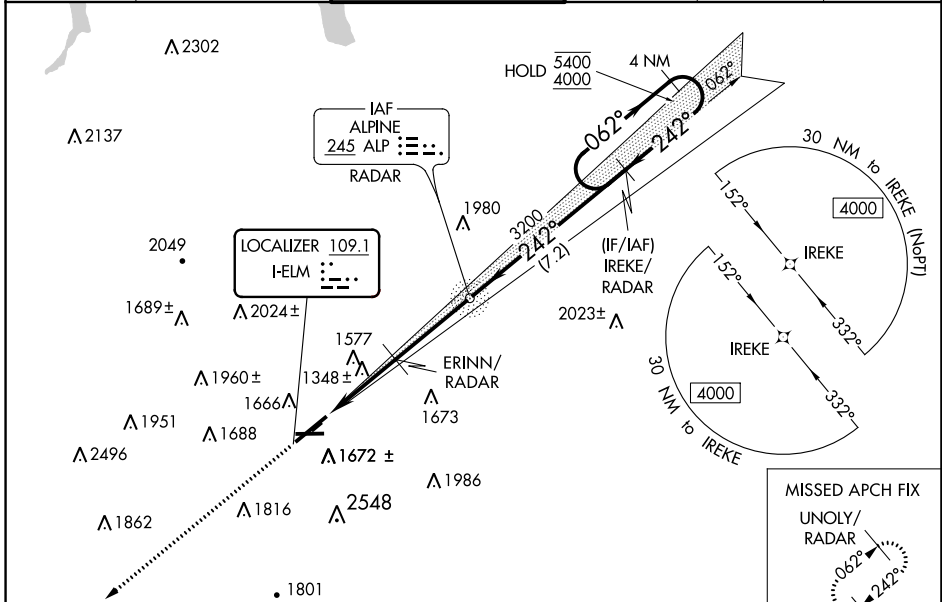
RADAR required to define ERINN. RNAV 1-GPS required from MAP to UNOLY.
RNAV-1 GPS required for procedure entry. ADF or RADAR required.

MALSR


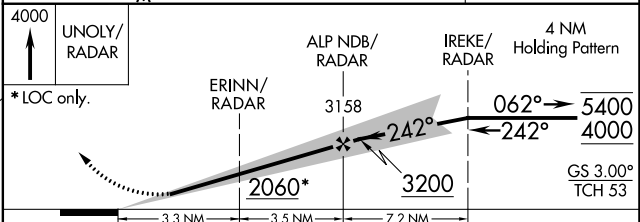
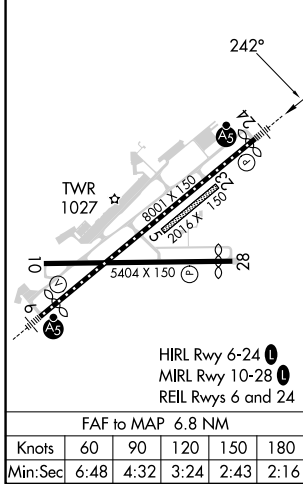
MISSED APPROACH:
Climb to 4000 direct UNOLY/RADAR and hold.
** Missed approach requires minimum climb of 260 feet per NM to 2400.

⚠ Circling NA for Cat D south of Rwy 10 and 28. Inop table does not apply to S-LOC 24 Cats C/D. Circling NA to Rwys 5 and 23. Circling Rwy 10 NA at night.
⚠ For inop ALS increase S-ILS 24 all Cats visibility to RVR 6000.
⚠ -22°C
⚠ **S-ILS 24 RVR 1800 authorized with use of FD or AP or HUD to DA.

| | | | | | |
|------------------------|--|---|-------------------------|--------------------------|-------------------------|
| ATIS 125.475 | ELMIRA APP CON * 128.425 257.8 | ELMIRA TOWER * 121.1 (CTAF) 0 257.8 | GND CON 121.9 | CLNC DEL 121.9 | UNICOM 122.95 |
|------------------------|--|---|-------------------------|--------------------------|-------------------------|



| | | |
|----------|----------|----------|
| ELEV 955 | D | TDZE 955 |
|----------|----------|----------|



| CATEGORY | A | B | C | D |
|--------------------|---------------------------|---------------------------|-------------------------|-------------------------|
| S-ILS 24 ** | | 1155/24 | 200 (200-½) | |
| S-ILS 24 | | 1340/35 | 385 (400-¾) | |
| S-LOC 24 | 2060/40 1105 (1200-¾) | 2060/55 1105 (1200-1) | 2060-3 | 1105 (1200-3) |
| C CIRCLING | 2060-1¼ 1105 (1200-1¼) | 2080-1½ 1125 (1200-1½) | 2100-3 1145 (1200-3) | 2340-3 1385 (1400-3) |
| ERINN FIX MINIMUMS | | | | |
| S-LOC 24 | 1600/24 | 645 (700-½) | 1600-1¾ | 645 (700-1¾) |
| C CIRCLING | 2020-1¼ 1065 (1100-1¼) | 2080-1½ 1125 (1200-1½) | 2100-3 1145 (1200-3) | 2340-3 1385 (1400-3) |

NE-2, 18 APR 2024 to 16 MAY 2024

NE-2, 18 APR 2024 to 16 MAY 2024