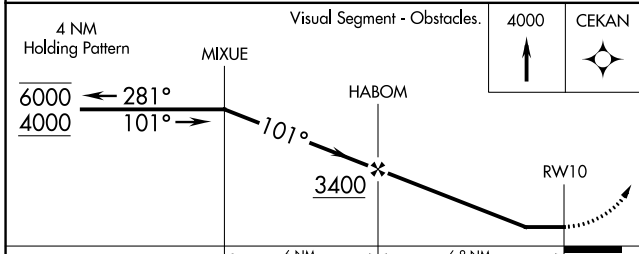
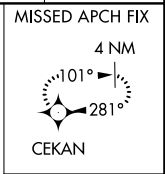
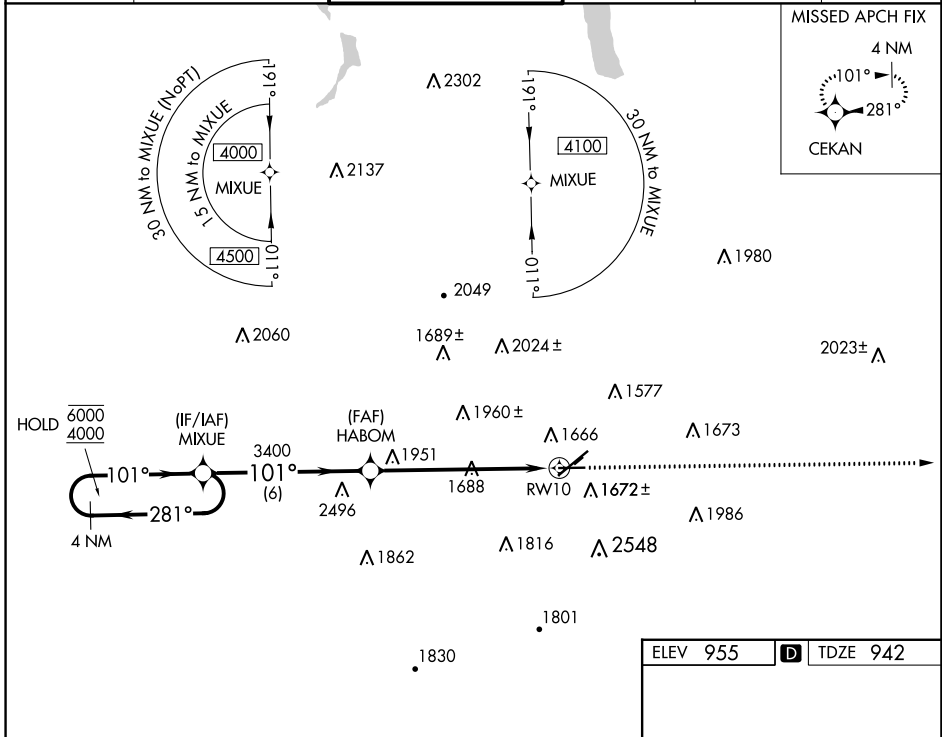


WAAS CH 70530 W10A	APP CRS 101°	Rwy Idg TDZE 942 Apt Elev 955	5004
--	------------------------	---	-------------

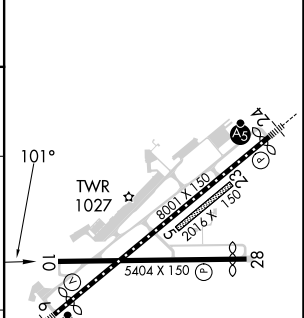
RNAV (GPS) RWY 10

ELMIRA/CORNING RGNL (ELM)

RNP APCH.		<p>⚠ Circling NA to Rwys 5 and 23. Procedure NA at night. Rwy 10 helicopter visibility reduction below 1 SM NA. Circling NA for Cat D south of Rwys 10 and 28.</p>		MISSED APPROACH: Climb to 4000 direct CEKAN and hold.	
ATIS 125.475	ELMIRA APP CON ★ 128.425 257.8	ELMIRA TOWER ★ 121.1 (CTAF) 0 257.8	GND CON 121.9	CLNC DEL 121.9	UNICOM 122.95



ELEV 955	D TDZE 942
----------	-------------------



CATEGORY	A	B	C	D
LP MDA	2280-1¼ 1338 (1400-1¼)	2280-1½ 1338 (1400-1½)	2280-3	1338 (1400-3)
LNAV MDA	2280-1¼ 1338 (1400-1¼)	2280-1½ 1338 (1400-1½)	2280-3	1338 (1400-3)
C CIRCLING	2280-1¼ 1325 (1400-1¼)	2280-1½ 1325 (1400-1½)	2280-3 1325 (1400-3)	2340-3 1385 (1400-3)

HIRL Rwy 6-24 **0**
 MIRL Rwy 10-28 **0**
 REIL Rwys 6 and 24

NE-2, 18 APR 2024 to 16 MAY 2024

NE-2, 18 APR 2024 to 16 MAY 2024