

WAAS CH 99527 W24A	APP CRS 242°	Rwy Idg TDZE Apt Elev	7799 955 955
--	------------------------	-----------------------------	---

RNAV (GPS) RWY 24

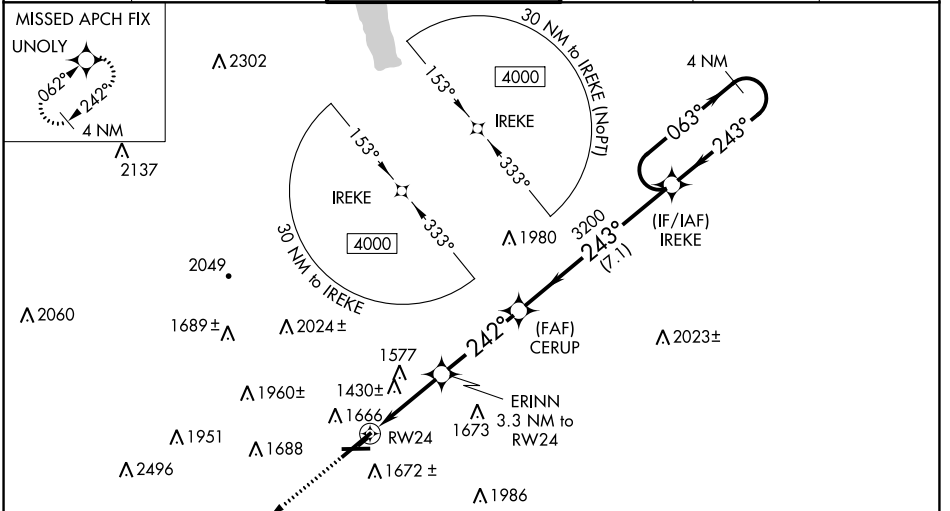
ELMIRA/CORNING RGNL (ELM)

⚠ Circling Rwy 10 NA at night. Circling NA for Cat D south of Rwy 10-28. Circling NA to Rwy 5 and 23. DME/DME RNP-0.3 NA. For uncompensated Baro-VNAV systems, LNAV/VNAV NA below -20°C (-4°F) or above 54°C (130°F). When local altimeter setting not received, use Penn Yan altimeter setting and increase all DA 73 feet and all MDA 80, and increase LPV all Cats and LNAV Cats C/D visibility ¼ mile and LNAV/VNAV all Cats visibility 1½ mile; inop table does not apply to LNAV/VNAV all Cats; for inop MALS, increase LPV DA** all Cats visibility to ¾ and LPV all Cats visibility to 1½. Baro-VNAV and VDP NA when using Penn Yan altimeter setting. For inop MALS, increase LNAV Cats C/D visibility to 2½ mile. **Missed approach requires a minimum climb of 260 feet per NM to 2300. **RVR 1800 authorized with use of FD or AP or HUD to DA, NA when using Penn Yan altimeter setting.

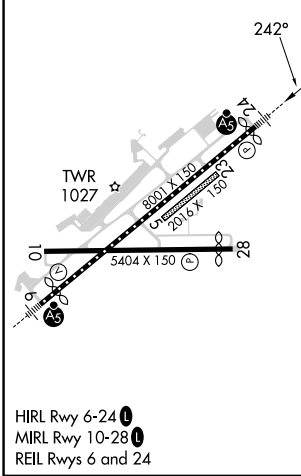
MALS

MISSED APPROACH:
Climb to 4000 direct UNOLY and hold.

ATIS 125.475	ELMIRA APP CON * 128.425 257.8	ELMIRA TOWER * 121.1 (CTAF) 0 257.8	GND CON 121.9	CLNC DEL 121.9	UNICOM 122.95
------------------------	--	---	-------------------------	--------------------------	-------------------------



ELEV 955	D	TDZE 955
----------	----------	----------



CATEGORY	A	B	C	D
LPV DA**		1155/24	200 (200-½)	
LPV DA		1348/45	393 (400-¾)	
LNAV/VNAV DA		1807-2½	852 (900-2½)	
LNAV MDA	1740/24 785 (800-½)	1740/40 785 (800-¾)	1740-1¾	785 (800-1¾)
CIRCLING	2100-1¼ 1145 (1200-1¼)	2100-1½ 1145 (1200-1½)	2120-3 1165 (1200-3)	2340-3 1385 (1400-3)

NE-2, 18 APR 2024 to 16 MAY 2024

NE-2, 18 APR 2024 to 16 MAY 2024