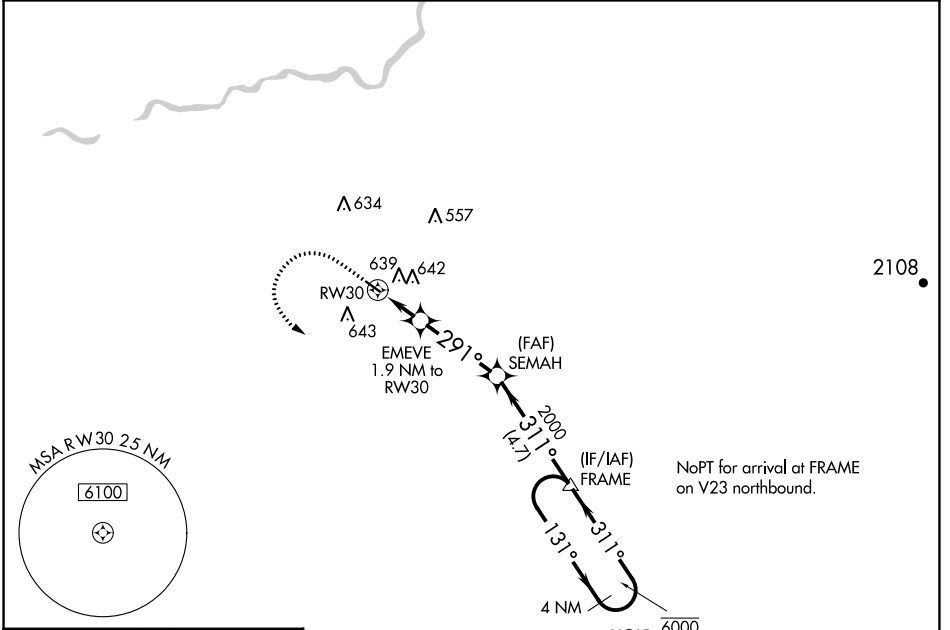


APP CRS	Rwy Idg	3089
291°	TDZE	280
	Apt Elev	280

RNAV (GPS) RWY 30

FRESNO CHANDLER EXEC (FCH)

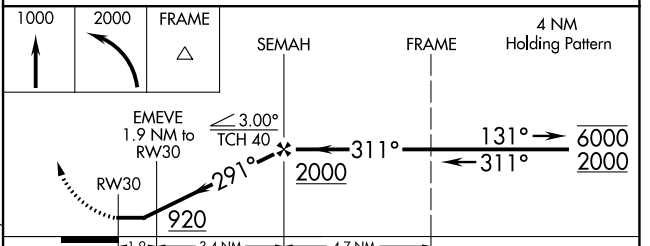
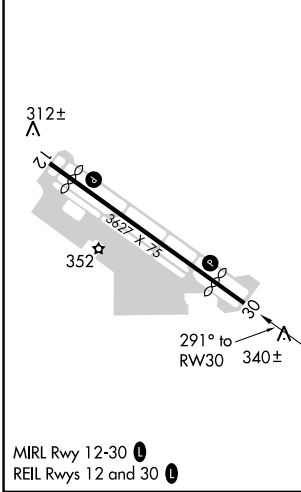
RNP APCH.		MISSED APPROACH: Climb to 1000 then climbing left turn to 2000 direct FRAME and hold.	
<p>▼ Straight-in Rwy 30 NA at night, Circling Rwy 30 NA at night. Rwy 30 helicopter visibility reduction below 1 SM NA.</p>			
AWOS-3	FRESNO APP CON	CLNC DEL	UNICOM
135.225	119.0 323.25	119.0	123.0 (CTAF) ①



SW-2, 18 APR 2024 to 16 MAY 2024

SW-2, 18 APR 2024 to 16 MAY 2024

ELEV 280	TDZE 280
----------	----------



CATEGORY	A	B	C	D
LNVA MDA	800-1	520 (600-1)	800-1 $\frac{3}{8}$ 520 (600-1 $\frac{3}{8}$)	NA
C CIRCLING	960-1	680 (700-1)	960-2 680 (700-2)	NA