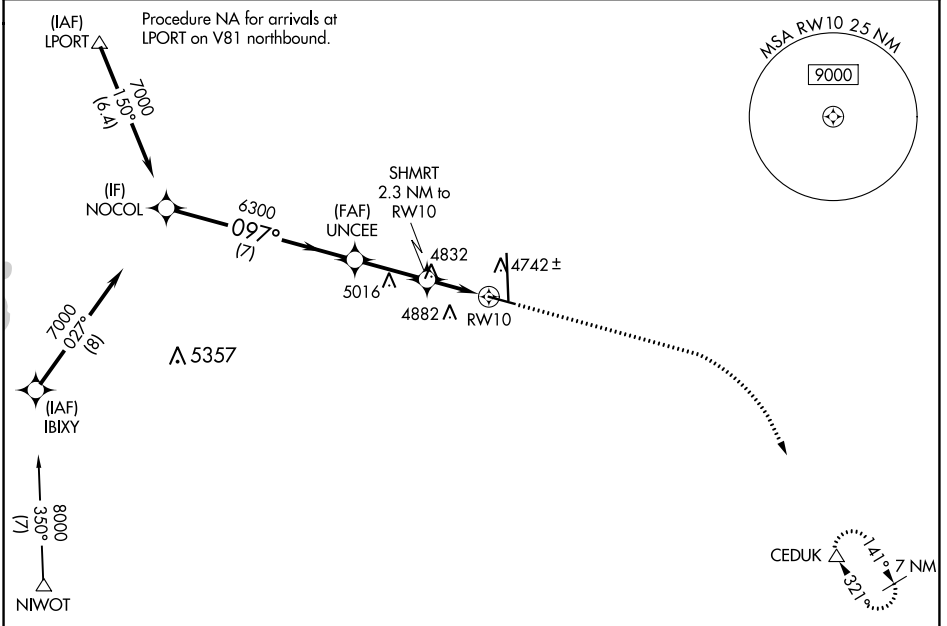


WAAS CH <b>62900</b> <b>W10A</b>	APP CRS <b>097°</b>	Rwy Idg TDZE Apt Elev	<b>5801</b> <b>4661</b> <b>4697</b>
--	------------------------	-----------------------------	---

# RNAV (GPS) RWY 10

GREELEY-WELD COUNTY (GXY)

RNP APCH.		MISSED APPROACH: Climb to 5400 then climbing right turn to 7000 direct CEDUK and hold.	
AWOS-3PT <b>135.175</b>	DENVER APP CON <b>134.85 251.125</b>	CLNC DEL <b>126.65</b>	UNICOM <b>122.8 (CTAF) 0</b>



SW-1, 18 APR 2024 to 16 MAY 2024

SW-1, 18 APR 2024 to 16 MAY 2024

ELEV 4697		TDZE 4661	
VGSi and RNAV glidepath not coincident NOCOL (VGSi Angle 3.00/TCH 43).			
7000 GP 3.00° TCH 50		UNCEE SHMRT 2.3 NM to RW10 *5440 *1.4 NM to RW10 RW10	
7000 097°		5400 7000 CEDUK *LNAV only	
CATEGORY	A	B	C
LPV DA		4911-3/4	250 (300-3/4)
LNAV/VNAV DA		4920-3/4	259 (300-3/4)
LNAV MDA	5140-1	479 (500-1)	5140-1 3/8 479 (500-1 3/8)
CIRCLING	5140-1 443 (500-1)	5200-1 503 (600-1)	5200-1 1/2 503 (600-1 1/2) 5380-2 1/4 683 (700-2 1/4)

