


LOC/DME I-MHR 111.35 Chan 50(Y)	APP CRS 221°	Rwy Idg TDZE Apt Elev 11301 98 98
--	------------------------	---

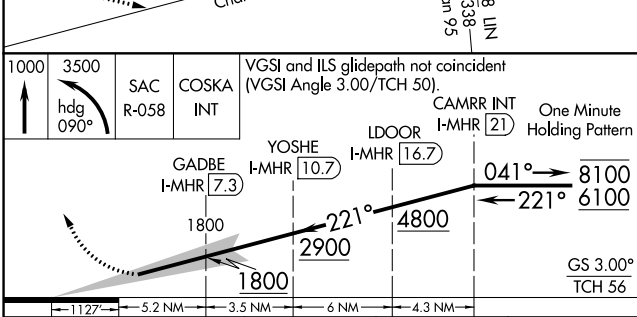
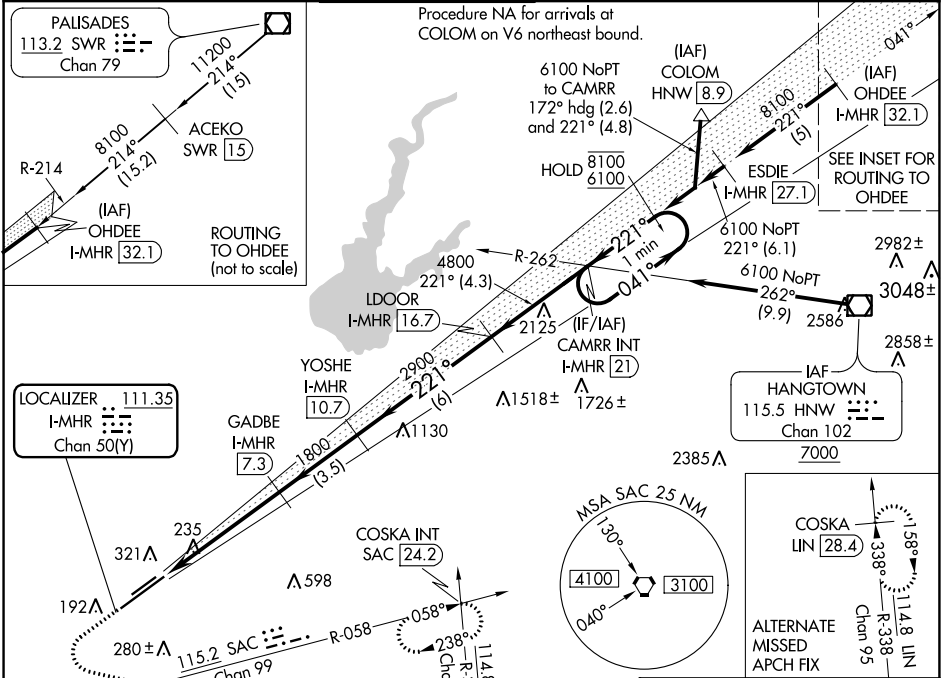
I LS Z RWY 22L (SA CAT I & II)

SACRAMENTO MATHER (MHR)

⚠ Requires specific OPSPEC, MSPEC, or LOA approval.
Procedure NA when tower closed.

MALSR
 MISSED APPROACH: Climb to 1000, then climbing left turn to 3500 on heading 090° and SAC VORTAC R-058 to COSKA INT/SAC 24.2 DME and hold, continue climb-in-hold to 3500.

ATIS 118.325	NORCAL APP CON 127.4 317.5	MATHER TOWER ★ 120.65 (CTAF) 282.25	GND CON 121.85 307.9	CLNC DEL 121.85 307.9	UNICOM 122.95
------------------------	--------------------------------------	---	--------------------------------	---------------------------------	-------------------------





CATEGORY	A	B	C	D
S-ILS 22L	SA CAT I	RA 136/14	150	DA 248
S-ILS 22L	SA CAT II	RA 95/12	100	DA 198

SA CATEGORY I & II ILS - SPECIAL AIRCREW & AIRCRAFT CERTIFICATION REQUIRED

ELEV 98 TDZE 98

TWR 211 ±

MIRL Rwy 4L-22R 

HIRL Rwy 4R-22L 

SW-2, 18 APR 2024 to 16 MAY 2024

SW-2, 18 APR 2024 to 16 MAY 2024