

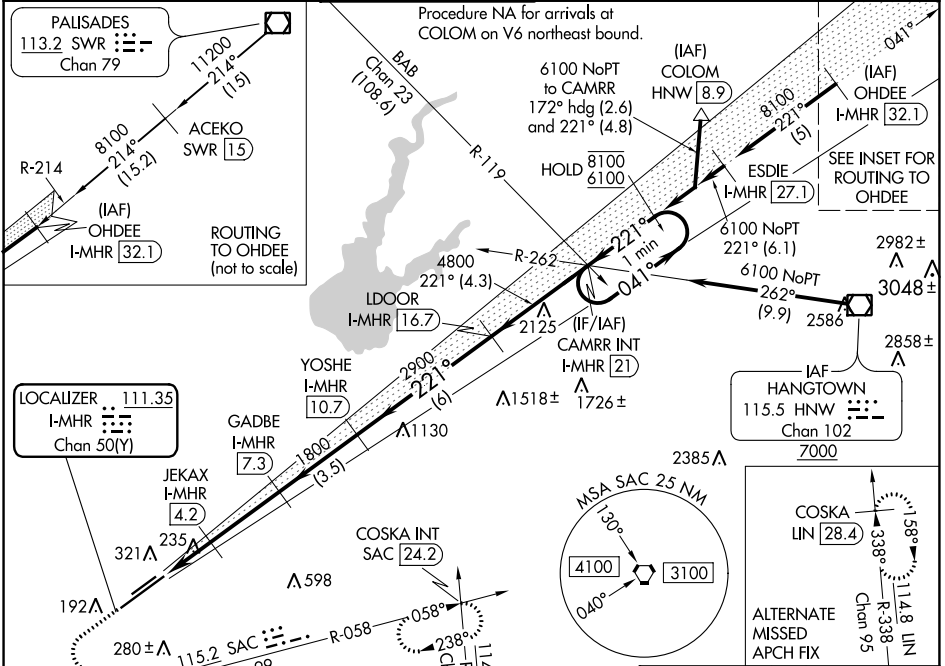
LOC/DME I-MHR <b>111.35</b> Chan 50(Y)	APP CRS <b>221°</b>	Rwy Idg TDZE Apt Elev	<b>11301</b> <b>98</b> <b>98</b>
--	------------------------	-----------------------------	--

# ILS Z or LOC Z RWY 22L

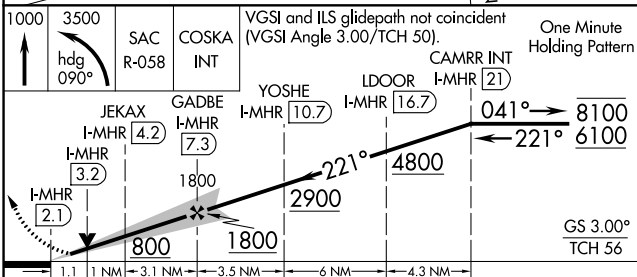
## SACRAMENTO MATHER (MHR)

DME required for LOC only.	MALSR	MISSED APPROACH: Climb to 1000, then climbing left turn to 3500 on heading 090° and SAC VORTAC R-058 to COSKA INT/ SAC 24.2 DME and hold, continue climb-in-hold to 3500.
<p>▼ For inop ALS, increase S-ILS Cat E visibility to RVR 4000 and S-LOC Cat C/D/E visibility to RVR 6000. Circling NA northwest of Rwy 4R-22L.</p> <p>*RVR 1800 authorized with use of FD or AP or HUD to DA (NA when using Sacramento Exec altimeter setting).</p>		

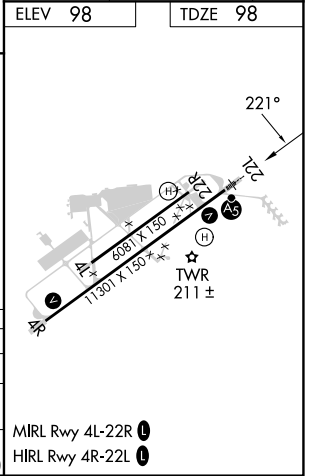
ATIS <b>118.325</b>	NORCAL APP CON <b>127.4 317.5</b>	MATHER TOWER * <b>120.65 (CTAF) 282.25</b>	GND CON <b>121.85 307.9</b>	CLNC DEL <b>121.85 307.9</b>	UNICOM <b>122.95</b>
------------------------	--------------------------------------	---	--------------------------------	---------------------------------	-------------------------



ELEV 98	TDZE 98
---------	---------



CATEGORY	A	B	C	D	E
S-ILS 22L*	298/24 200 (200-½)				
S-LOC 22L	500/24	402 (500-½)	500/40 402 (500-¾)		
CIRCLING	560-1	462 (500-1)	600-1½ 502 (600-1½)	800-2¼ 702 (800-2¼)	800-2½ 702 (800-2½)



SW-2, 18 APR 2024 to 16 MAY 2024

SW-2, 18 APR 2024 to 16 MAY 2024