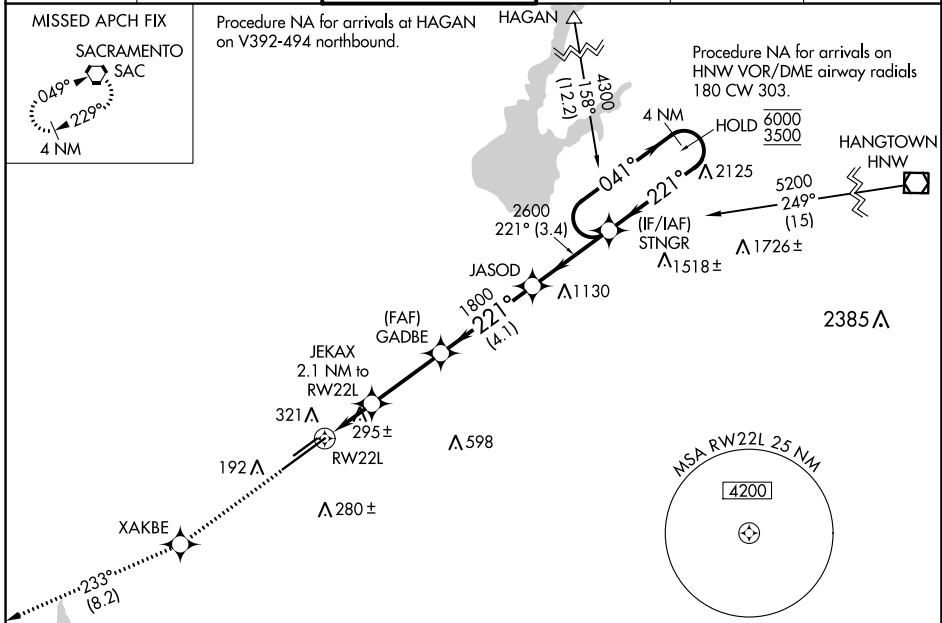


WAAS CH 40225 W22A	APP CRS 221°	Rwy Idg 11301 TDZE 98 Apt Elev 98
--	------------------------	--

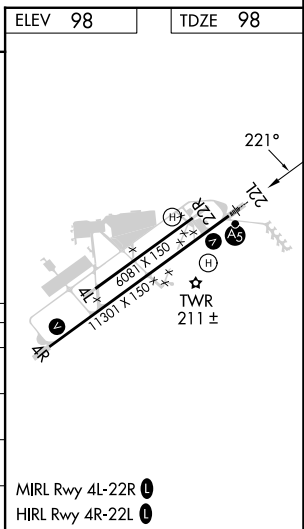
RNAV (GPS) RWY 22L

SACRAMENTO MATHER (MHR)

RNP APCH.		MALSRL	MISSED APPROACH: Climb to 3000 direct XAKBE and on track 233° to SAC VORTAC and hold.		
<p>⚠ Circling NA northwest of Rwy 4R-22L. For uncompensated Baro-VNAV systems, LNAV/VNAV NA below -15°C or above 54°C. For inop ALS, increase LNAV/VNAV all Cats visibility to 1½ SM and LNAV Cat C/D visibility to 1¾ SM.</p>					
ATIS 118.325	NORCAL APP CON 127.4 317.5	MATHER TOWER * 120.65 (CTAF) 282.25	GND CON 121.85 307.9	CLNC DEL 121.85 307.9	UNICOM 122.95



3000	XAKBE	tr 233°	SAC	VGSI and RNAV glidepath not coincident (VGSI Angle 3.00/TCH 50).			
*LNAV only				JASOD	STNGR	4 NM Holding Pattern	
<p>JAKAX 2.1 NM to RW22L</p> <p>*1.4 NM to RW22L</p> <p>800*</p> <p>1800</p> <p>2600</p> <p>1800</p> <p>221°</p> <p>041° → 6000</p> <p>← 221° 3500</p> <p>GP 3.00° TCH 56</p>							
CATEGORY	A	B	C	D			
LPV DA	298-½ 200 (200-½)						
LNAV/VNAV DA	517-¾ 419 (500-¾)						
LNAV MDA	580-½	482 (500-½)	580-1	482 (500-1)			
CIRCLING	580-1	482 (500-1)	600-1½	800-2¼	502 (600-1½)	702 (800-2¼)	



SW-2, 18 APR 2024 to 16 MAY 2024

SW-2, 18 APR 2024 to 16 MAY 2024