

(ARCHZ1.ARCHZ) 18144

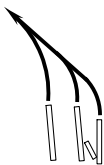
ARCHZ ONE DEPARTURE (RNAV)

AL-365 (FAA)

SALT LAKE CITY INTL (SLC)
SALT LAKE CITY, UTAH

D-ATIS
 124.75 125.625
 CLNC DEL
 127.3 379.975
 CPDLC
 GND CON
 121.9 348.6 (Rwys 14-32, 17-35)
 123.775 348.6 (Rwys 16L-34R, 16R-34L)
 SALT LAKE CITY TOWER
 119.05 257.8 (Rwy 16L-34R)
 118.3 257.8 (Rwys 14-32, 17-35)
 132.65 336.4 (Rwy 16R-34L)
 SALT LAKE CITY DEP CON
 128.1 307.05

**TOP ALTITUDE:
FL230**



TAKEOFF MINIMUMS

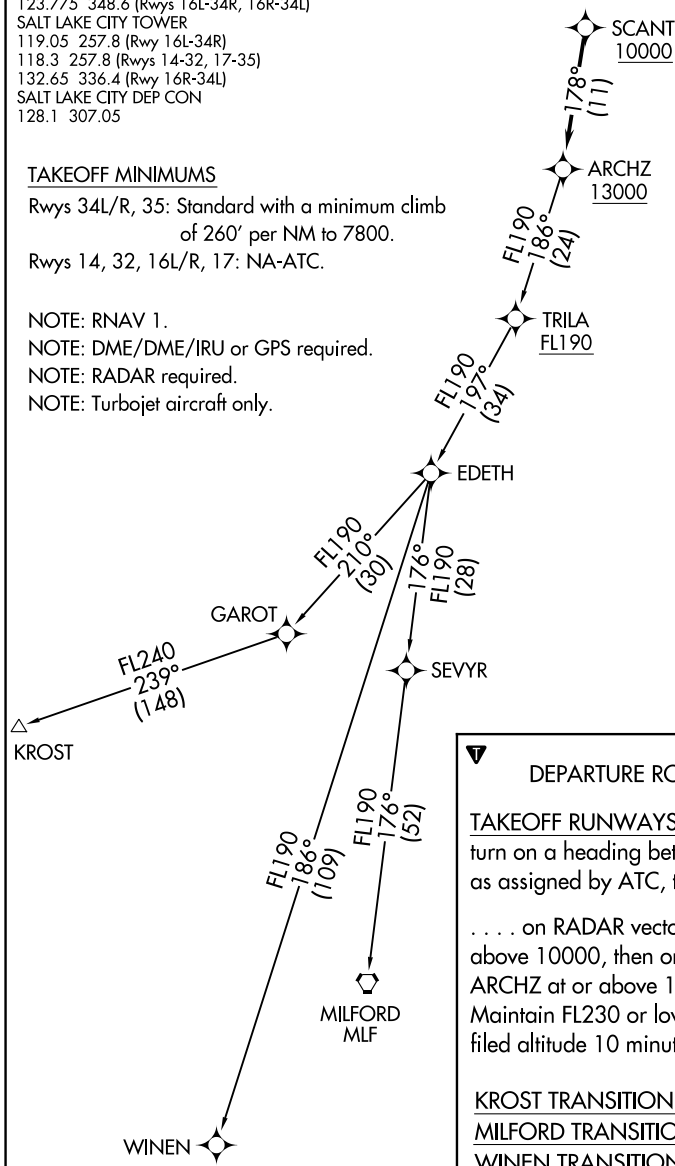
Rwys 34L/R, 35: Standard with a minimum climb
of 260' per NM to 7800.
 Rwys 14, 32, 16L/R, 17: NA-ATC.

NOTE: RNAV 1.

NOTE: DME/DME/IRU or GPS required.

NOTE: RADAR required.

NOTE: Turbojet aircraft only.



DEPARTURE ROUTE DESCRIPTION

TAKEOFF RUNWAYS 34L/R, 35: Climbing left turn on a heading between 320° CCW 260° as assigned by ATC, thence

. . . . on RADAR vectors to cross SCANT at or above 10000, then on track 178° to cross ARCHZ at or above 13000, then on (transition). Maintain FL230 or lower filed altitude. Expect filed altitude 10 minutes after departure.

KROST TRANSITION (ARCHZ1.KROST)
MILFORD TRANSITION (ARCHZ1.MLF)
WINEN TRANSITION (ARCHZ1.WINEN)

SW-4, 18 APR 2024 to 16 MAY 2024

SW-4, 18 APR 2024 to 16 MAY 2024

ARCHZ ONE DEPARTURE (RNAV)
 (ARCHZ1.ARCHZ) 24MAY18

SALT LAKE CITY, UTAH
 SALT LAKE CITY INTL (SLC)