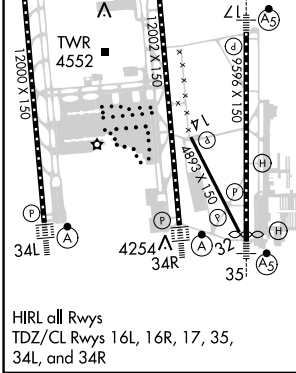
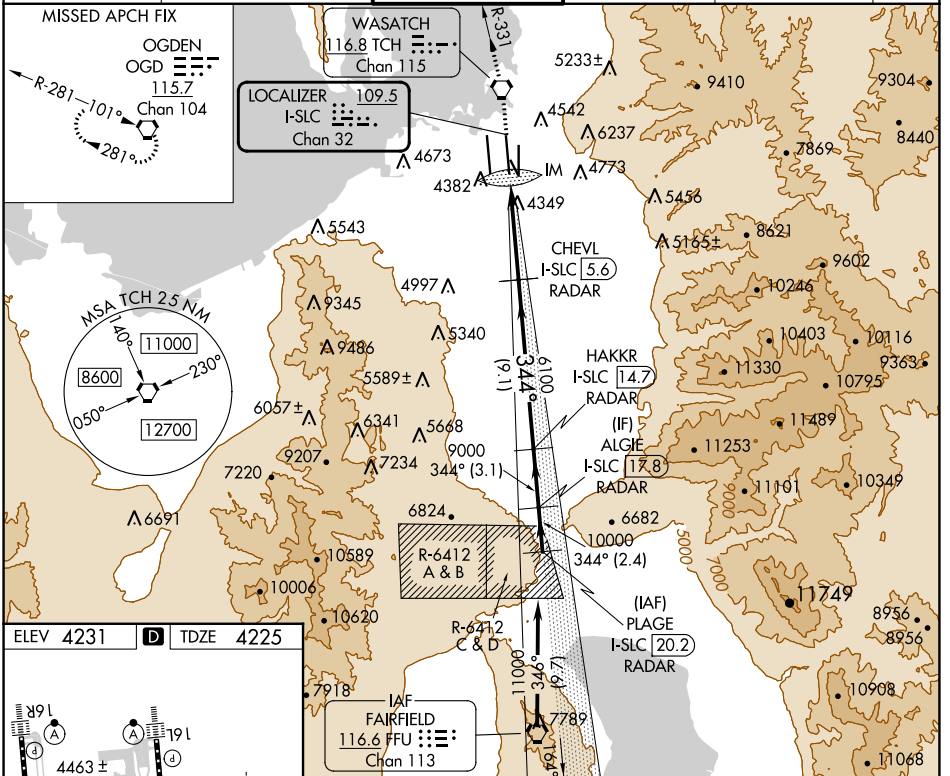


LOC/DME I-SLC 109.5 Chan 32	APP CRS 344°	Rwy Idg 12002 TDZE 4225 Apt Elev 4231
---	------------------------	--

ILS RWY 34R (CAT II & III)

SALT LAKE CITY INTL (SLC)

<p>Simultaneous approach authorized. CAT II: RVR 1000 authorized with specific OPSPEC, MSPEC, or LOA approval and use of autoland or HUD to touchdown.</p>		<p>ALSIF-2</p>	<p>MISSED APPROACH: Climb to 9000 direct TCH VORTAC and on TCH VORTAC R-331 to OGD VORTAC and hold.</p>		
D-ATIS 124.75 125.625	SALT LAKE CITY APP CON 125.7 284.6	SALT LAKE CITY TOWER 119.05 257.8	GND CON 123.775 348.6	CLNC DEL 127.3 379.975	CPDLC



9000 TCH	TCH R-331	OGD	VGS1 and ILS glidepath not coincident (VGS1 Angle 3.00°/TCH 73).		PLAGE I-SLC [20.2] RADAR
			CHEVL I-SLC [5.6] RADAR	HAKKR I-SLC [14.7] RADAR	ALGIE I-SLC [17.8] RADAR
			<p>11000 10000 9000</p>		
<p>GS 3.00° TCH 53</p>			<p>5.7 NM 9.1 NM 3.1 NM 2.4 NM</p>		

CATEGORY	A	B	C	D
S-ILS 34R	CAT II RA 100/12 100 DA 4325			
S-ILS 34R	CAT III RVR 03			

CATEGORY II & III ILS - SPECIAL AIRCREW & AIRCRAFT CERTIFICATION REQUIRED

SW-4, 18 APR 2024 to 16 MAY 2024

SW-4, 18 APR 2024 to 16 MAY 2024