

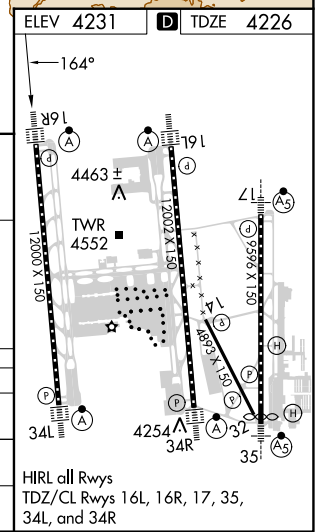
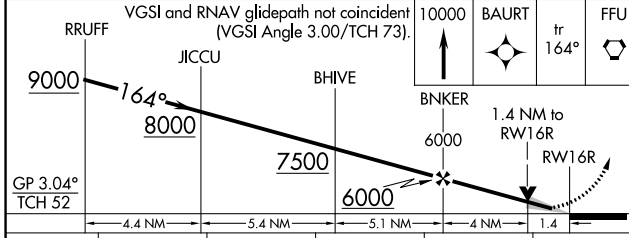
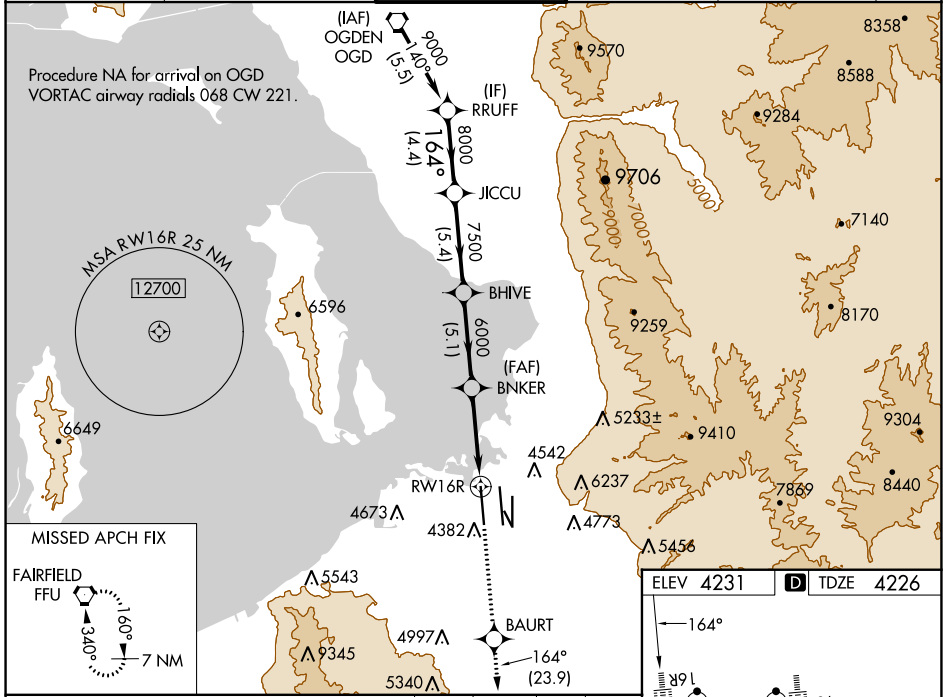
WAAS CH <b>42746</b> <b>W16A</b>	APP CRS <b>164°</b>	Rwy Idg <b>12000</b> TDZE <b>4226</b> Apt Elev <b>4231</b>
--	------------------------	--

# RNAV (GPS) RWY 16R

SALT LAKE CITY INTL (SLC)

<b>RNP APCH - GPS.</b> ⚠ Simultaneous approach authorized. LNAV procedure NA during simultaneous operations. Use of FD or AP required during simultaneous operations. For uncompensated Baro-VNAV systems, LNAV/VNAV NA below -10°C or above 46°C. For inop ALS, increase LPV Cat E visibility to RVR 4000, increase LNAV/VNAV Cat E visibility to RVR 6000, and increase LNAV Cat C/D/E visibility to 1½ SM.		ALSF-2 
--	--	------------

D-ATIS <b>124.75 125.625</b>	SALT LAKE CITY APP CON <b>125.7 284.6</b>	SALT LAKE CITY TOWER <b>132.65 336.4</b>	GND CON <b>123.775 348.6</b>	CLNC DEL <b>127.3 379.975</b>	CPDLC
---------------------------------	--	---	---------------------------------	----------------------------------	-------



CATEGORY	A	B	C	D	E
LPV DA		4426/18	200 (200-½)		
LNAV/VNAV DA		4620/35	394 (400-¾)		
LNAV MDA	4740/24	514 (600-½)		4740/55	514 (600-1)

SW-4, 18 APR 2024 to 16 MAY 2024

SW-4, 18 APR 2024 to 16 MAY 2024