

WAAS CH 49230 W34A	APP CRS 344°	Rwy ldg 12002 TDZE 4222 Apt Elev 4227
--	------------------------	--

RNAV (GPS) RWY 34R

SALT LAKE CITY INTL (SLC)

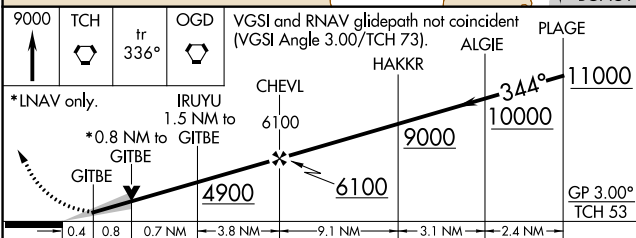
V Simultaneous approach authorized. DME/DME RNP-0.3 NA. Use of FD or AP providing RNAV track guidance required during simultaneous operations. LNAV procedure NA during simultaneous operations. For uncompensated Baro-VNAV systems, LNAV/VNAV NA below -17°C (1°F) or above 49°C (121°F). For inop ALS, increase LPV Cat E visibility to 3/4, LNAV/VNAV Cat E visibility to 1/4 and LNAV Cate C/D/E to 1/2 SM.

ALSIF-2
MISSED APPROACH: Climb to 9000 direct TCH VORTAC and on track 336° to OGD VORTAC and hold.

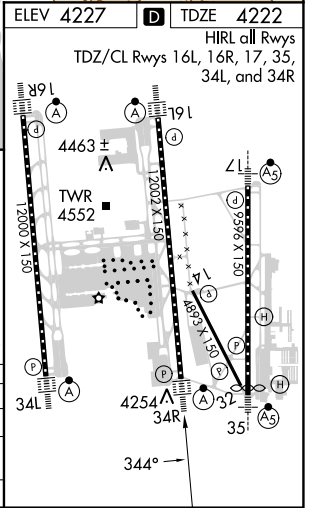
D-ATIS 124.75 125.625	SALT LAKE CITY APP CON 125.7 284.6	SALT LAKE CITY TOWER 119.05 257.8	GND CON 123.775 348.6	CLNC DEL 127.3 379.975	CPDLC
---------------------------------	--	---	---------------------------------	----------------------------------	-------



9000	TCH	OGD	VGSI and RNAV glidepath not coincident (VGSI Angle 3.00/TCH 73).
↑	tr 336°		
			ALGIE PLAGE
			HAKKR



CATEGORY	A	B	C	D	E
LPV DA	4422/18		200 (200-1/2)		
LNAV/VNAV DA	4735/60		513 (600-1/4)		
LNAV MDA	4700/24	478 (500-1/2)	4700/50		478 (500-1)



SW-4, 18 APR 2024 to 16 MAY 2024

SW-4, 18 APR 2024 to 16 MAY 2024