

RUGGD THREE DEPARTURE (RNAV)

AL-365 (FAA)

SALT LAKE CITY INTL (SLC)  
SALT LAKE CITY, UTAH

SW-4, 18 APR 2024 to 16 MAY 2024

D-ATIS 124.75 125.625  
 CLNC DEL 127.3 379.975  
 CPDLC  
 GND CON 121.9 348.6 (Rwys 14-32, 17-35)  
 123.775 348.6 (Rwys 16L-34R, 16R-34L)  
 SALT LAKE CITY TOWER 119.05 257.8 (Rwy 16L-34R)  
 118.3 257.8 (Rwys 14-32, 17-35)  
 132.65 336.4 (Rwy 16R-34L)  
 SALT LAKE CITY DEP CON 135.5 316.15

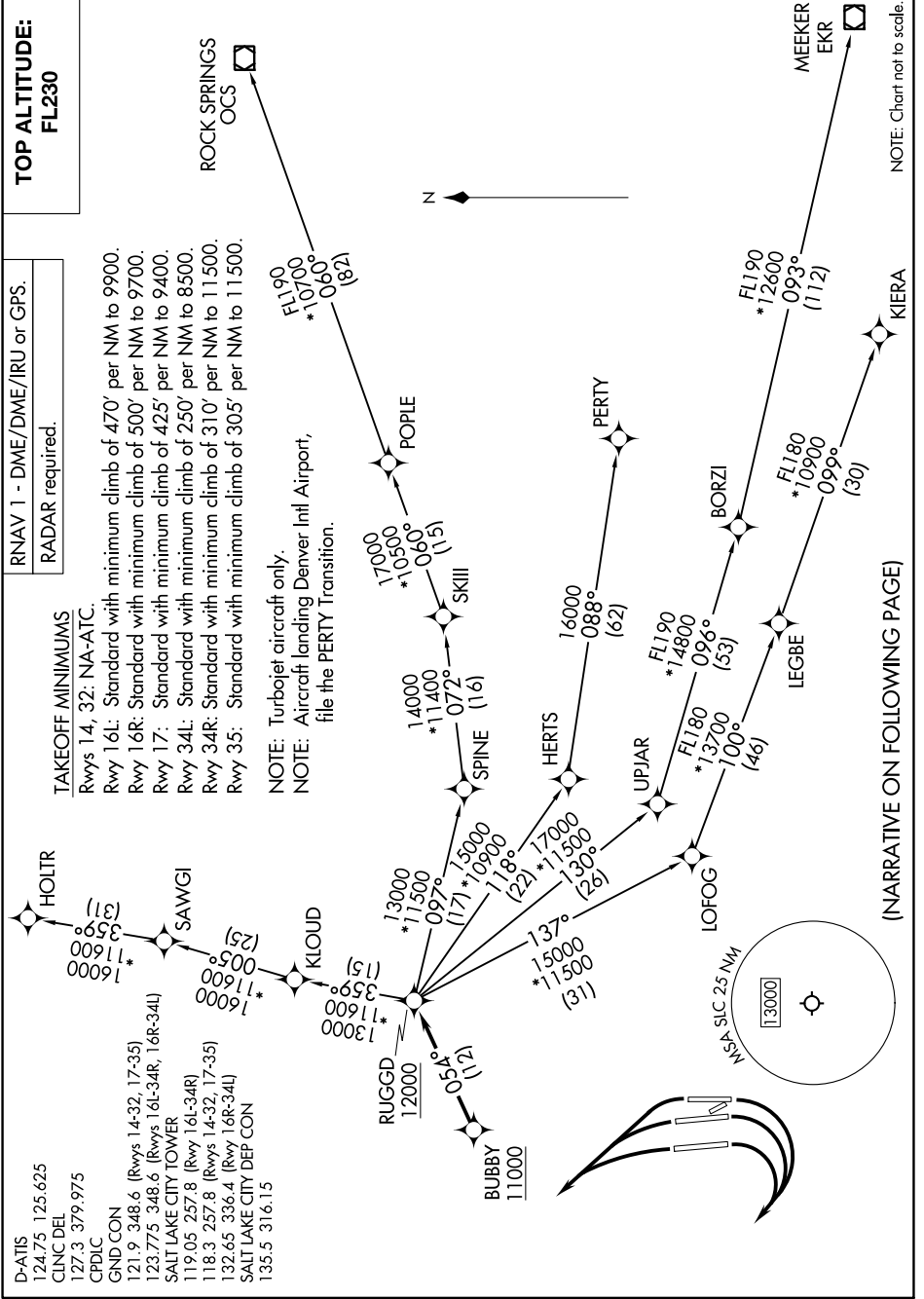
TAKEOFF MINIMUMS

Rwys 14, 32: NA-AIC.  
 Rwy 16L: Standard with minimum climb of 470' per NM to 9900.  
 Rwy 16R: Standard with minimum climb of 500' per NM to 9700.  
 Rwy 17: Standard with minimum climb of 425' per NM to 9400.  
 Rwy 34L: Standard with minimum climb of 250' per NM to 8500.  
 Rwy 34R: Standard with minimum climb of 310' per NM to 11500.  
 Rwy 35: Standard with minimum climb of 305' per NM to 11500.

NOTE: Turbojet aircraft only.  
 NOTE: Aircraft landing Denver Intl Airport, file the PERTY Transition.

RNAV 1 - DME/DME/IRU or GPS.  
 RADAR required.

TOP ALTITUDE: FL230



NOTE: Chart not to scale.

(NARRATIVE ON FOLLOWING PAGE)

SW-4, 18 APR 2024 to 16 MAY 2024

RUGGD THREE DEPARTURE (RNAV)  
(RUGGD3.RUGGD) 20APR23

SALT LAKE CITY, UTAH  
SALT LAKE CITY INTL (SLC)