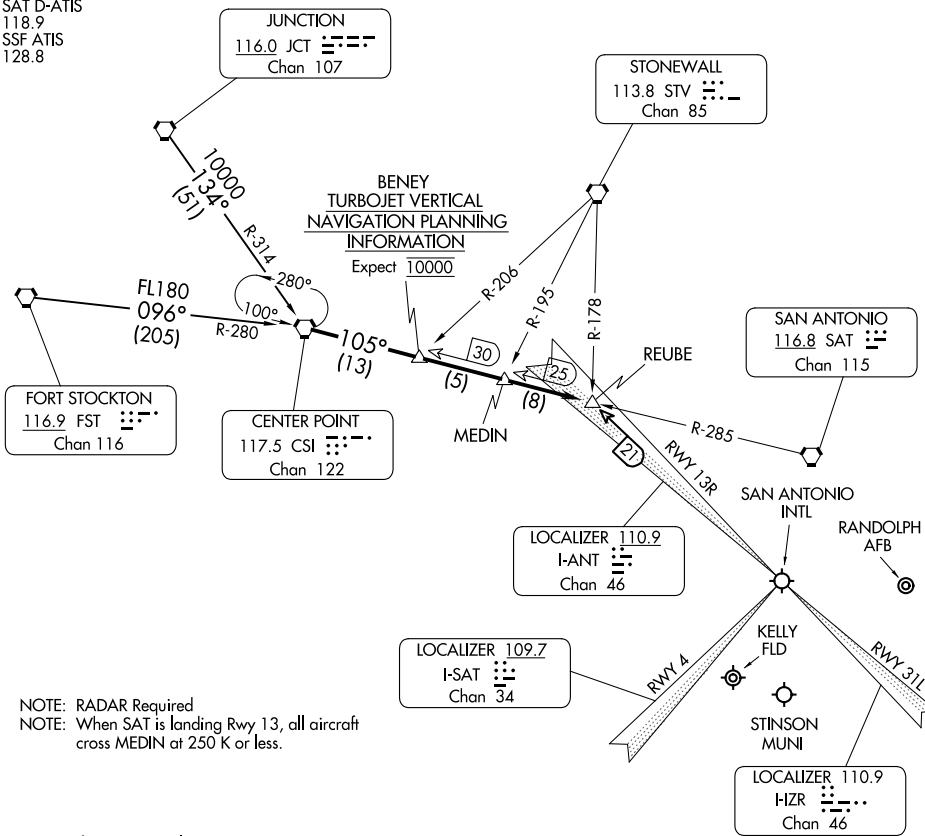


CENTERPOINT TWO ARRIVAL

SAN ANTONIO, TEXAS

SAN ANTONIO APP CON
 125.1 307.0 (Rwys 13R and 22)
 125.7 290.225 (Rwys 4 and 31L)
 KRND ATIS ★
 290.525
 KSKF ATIS
 120.45 273.5
 SAT D-ATIS
 118.9
 SSF ATIS
 128.8



NOTE: RADAR Required
 NOTE: When SAT is landing Rwy 13, all aircraft cross MEDIN at 250 K or less.

NOTE: Chart not to scale.

ARRIVAL ROUTE DESCRIPTION

FORT STOCKTON TRANSITION (FST.CSI2): From over FST VORTAC via FST R-096 and CSI R-280 to CSI VORTAC. Thence . . .

JUNCTION TRANSITION (JCT.CSI2): From over JCT VORTAC via JCT R-134 and CSI R-314 to CSI VORTAC. Thence . . .

. . . From over CSI VORTAC on CSI R-105 to REUBE INT. Expect vectors to final approach course.

CENTERPOINT TWO ARRIVAL

SAN ANTONIO, TEXAS

SC-3, 18 APR 2024 to 16 MAY 2024

SC-3, 18 APR 2024 to 16 MAY 2024