

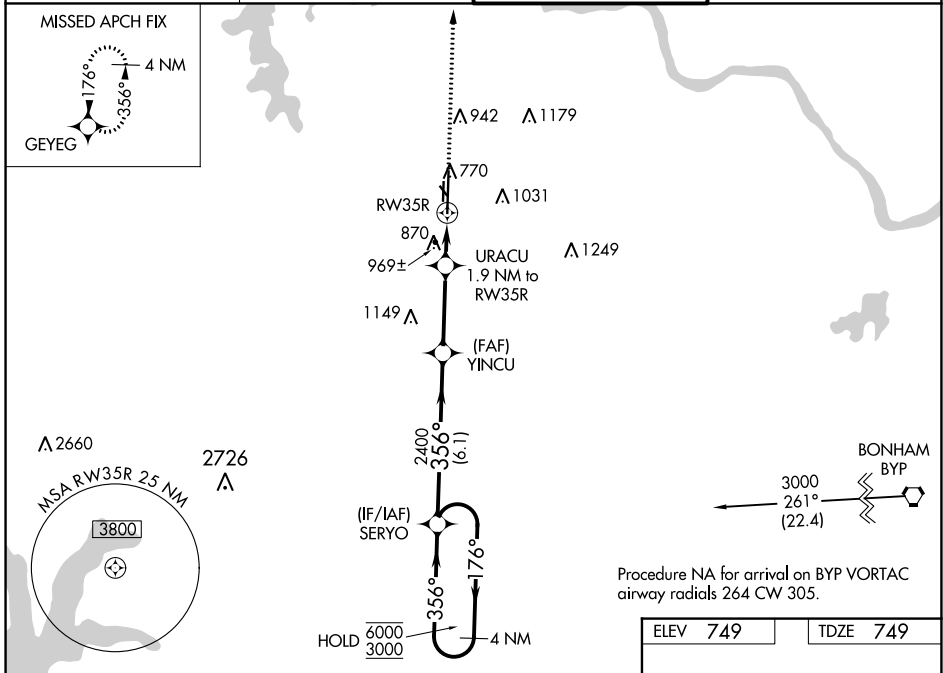
WAAS CH 65928 W35A	APP CRS 356°	Rwy Idg TDZE Apt Elev	9000 749 749
--	------------------------	-----------------------------	---

RNAV (GPS) RWY 35R

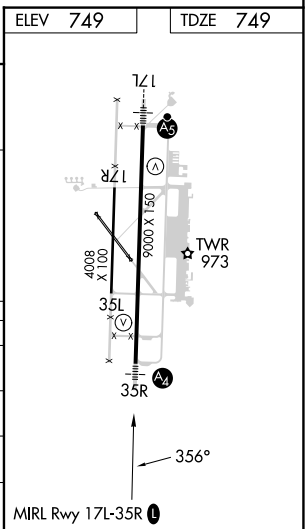
NORTH TEXAS RGNL/PERRIN FLD (GYI)

RNP APCH.	MALS	MISSED APPROACH:
<p>▼ Circling Rwy 13, 17R, 31, 35L NA at night. Inop table does not apply to LPV and LNAV/VNAV. ▲ For uncompensated Baro-VNAV systems, LNAV/VNAV NA below -16°C or above 54°C.</p>	<p>▲ 4.2</p>	<p>Climb to 3000 direct GEYEG and hold.</p>

ATIS 118.775	FORT WORTH CENTER 124.75 323.0	NORTH TEXAS TOWER ★ 120.575 (CTAF) 0 233.7	GND CON 124.125
------------------------	--	--	---------------------------



4 NM Holding Pattern		SERYO		3000	GEYEG
<p>6000 ← 176°</p> <p>3000 → 356°</p> <p>GP 3.00° TCH 51</p>		<p>2400</p> <p>YINCUB</p> <p>URACU 1.9 NM to RWY35R</p> <p>*1.3 NM to RWY35R</p> <p>RWY35R</p>		<p>*LNAV only.</p>	
6.1 NM		3.1 NM		0.6 NM	
1.3 NM		1.3 NM		1.3 NM	
CATEGORY	A	B	C	D	
LPV DA	949-3/4		200 (200-3/4)		
LNAV/VNAV DA	1294-1 1/8		545 (600-1 1/8)		
LNAV MDA	1220-3/4	471 (500-3/4)	1220-1 1/8	471 (500-1 1/8)	
▲ CIRCLING	1300-1	551 (600-1)	1400-1 3/4	1540-2 1/2	
			651 (700-1 3/4)	791 (800-2 1/2)	



SC-2, 18 APR 2024 to 16 MAY 2024

SC-2, 18 APR 2024 to 16 MAY 2024