

(GRAYM.GRAYM6) 23334  
**GRAYM SIX ARRIVAL**

AL-626 (FAA)

BEDFORD, MASSACHUSETTS

BOSTON APP CON  
 124.4 279.6  
 BRADLEY APP CON  
 119.0 327.1  
 BED ATIS  
 124.6  
 BVY ATIS  
 119.2  
 LWM ATIS  
 126.75

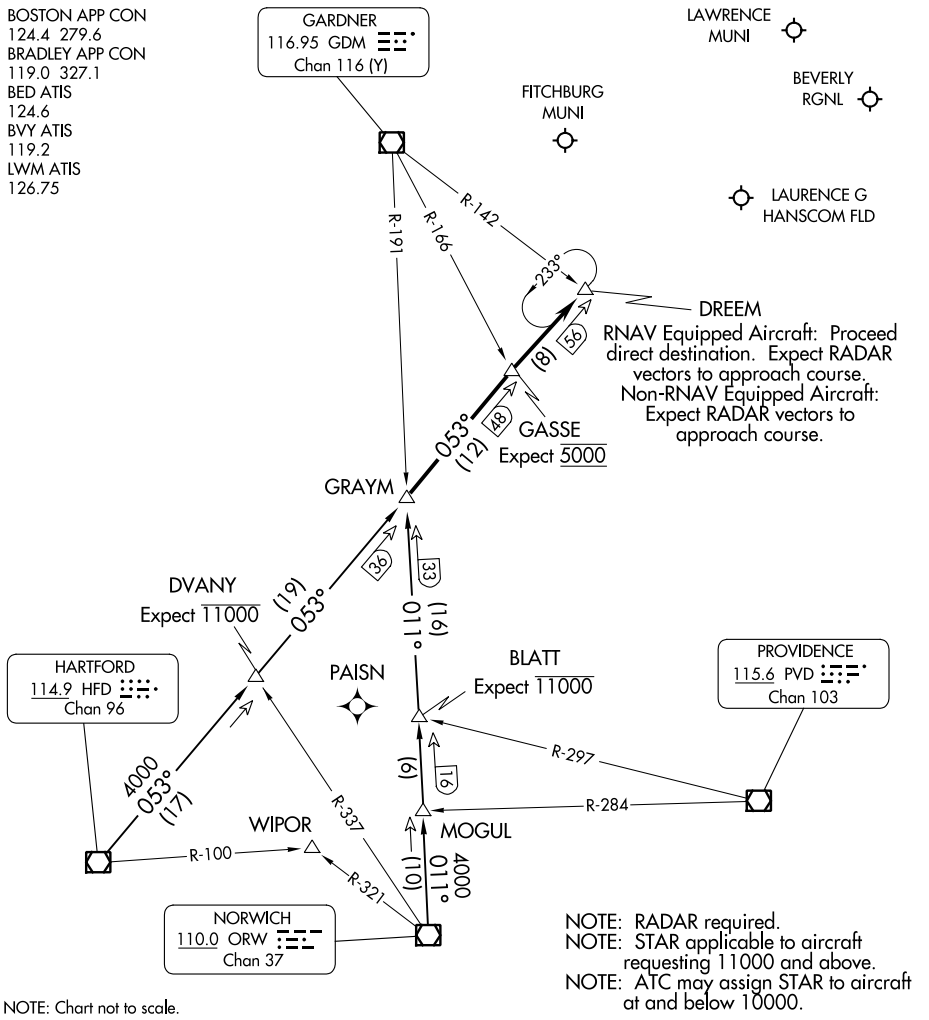
GARDNER  
 116.95 GDM  
 Chan 116 (Y)

LAWRENCE MUNI

FITCHBURG MUNI

BEVERLY RGNL

LAURENCE G HANSCOM FLD



**ARRIVAL ROUTE DESCRIPTION**

**HARTFORD TRANSITION (HFD.GRAYM6):** From over HFD VOR/DME on HFD R-053 to GRAYM. Thence. . .

**NORWICH TRANSITION (ORW.GRAYM6):** From over ORW VOR/DME on ORW R-011 to GRAYM. Thence. . .

. . . . From over GRAYM on HFD R-053 to GASSE, then to DREEM, at DREEM:

**RNAV EQUIPPED AIRCRAFT:** Proceed direct destination expect radar vectors to approach course.

**NON-RNAV EQUIPPED AIRCRAFT:** Expect radar vectors to approach course.

**GRAYM SIX ARRIVAL**  
 (GRAYM.GRAYM6) 08NOV18

BEDFORD, MASSACHUSETTS

NE-1, 18 APR 2024 to 16 MAY 2024

NE-1, 18 APR 2024 to 16 MAY 2024