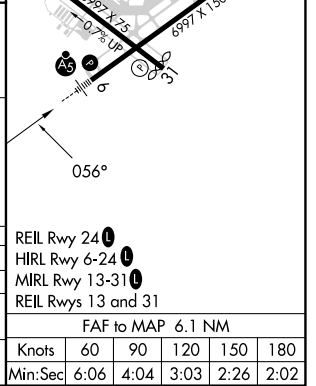
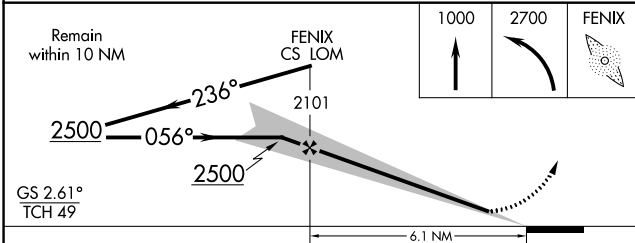
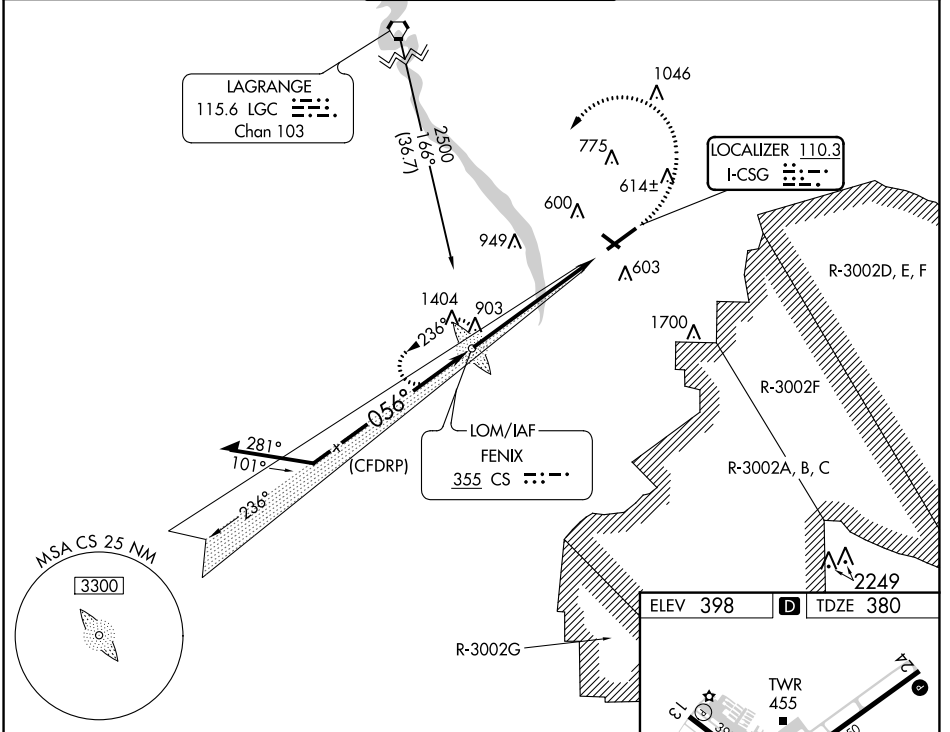


LOC I-CSG <b>110.3</b>	APP CRS <b>056°</b>	Rwy Idg <b>6997</b>
		TDZE <b>380</b>
		Apt Elev <b>398</b>

# ILS or LOC RWY 6

COLUMBUS (CSG)

ADF or RADAR required.			MISSED APPROACH: Climb to 1000, then climbing left turn to 2700 direct FENIX LOM and hold, continue climb-in-hold to 2700.	
<p>Circling to Rwy 13, 24 and 31 NA at night. Autopilot coupled approach NA below 900. Rwy 6 helicopter visibility reduction below 3/4 SM NA. For inop ALS, increase S-ILS 06 all Cats visibility to RVR 4500. For inop ALS, increase S-LOC 06 Cats A and B visibility to RVR 5500 and Cats C and D visibility to 1 1/4 SM.</p>				
ATIS <b>127.75</b>	ATLANTA APP CON * <b>125.5 323.1</b>	COLUMBUS TOWER * <b>120.1 (CTAF) 257.8</b>	GND CON <b>121.9 348.6</b>	UNICOM <b>122.95</b>



CATEGORY	A	B	C	D
S-ILS 6		664/40	284 (300-3/4)	
S-LOC 6	1020/40	640 (700-3/4)	1020-1 3/8	640 (700-1 3/8)
CIRCLING	1020-1	622 (700-1)	1140-2 1/4 742 (800-2 1/4)	1300-3 902 (1000-3)

SE-4, 18 APR 2024 to 16 MAY 2024

SE-4, 18 APR 2024 to 16 MAY 2024