

# KEOLA THREE DEPARTURE

## DEPARTURE ROUTE DESCRIPTION

Turn right/left to heading assigned by the Tower, expect vectors to KEOLA, maintain 5000; then on transition. Expect clearance to enroute altitude/flight level at KEOLA.

**KATHS TRANSITION (KEOLA3.KATHS):** From over KEOLA on HNL R-258 and SOK R-234 to KATHS.

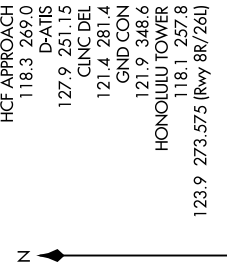
**LIHUE TRANSITION (KEOLA3.LIH):** From over KEOLA on SOK R-111 and LH R-148 to LIH VORTAC.

**LIJIA TRANSITION (KEOLA3.LIJA):** From over KEOLA on track 282° to LIJIA.

**NONNI TRANSITION (KEOLA3.NONNI):** From over KEOLA on HNL R-258 to NONNI.

**PUPPI TRANSITION (KEOLA3.PUPPI):** From over KEOLA on track 271° to PUPPI.

**SOUTH KAUI TRANSITION (KEOLA3.SOK):** From over KEOLA on SOK R-111 to SOK VORTAC.

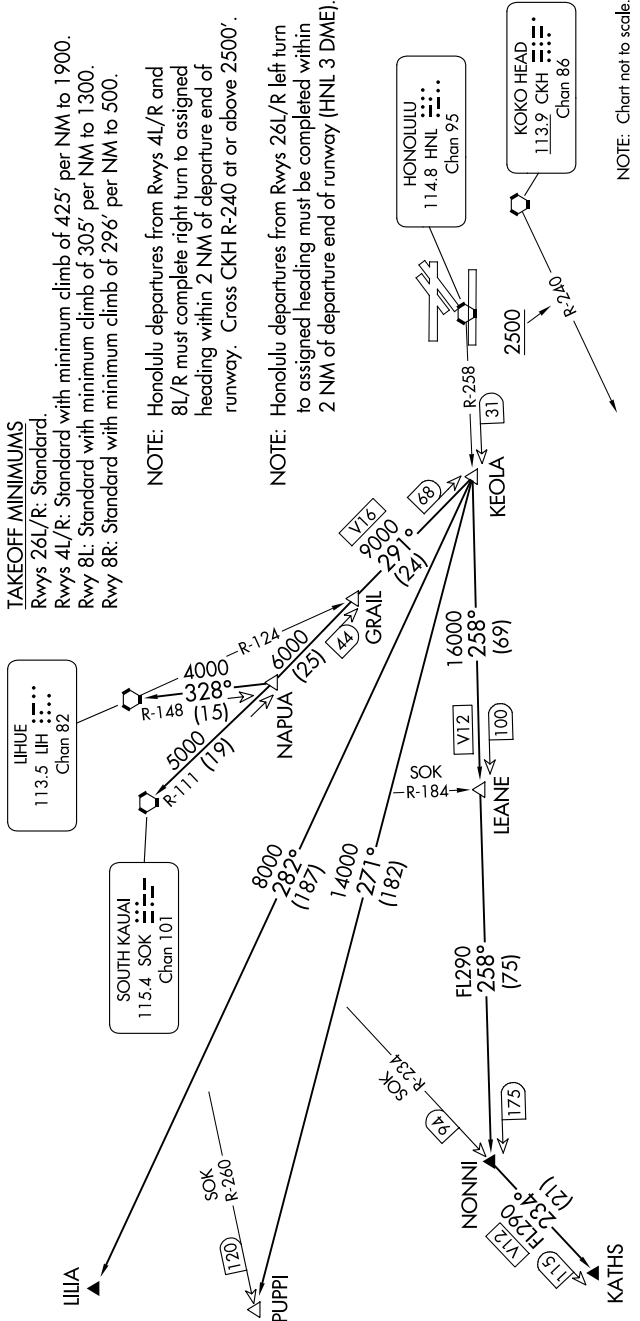


### TAKEOFF MINIMUMS

Rwys 26L/R: Standard.  
 Rwys 4L/R: Standard with minimum climb of 425' per NM to 1900.  
 Rwy 8L: Standard with minimum climb of 305' per NM to 1300.  
 Rwy 8R: Standard with minimum climb of 296' per NM to 500.

**NOTE:** Honolulu departures from Rwys 4L/R and 8L/R must complete right turn to assigned heading within 2 NM of departure end of runway. Cross CKH R-240 at or above 2500'.

**NOTE:** Honolulu departures from Rwys 26L/R left turn to assigned heading must be completed within 2 NM of departure end of runway (HNL 3 DME).



NOTE: Chart not to scale.

# KEOLA THREE DEPARTURE