

LOC RWY 8L

DANIEL K INOUE INTL (HNL) (PHNL)

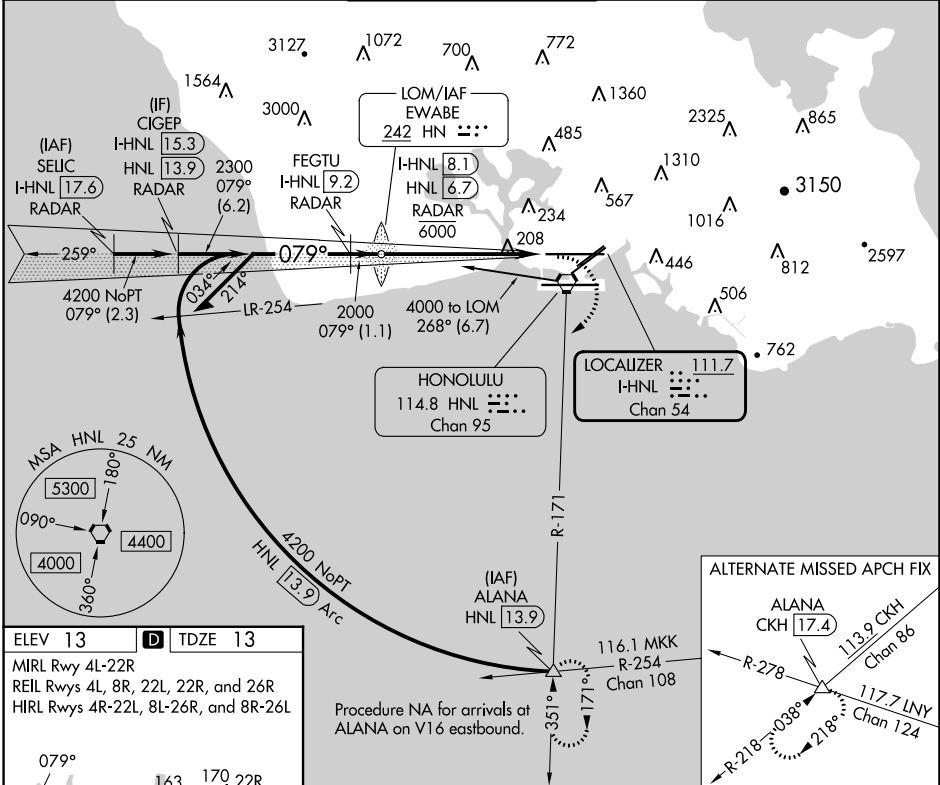
LOC/DME I-HNL	APP CRS	Rwy Idg	12312
111.7	079°	TDZE	13
Chan 54		Apt Elev	13

DME or RADAR required.

▼ Circling Rwy 22R NA at night. Circling NA for Cats A and B northwest of Rwy's 8L and 22R. Circling NA for Cats C and D north of Rwy 8L-26R. Circling NA to sea lanes 4W, 8W, 22W, and 26W.

MALSRS MISSED APPROACH: Climbing right turn to 5000 on heading 200° and HNL VORTAC R-171 to ALANA INT/HNL 13.9 DME and hold, continue climb-in-hold to 5000.

D-ATIS	HCF APPROACH	HONOLULU TOWER	GND CON	CLNC DEL
127.9 251.15	118.3 269.0	118.1 257.8 123.9 273.575 (Rwy 8R/26L)	121.9 348.6	121.4 281.4



ELEV 13 D TDZE 13

MIRL Rwy 4L-22R
REIL Rwy's 4L, 8R, 22L, 22R, and 26R
HIRL Rwy's 4R-22L, 8L-26R, and 8R-26L

WATER RWYS:
8W-26W 5090 X 300
4W-22W 3000 X 150

FAF to MAP 5.9 NM

Knots	60	90	120	150	180
Min:Sec	5:54	3:56	2:57	2:22	1:58

CIRCLING

A	B	C	D
680-1	760-1	820-2¼	1400-3
667 (700-1)	747 (800-1)	807 (900-2¼)	1387 (1400-3)

	EWABE HN LOM I-HNL 8.1 / RADAR 6000	ALANA
Remain within 10 NM		
3900	FEGTU I-HNL 9.2 RADAR	ALANA
	2300	
	2000	
Use I-HNL DME when on the localizer course.		
	1.1 NM	5.9 NM
5000	R-171	ALANA
hdg 200°		

PAC, 21 MAR 2024 to 16 MAY 2024

PAC, 21 MAR 2024 to 16 MAY 2024