

(LBY2.LBY) 24025

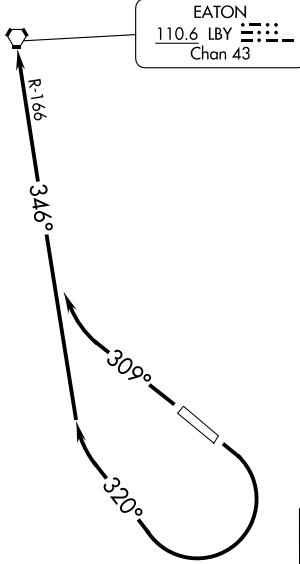
AL-853 (FAA)

HATTIESBURG BOBBY L CHAIN MUNI (HBG)
HATTIESBURG, MISSISSIPPI

EATON TWO DEPARTURE

ASOS 135.425
HOUSTON CENTER
126.8 327.8
CTAF 122.8

**TOP ALTITUDE:
3000**

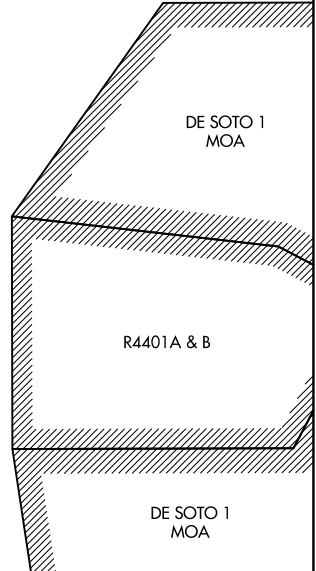


TAKEOFF MINIMUMS:

Rwy 13: ATC climb of 300' per NM to 600.

Rwy 13: Do not exceed 230K until established on heading 320°.

Rwy 31: Standard.



SC-4, 18 APR 2024 to 16 MAY 2024

SC-4, 18 APR 2024 to 16 MAY 2024

NOTE: Chart not to scale.



DEPARTURE ROUTE DESCRIPTION

TAKEOFF RUNWAY 13: Climbing right turn heading 320° and LBY VORTAC R-166 to LBY VORTAC. Thence. . . .

TAKEOFF RUNWAY 31: Climb heading 309° and LBY VORTAC R-166 to LBY VORTAC. Thence. . . .

. . . .maintain 3000 or ATC assigned altitude. Expect clearance to filed altitude 10 minutes after departure.

EATON TWO DEPARTURE

(LBY2.LBY) 21JUL16

HATTIESBURG, MISSISSIPPI
HATTIESBURG BOBBY L CHAIN MUNI (HBG)