

| | | | |
|--|------------------------|-----------------------------|---|
| WAAS CH 49034 W17A | APP CRS 171° | Rwy Idg TDZE Apt Elev | 4996 782 782 |
|--|------------------------|-----------------------------|---|

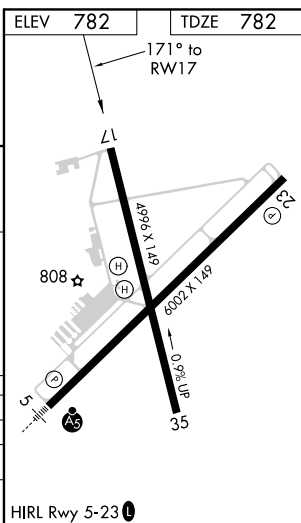
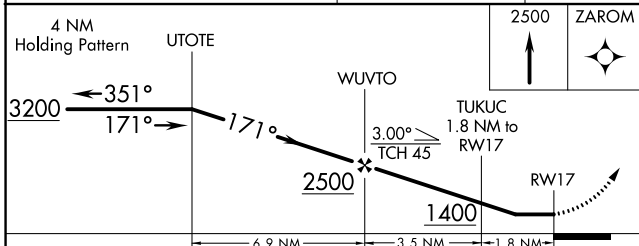
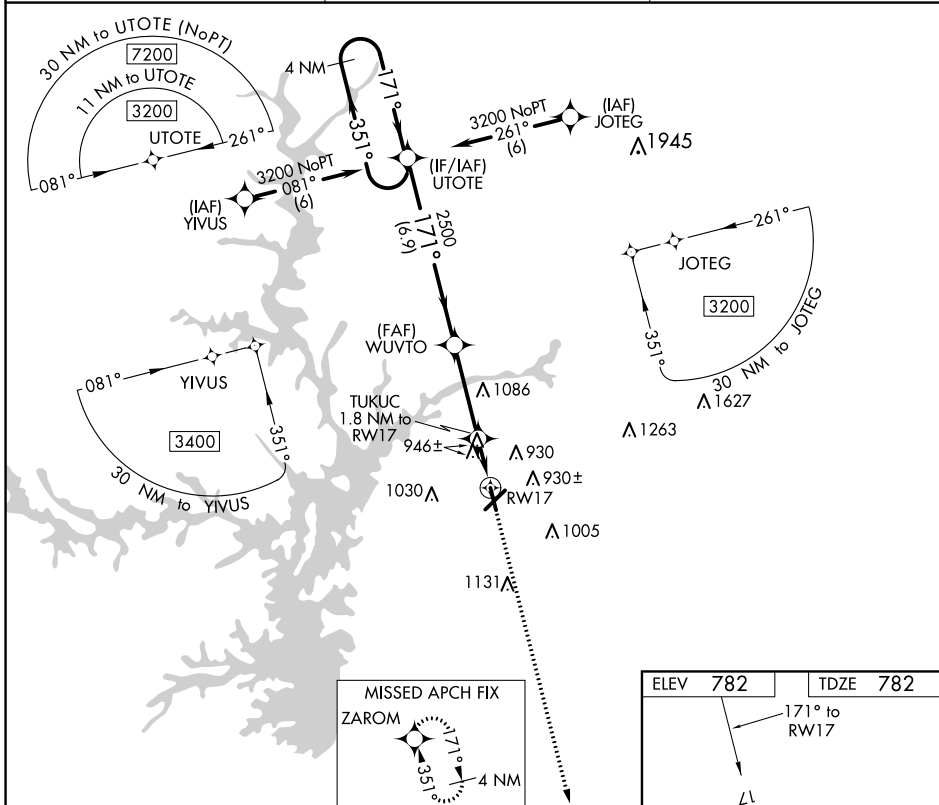
RNAV (GPS) RWY 17

ANDERSON RGNL (A.ND)

⚠ DME/DME RNP-0.3 NA. When local altimeter setting not received, use Clemson altimeter setting and increase all MDA 60 feet and increase LP, LNAV and Circling Cats C/D visibility ¼ mile.
⚠ Straight-in Rwy 17 NA at night, Circling Rwy 17, 35 NA at night. 17, 35 helicopter visibility reduction below 1 SM NA.

MISSED APPROACH: Climb to 2500 direct ZAROM and hold.

| | | |
|------------------------|---|-----------------------|
| ASOS 120.675 | GREER APP CON ★ 118.8 270.275 | CTAF 123.60 |
|------------------------|---|-----------------------|



| CATEGORY | A | B | C | D |
|-------------------|-----------------------|-----------------------|-------------------------|-------------------------|
| LP MDA | 1200-1 | 418 (500-1) | 1200-1½ | 418 (500-1½) |
| LNAV MDA | 1220-1 | 438 (500-1) | 1220-1¼ | 438 (500-1¼) |
| C CIRCLING | 1260-1 478 (500-1) | 1320-1 538 (600-1) | 1440-1¾ 658 (700-1¾) | 1500-2¼ 718 (800-2¼) |

SE-2, 18 APR 2024 to 16 MAY 2024

SE-2, 18 APR 2024 to 16 MAY 2024