

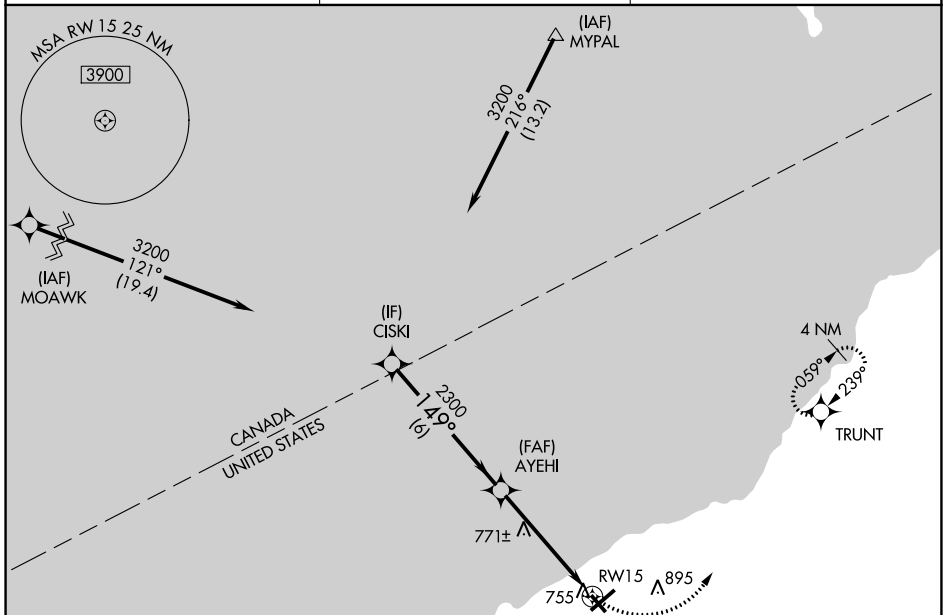
APP CRS	Rwy Idg	4000
149°	TDZE	684
	Apt Elev	692

RNAV (GPS) RWY 15

CHAUTAUGUA COUNTY/DUNKIRK (DKK)

RNP APCH.	<p>⚠ Circling to Rwy 6, 24, 33 NA at night.</p> <p>⚠ Circling Cat D NA southeast of Rwy 6 and southwest of Rwy 33.</p> <p>❄ -22°C Rwy 15 helicopter visibility reduction below $\frac{3}{4}$ SM NA.</p>	<p>MISSED APPROACH: Climbing left turn to 3200 direct TRUNT and hold, continue climb-in-hold to 3200.</p>
-----------	--	---

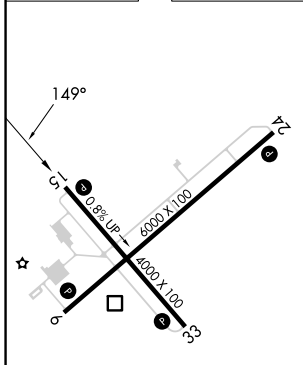
ASOS 119.275	BUFFALO APP CON 126.5 317.6	UNICOM 123.075 (CTAF) 0
------------------------	---------------------------------------	-----------------------------------



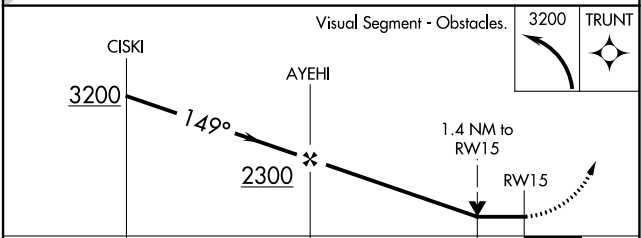
NE-2, 18 APR 2024 to 16 MAY 2024

NE-2, 18 APR 2024 to 16 MAY 2024

ELEV 692	TDZE 684
----------	----------



Visual Segment - Obstacles.	3200	TRUNT
-----------------------------	------	-------



CATEGORY	A	B	C	D
LNAV MDA	1140-1	456 (500-1)	1140-1 $\frac{3}{8}$	456 (500-1 $\frac{3}{8}$)
C CIRCLING	1200-1 508 (600-1)	1320-1 628 (700-1)	1640-2 $\frac{3}{4}$ 948 (1000-2 $\frac{3}{4}$)	2140-3 1448 (1500-3)

MIRL Rwy 15-33 0
REIL Rwy 6 and 24 0
HIRL Rwy 6-24 0