

LOC/DME I-EAU 109.5 Chan 32	APP CRS 224°	Rwy Idg TDZE Apt Elev	7301 913 913
---	------------------------	-----------------------------	---

ILS or LOC RWY 22

CHIPPEWA VALLEY RGNL (EAU)

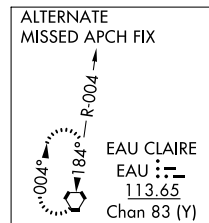
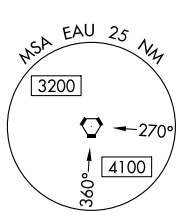
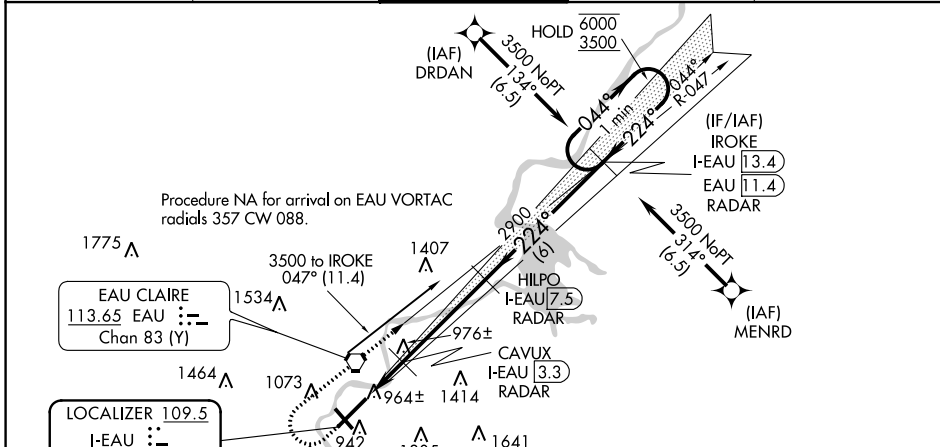
From DRDAN and MENRD RNAV-1 GPS required.
DME or RADAR required.

⚠ For inop ALS increase S-LOC 22 Cat C and D visibility to ¾ SM. For inop ALS when using Rice Lake altimeter setting, increase S-ILS 22 all Cats visibility to 1 SM. When local altimeter setting not received, use Rice Lake altimeter setting and increase DA 110 feet and all MDA 120 feet, increase S-LOC 22 Cat C and D and Circling Cat C visibility ¼ SM. VDP NA when using Rice Lake altimeter setting.

MALSR
⚠

MISSED APPROACH: Climb to 1600 then climbing right turn to 3500 on EAU VORTAC R-047 to IROKE/I-EAU LOC/DME 13.4 DME/RADAR and hold.

ATIS 126.025	MINNEAPOLIS CENTER 125.3 335.6	EAU CLAIRE TOWER ★ 118.575 (CTAF) 0	GND CON 120.925	UNICOM 122.95
------------------------	--	---	---------------------------	-------------------------



ELEV 913 **D** TDZE 913

HIRL Rwy 4-22

MIRL Rwy 14-32

REIL Rwy 4 and 14

224° 6.1 NM from FAF

TWR 968

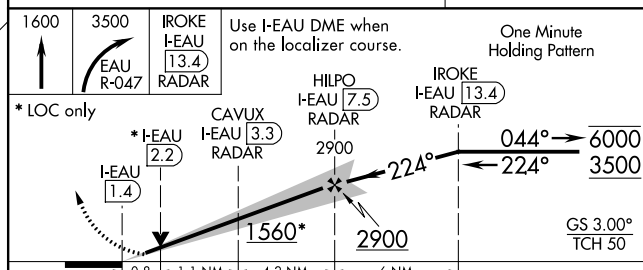
941

5000 x 100

8101 x 150

0.6% DOWN

32



FAF to MAP 6.1 NM					
Knots	60	90	120	150	180
Min:Sec	6:06	4:04	3:03	2:26	2:02

CATEGORY	A	B	C	D
S-ILS 22	1113-½	200 (200-½)		
S-LOC 22	1220-½	307 (400-½)		
C CIRCLING	1480-1 567 (600-1)	1540-1 627 (700-1)	1660-2¼ 747 (800-2¼)	2200-3 1287 (1300-3)

EC-3, 18 APR 2024 to 16 MAY 2024

EC-3, 18 APR 2024 to 16 MAY 2024