

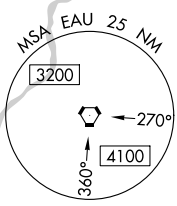
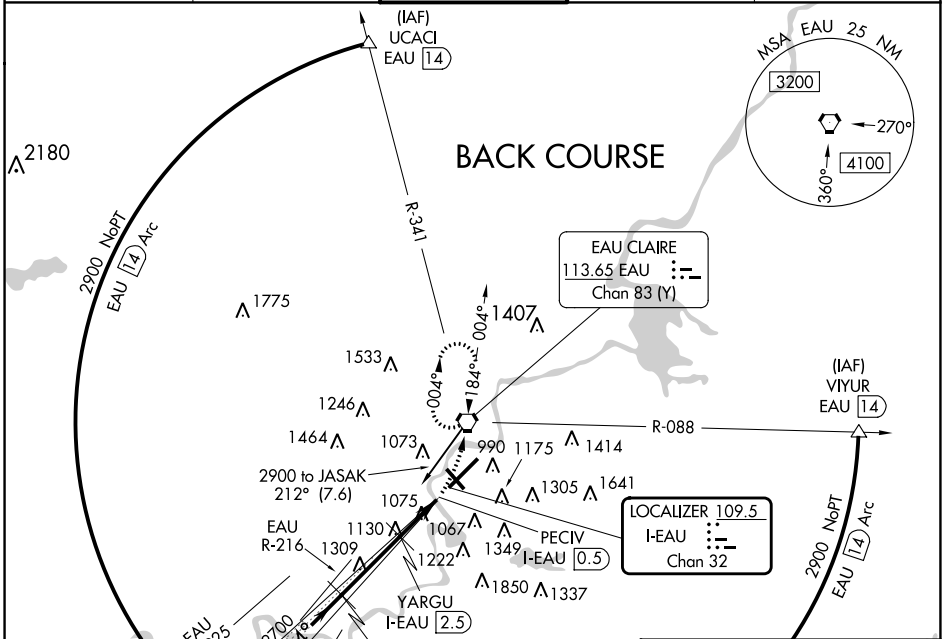
LOC/DME I-EAU 109.5 Chan 32	APP CRS 044°	Rwy Idg TDZE Apt Elev	7701 889 913
---	------------------------	-----------------------------	---

LOC BC RWY 4 CHIPPEWA VALLEY RGNL (EAU)

▼ DME required. VDP NA with Rice Lake Rgnl/Carl's Fld airport altimeter setting. When local altimeter setting not received, use Rice Lake Rgnl/Carl's Fld airport altimeter setting increase all MDA 120 feet, increase S-4 Cats C and D and Circling Cat C visibility $\frac{1}{4}$ mile. Circling Rwy 32 NA at night.

MISSED APPROACH: Climb to 2900 then left turn direct EAU VORTAC and hold.

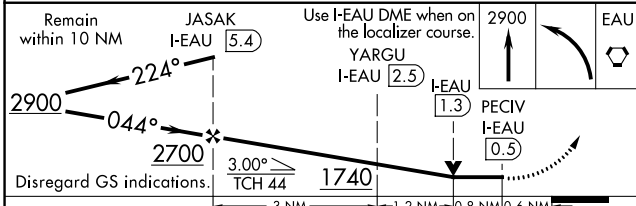
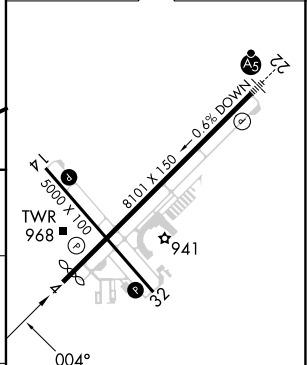
ATIS 126.025	MINNEAPOLIS CENTER 125.3 335.6	EAU CLAIRE TOWER ★ 118.575 (CTAF) 0	GND CON 120.925	UNICOM 122.95
------------------------	--	---	---------------------------	-------------------------



EAU CLAIRE
113.65 EAU ---
Chan 83 (Y)

LOCALIZER 109.5
I-EAU ---
Chan 32

ELEV 913	D	TDZE 889
----------	----------	----------



CATEGORY	A	B	C	D
S-4	1380-1	491 (500-1)	1380-1 $\frac{3}{8}$	491 (500-1 $\frac{3}{8}$)
C CIRCLING	1480-1 567 (600-1)	1540-1 627 (700-1)	1660-2 $\frac{1}{4}$ 747 (800-2 $\frac{1}{4}$)	2200-3 1287 (1300-3)

- HIRL Rwy 4-22 **0**
- MIRL Rwy 14-32 **0**
- REIL Rws 4 and 14 **0**

EC-3, 18 APR 2024 to 16 MAY 2024

EC-3, 18 APR 2024 to 16 MAY 2024