

WAAS CH 69217 W04A	APP CRS 044°	Rwy Idg TDZE Apt Elev	7701 889 913
--	------------------------	-----------------------------	---

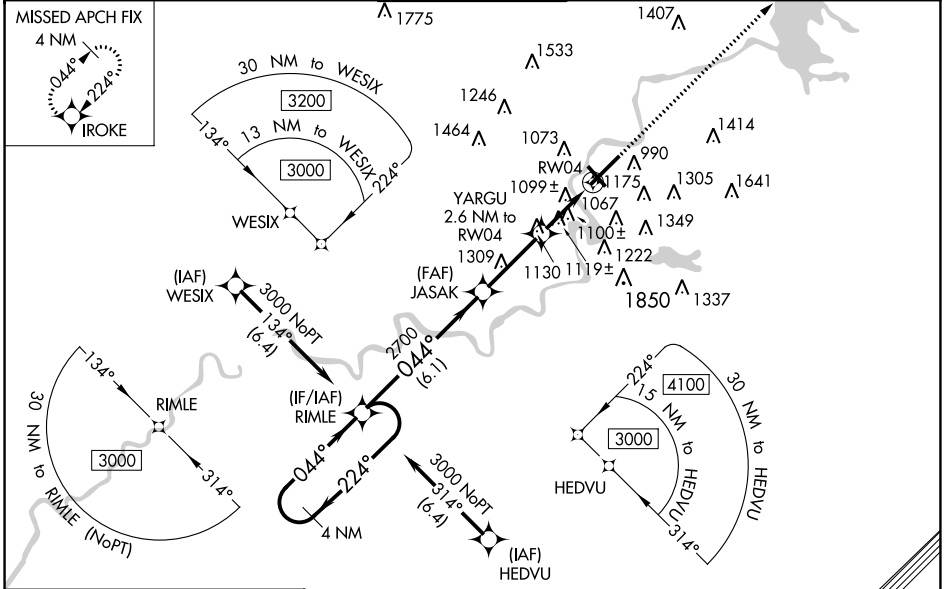
RNAV (GPS) RWY 4

CHIPPEWA VALLEY RGNL (EAU)

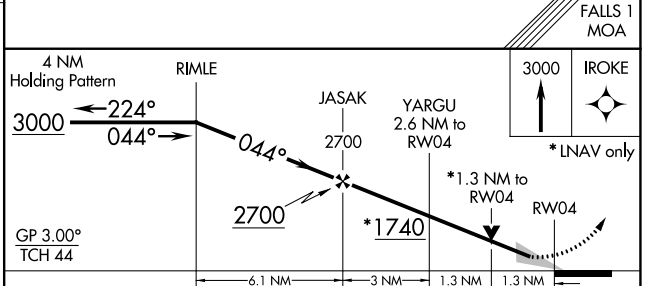
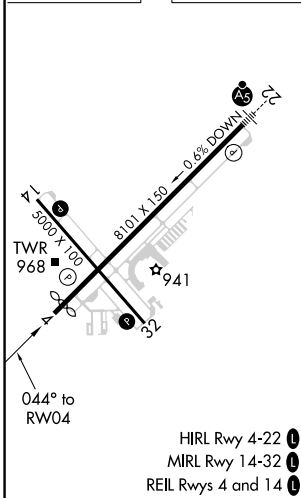
⚠ For uncompensated Baro-VNAV systems, LNAV/VNAV NA below -21°C (-5°F) or above 54°C (130°F). Baro-VNAV and VDP NA when using Rice Lake Rgnl/Carl's Fld altimeter setting. DME/DME RNP-0.3 NA. When local altimeter setting not received, use Rice Lake Rgnl/Carl's Fld altimeter setting and increase LPV DA to 1199, LNAV/VNAV DA to 1489 and all visibilities 7/8 SM. Increase all MDA 120 feet and LNAV Cat C/D and Circling Cat C visibility 1/4 SM. Circling Rwy 32 NA at night.

MISSED APPROACH:
Climb to 3000 direct IROKE and hold.

ATIS 126.025	MINNEAPOLIS CENTER 125.3 335.6	EAU CLAIRE TOWER* 118.575 (CTAF) 0	GND CON 120.925	UNICOM 122.95
------------------------	--	--	---------------------------	-------------------------



ELEV 913	D	TDZE 889
----------	----------	----------



CATEGORY	A	B	C	D
LPV DA		1089-3/4	200 (200-3/4)	
LNAV/VNAV DA		1379-15/8	490 (500-15/8)	
LNAV MDA	1360-1	471 (500-1)	1360-1 3/8	471 (500-1 3/8)
C CIRCLING	1480-1 567 (600-1)	1540-1 627 (700-1)	1660-2 1/4 747 (800-2 1/4)	2200-3 1287 (1300-3)

EC-3, 18 APR 2024 to 16 MAY 2024

EC-3, 18 APR 2024 to 16 MAY 2024