

WAAS CH 78001 W32A	APP CRS 317°	Rwy Idg 7120 TDZE 102 Apt Elev 107
---------------------------------	------------------------	---

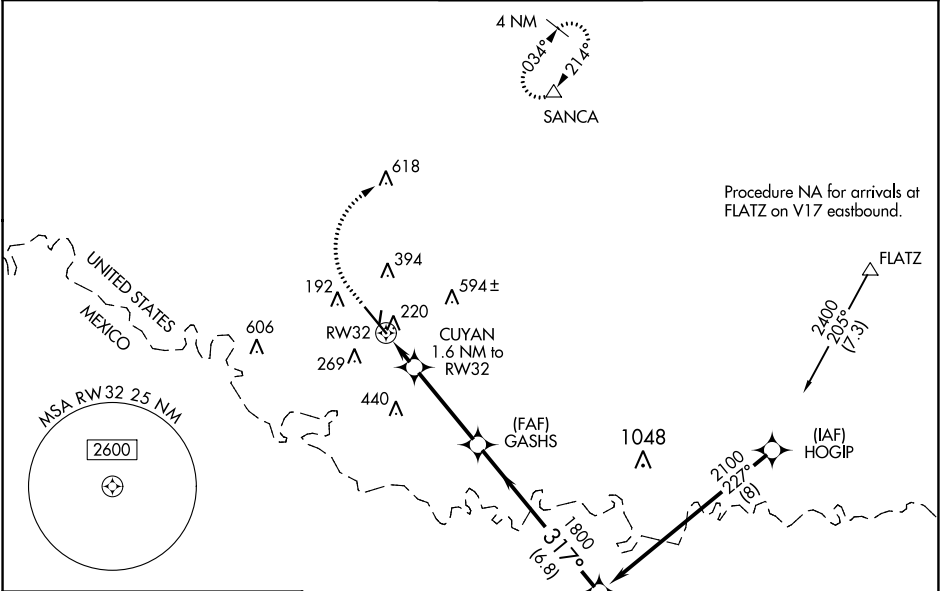
RNAV (GPS) RWY 32

MC ALLEN INTL (MFE)

⚠ For uncompensated Baro-VNAV systems, LNAV/VNAV NA below 1°C (34°F) or above 54°C (130°F). Circling NA northeast of Rwy 14-32. DME/DME RNP-0.3 NA.
⚠ When local altimeter setting not received, use Weslaco altimeter setting: increase all DA 39 feet and LNAV/VNAV all Cat visibility ¼ mile; increase all MDA 40 feet and LNAV Cat C/D visibility ½ mile. Baro-VNAV and VDP NA when using Weslaco altimeter setting.

MISSED APPROACH: Climb to 800 then climbing right turn to 2000 direct SANCA and hold.

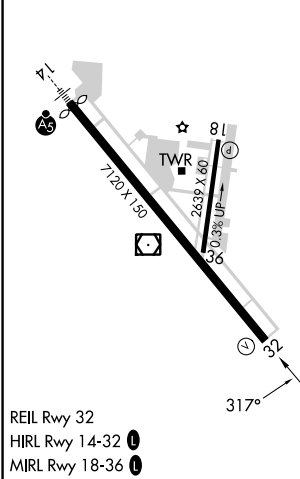
ATIS 128.5	VALLEY APP CON 126.55 377.2	MC ALLEN TOWER * 118.5 (CTAF) 0 256.9	GND CON 121.8	UNICOM 122.95
----------------------	---------------------------------------	---	-------------------------	-------------------------



SC-3, 18 APR 2024 to 16 MAY 2024

SC-3, 18 APR 2024 to 16 MAY 2024

ELEV 107	D TDZE 102
----------	-------------------



800	2000	SANCA	VGSI and RNAV glidepath not coincident (VGSI Angle 3.00/TCH 53).	
*LNAV only				
CATEGORY	A	B	C	D
LPV DA		302-¾	200 (200-¾)	
LNAV/VNAV DA		391-7/8	289 (300-7/8)	
LNAV MDA		480-1	378 (400-1)	
C CIRCLING	580-1	473 (500-1)	580-1½ 473 (500-1½)	800-2¼ 693 (700-2¼)