

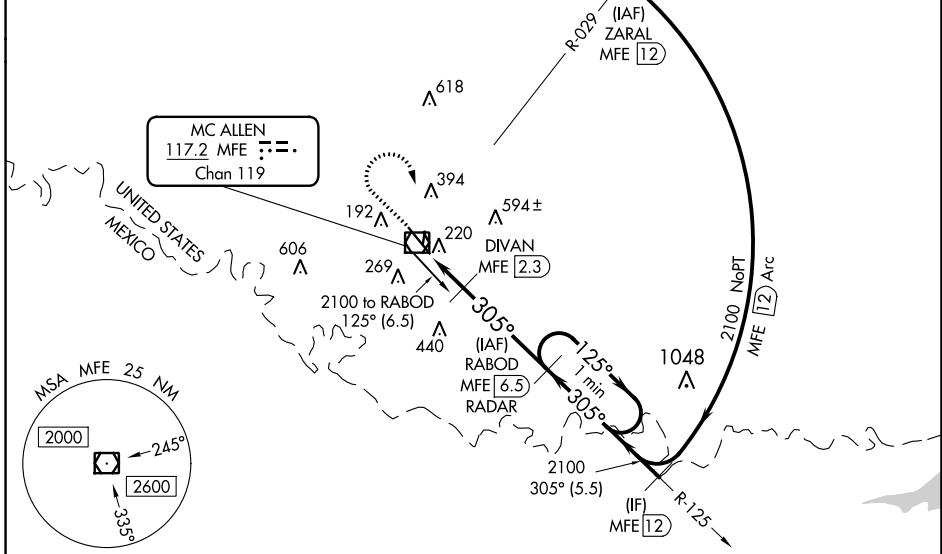
VOR/DME MFE <b>117.2</b> Chan <b>119</b>	APP CRS <b>305°</b>	Rwy Idg <b>7120</b> TDZE <b>102</b> Apt Elev <b>107</b>
--	------------------------	---

# VOR RWY 32

MC ALLEN INTL (MFE)

<p><b>⚠</b> Circling NA northeast of Rwy 14-32. When local altimeter setting not received, use Weslaco altimeter setting and increase all MDA 40 feet and S-32 Cat C/D and Circling Cat C visibility <math>\frac{1}{8}</math> mile, increase DIVAN Fix Minimums S-32 Cat C/D visibility <math>\frac{1}{8}</math> mile. VDP NA when using Weslaco altimeter setting.</p>		<p>MISSED APPROACH: Climb to 900 then climbing right turn to 2100 direct MFE VOR/DME.</p>		
ATIS <b>128.5</b>	VALLEY APP CON <b>126.55 377.2</b>	MC ALLEN TOWER* <b>118.5 (CTAF) 256.9</b>	GND CON <b>121.8</b>	UNICOM <b>122.95</b>

## DME or RADAR REQUIRED



SC-3, 18 APR 2024 to 16 MAY 2024

SC-3, 18 APR 2024 to 16 MAY 2024

ELEV 107	<b>D</b>	TDZE 102			
<p>REIL Rwy 32 HIRL Rwy 14-32 MIRL Rwy 18-36</p>					
<p>FAF to MAP 5.9 NM</p>					
Knots	60	90	120	150	180
Min:Sec	5:54	3:56	2:57	2:22	1:58

900	2100	MFE	RABOD MFE 6.5 RADAR	One Minute Holding Pattern
<p>MFE VOR/DME MFE 0.6</p>		<p>MFE 1.6</p>	<p>DIVAN MFE 2.3</p>	<p>2100</p>
<p>1 NM</p>		<p>0.7 NM</p>	<p>4.2 NM</p>	<p>125°</p> <p>305°</p> <p>3.09° TCH 52</p> <p>*700 when using Weslaco altimeter setting.</p>
CATEGORY	A	B	C	D
S-32	660-1	558 (600-1)	660-1 $\frac{1}{8}$	558 (600-1 $\frac{1}{8}$ )
<b>C</b> CIRCLING	660-1	553 (600-1)	660-1 $\frac{1}{8}$ 553 (600-1 $\frac{1}{8}$ )	800-2 $\frac{1}{4}$ 693 (700-2 $\frac{1}{4}$ )
DIVAN FIX MINIMUMS				
S-32	480-1 378 (400-1)			
<b>C</b> CIRCLING	580-1	473 (500-1)	580-1 $\frac{1}{2}$ 473 (500-1 $\frac{1}{2}$ )	800-2 $\frac{1}{4}$ 693 (700-2 $\frac{1}{4}$ )