

LOC I-SBP 109.7	APP CRS 110°	Rwy Idg 5300
		TDZE 198
		Apt Elev 212

ILS or LOC RWY 11

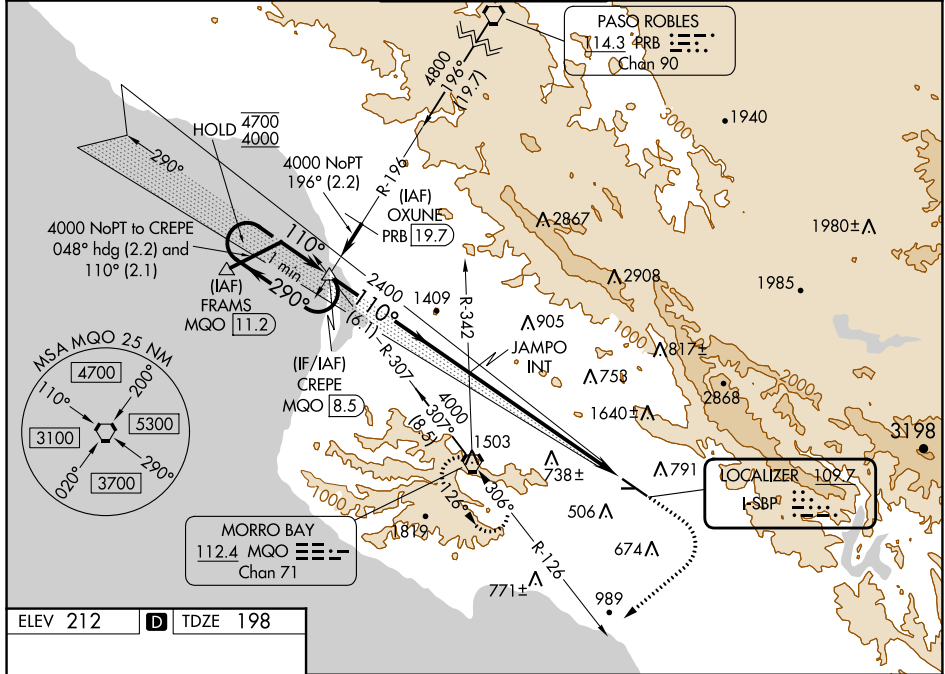
SAN LUIS OBISPO COUNTY RGNL (SBP)

⚠ Circling Rwy 25 NA at night. Circling NA north of Rwy 11-29. Autopilot coupled approach NA below 677. For inop ALS, increase S-ILS 11 all Cats visibility to 7/8 SM, S-LOC 11 Cat A visibility to 1/4 SM, Cat B visibility to 1/2 SM.



MISSED APPROACH: Climb to 1000 then climbing right turn to 3300 on heading 215° and MQO VORTAC R-126 to MQO VORTAC and hold, continue climb-in-hold to 3300. S-ILS 11* missed approach requires minimum climb of 210 feet per NM to 1160.

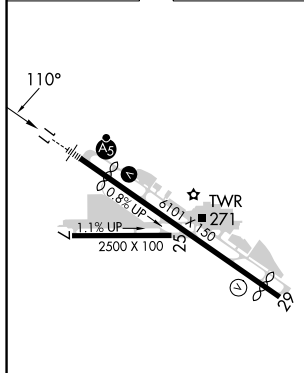
ATIS* 120.6	SANTA BARBARA APP CON* 127.725 244.575	SAN LUIS TOWER* 124.0 (CTAF) 379.9	GND CON 121.6	UNICOM 122.95
-----------------------	--	--	-------------------------	-------------------------



SW-3, 18 APR 2024 to 16 MAY 2024

SW-3, 18 APR 2024 to 16 MAY 2024

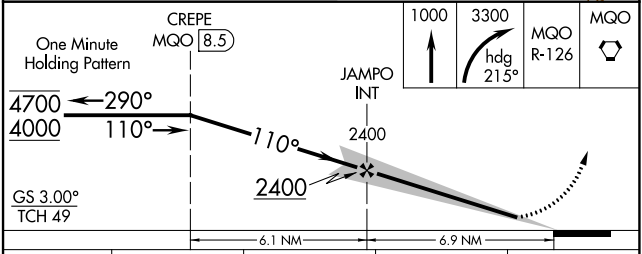
ELEV 212	D TDZE 198
----------	-------------------



REIL Rwy 29 **Ⓛ**
HIRL Rwy 11-29 **Ⓛ**

FAF to MAP 6.9 NM

Knots	60	90	120	150	180
Min:Sec	6:54	4:36	3:27	2:46	2:18



CATEGORY	A	B	C	D
S-ILS 11*	398-1/2		200 (200-1/2)	
S-ILS 11	495-1/2		297 (300-1/2)	
S-LOC 11	1420-3/4 1222 (1300-3/4)	1420-1 1222 (1300-1)	1420-3	1222 (1300-3)
CIRCLING	1420-1 1/4 1208 (1300-1 1/4)	1420-1 1/2 1208 (1300-1 1/2)	1500-3	1760-3 1548 (1600-3)