

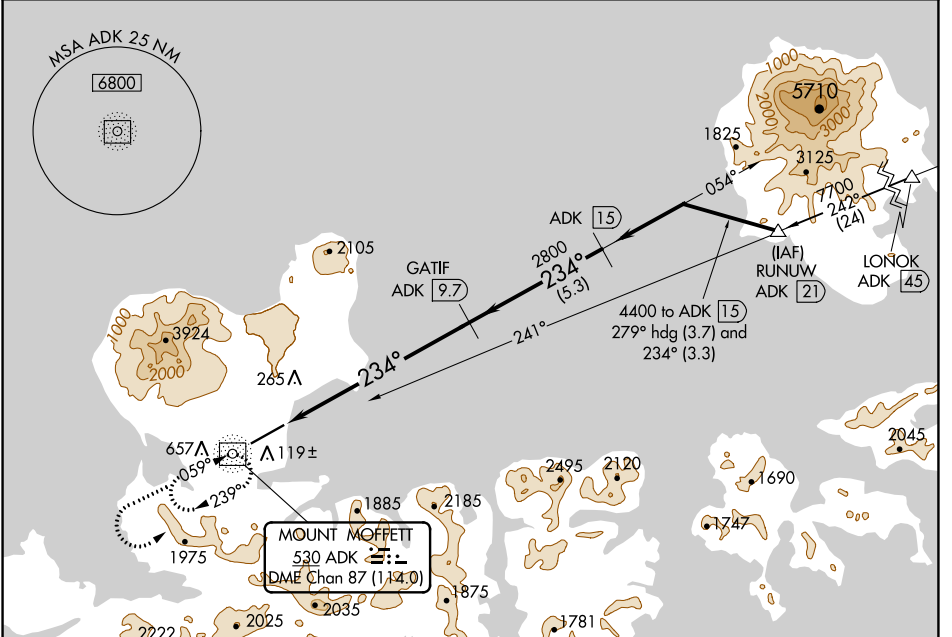
NDB/DME ADK 530	APP CRS 234°	Rwy ldg 6190
Chan 87 (114.0)		TDZE 17
		Apt Elev 20

NDB/DME RWY 23

ADAK (ADK)(PADK)

<p>Circling not authorized at night. Circling NA northwest of Rwy 5-23.</p>	<p>MALS</p>	<p>MISSED APPROACH: Climb to 5000 via direct ADK NDB/DME and ADK NDB/DME 234° bearing, then climbing left turn to 9000 direct ADK NDB/DME and hold.</p>

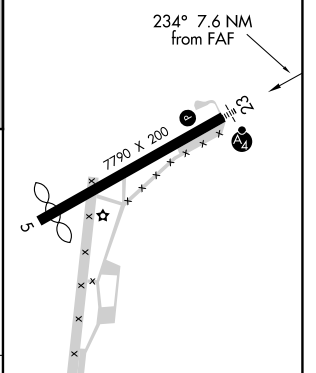
AWOS-3P 134.5	ANCHORAGE CENTER 126.4 254.3	CTAF 122.9
-------------------------	--	----------------------



AK, 21 MAR 2024 to 16 MAY 2024

AK, 21 MAR 2024 to 16 MAY 2024

ELEV 20	D TDZE 17
---------	------------------



5000	9000	ADK	VGSI and descent angles not coincident (VGSI Angle 3.50/TCH 53).	ADK 15
ADK 234°				
ADK NDB/DME	ADK 2.7		GATIF ADK 9.7	4400
			2800	
			$\le 3.38^\circ$ TCH 43	
	0.6	7 NM	5.3 NM	

CATEGORY	A	B	C	D
S-23	1600/60 1583 (1600-1¼)	1600-1½ 1583 (1600-1½)	1600-3 1583 (1600-3)	
CIRCLING	1600-1¼ 1580 (1600-1¼)	1600-1½ 1580 (1600-1½)	1600-3 1580 (1600-3)	2540-3 2520 (3000-3)

REIL Rwy 23

HIRL Rwy 5-23