

LOC/DME I-BSC 111.75 Chan 54(Y)	APP CRS 149°	Rwy Idg TDZE 151 Apt Elev 151
---	------------------------	---

ILS RWY 15

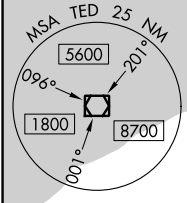
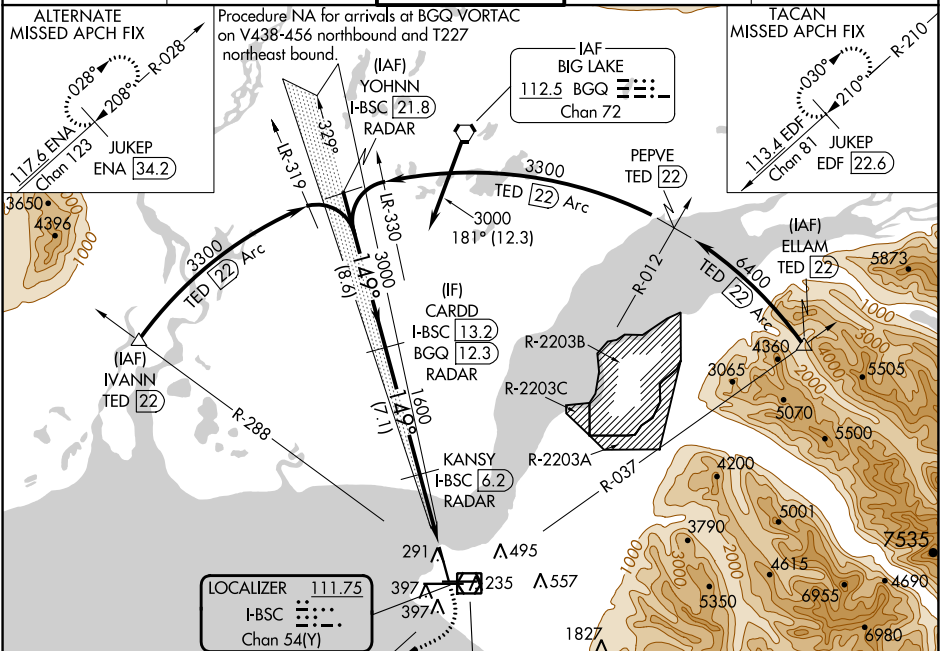
TED STEVENS ANCHORAGE INTL (ANC) (PANC)

DME required.

22°C Inop table does not apply.

MALSF MISSED APPROACH: Climb to 800 then climbing right turn to 3000 on heading 200° and TED VOR/DME R-210 to JUKEP/TED 15 DME and hold. (TACAN aircraft climb to 800 then climbing right turn to 3000 on heading 200 and on EDF TACAN R-210 to JUKEP/EDF 22.6 DME and hold)

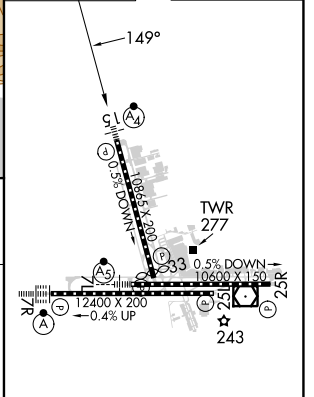
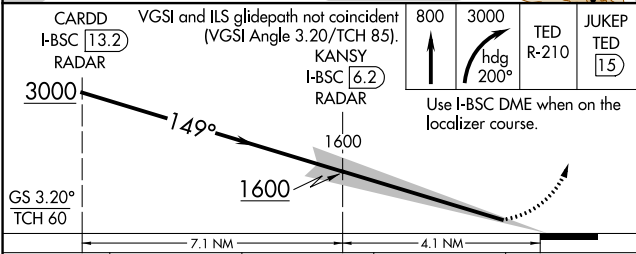
D-ATIS 135.5	ANCHORAGE APP CON 118.6 290.5	ANCHORAGE TOWER 118.3 257.8	GND CON 121.9 338.25	CLNC DEL 119.4 323.1
------------------------	---	---------------------------------------	--------------------------------	--------------------------------



LOCALIZER 111.75
I-BSC
Chan 54(Y)

ANCHORAGE 113.15 TED
Chan 78(Y)

ELEV 151 **D** TDZE 151



CATEGORY	A	B	C	D
S-ILS 15	351/40	200 (200-¾)	401/40	250 (300-¾)

REIL Rwy 33
TDZ/CL Rws 7L and 7R
HIRL all Rws

AK, 21 MAR 2024 to 16 MAY 2024

AK, 21 MAR 2024 to 16 MAY 2024