

WAAS CH 62803 W10A	APP CRS 096°	Rwy Idg TDZE Apt Elev	4199 673 673
--	------------------------	-----------------------------	---

RNAV (GPS) RWY 10

WOOD COUNTY (1G4)

RNP APCH.

▽ Circling Rwy 36 NA at night. VDP NA when using Toledo Express altimeter setting.
△ NA When local altimeter setting not received, use Toledo Express altimeter setting; increase DA to 974 feet; increase all MDA 40 feet and LNAV Cat C visibility ¼ SM, Circling Cat C/D visibility ¼ SM.

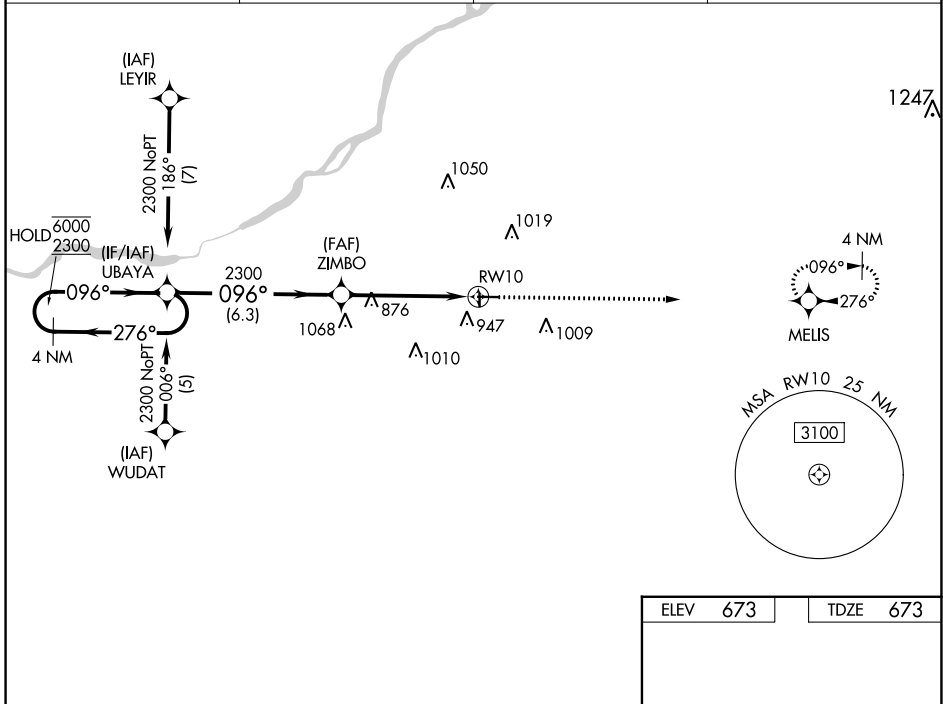
MISSED APPROACH:
Climb to 2300 direct MELIS and hold.

AWOS-3
120.725

TOLEDO APP CON
126.1 317.55

CLNC DEL
125.6

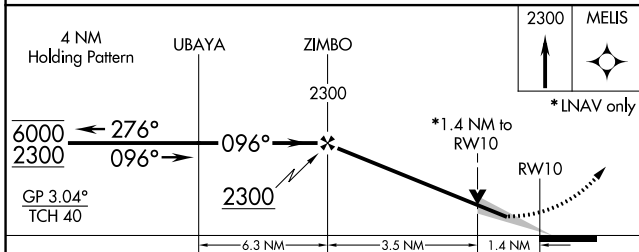
UNICOM
122.975 (CTAF) 1



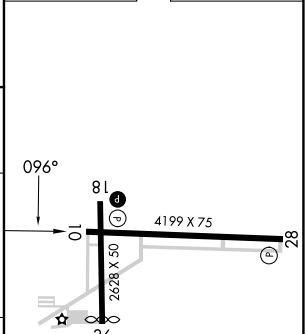
EC-2, 18 APR 2024 to 16 MAY 2024

EC-2, 18 APR 2024 to 16 MAY 2024

ELEV	673	TDZE	673
------	-----	------	-----



CATEGORY	A	B	C	D
LPV DA	939-1		266 (300-1)	
LNAV MDA	1160-1	487 (500-1)	1160-1 3/8 487 (500-1 3/8)	1160-1 1/2 487 (500-1 1/2)
CIRCLING	1300-1	627 (700-1)	1320-1 3/4 647 (700-1 3/4)	1320-2 647 (700-2)



REIL Rwy 10, 18, and 28 1
MRL Rwy 10-28 and 18-36 1