

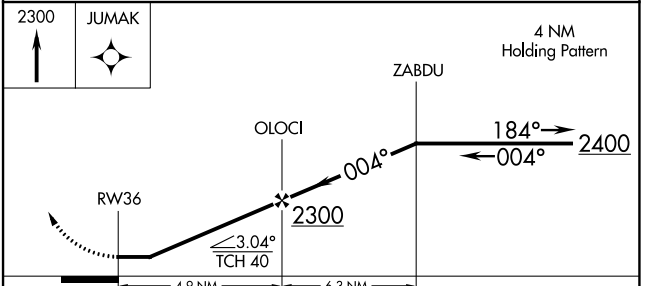
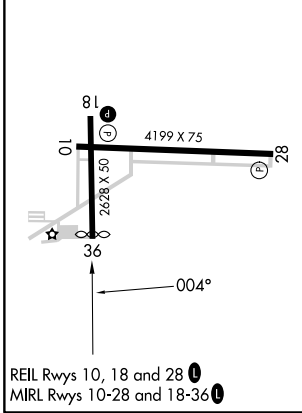
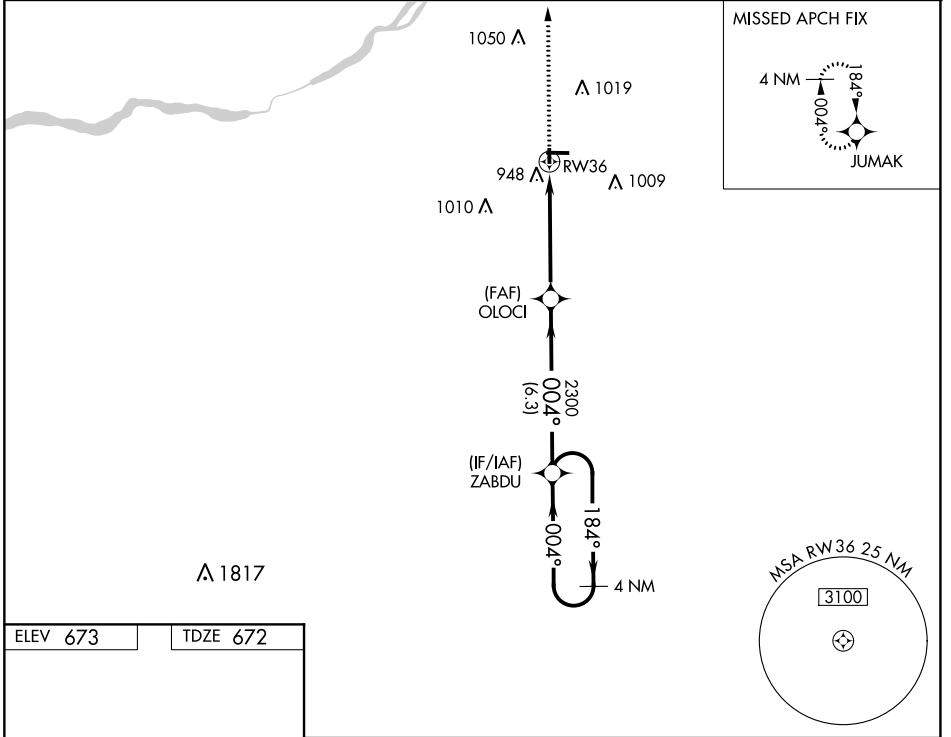
APP CRS	Rwy Idg	2560
004°	TDZE	672
	Apt Elev	673

RNAV (GPS) RWY 36

WOOD COUNTY (1G \emptyset)

RNP APCH.	Rwy 36 helicopter visibility reduction below 1 SM NA. When local altimeter setting not received, use Toledo Express altimeter setting and increase all MDAs 40 feet. Straight-in and Circling Rwy 36 NA at night.	MISSED APPROACH: Climb to 2300 direct JUMAK and hold.
-----------	---	---

AWOS-3 120.725	TOLEDO APP CON 126.1 317.55	CLNC DEL 125.6	UNICOM 122.975 (CTAF) 1
--------------------------	---------------------------------------	--------------------------	--



CATEGORY	A	B	C	D
LNAV MDA	1260-1	588 (600-1)	NA	
C CIRCLING	1300-1	627 (700-1)	NA	

EC-2, 18 APR 2024 to 16 MAY 2024

EC-2, 18 APR 2024 to 16 MAY 2024