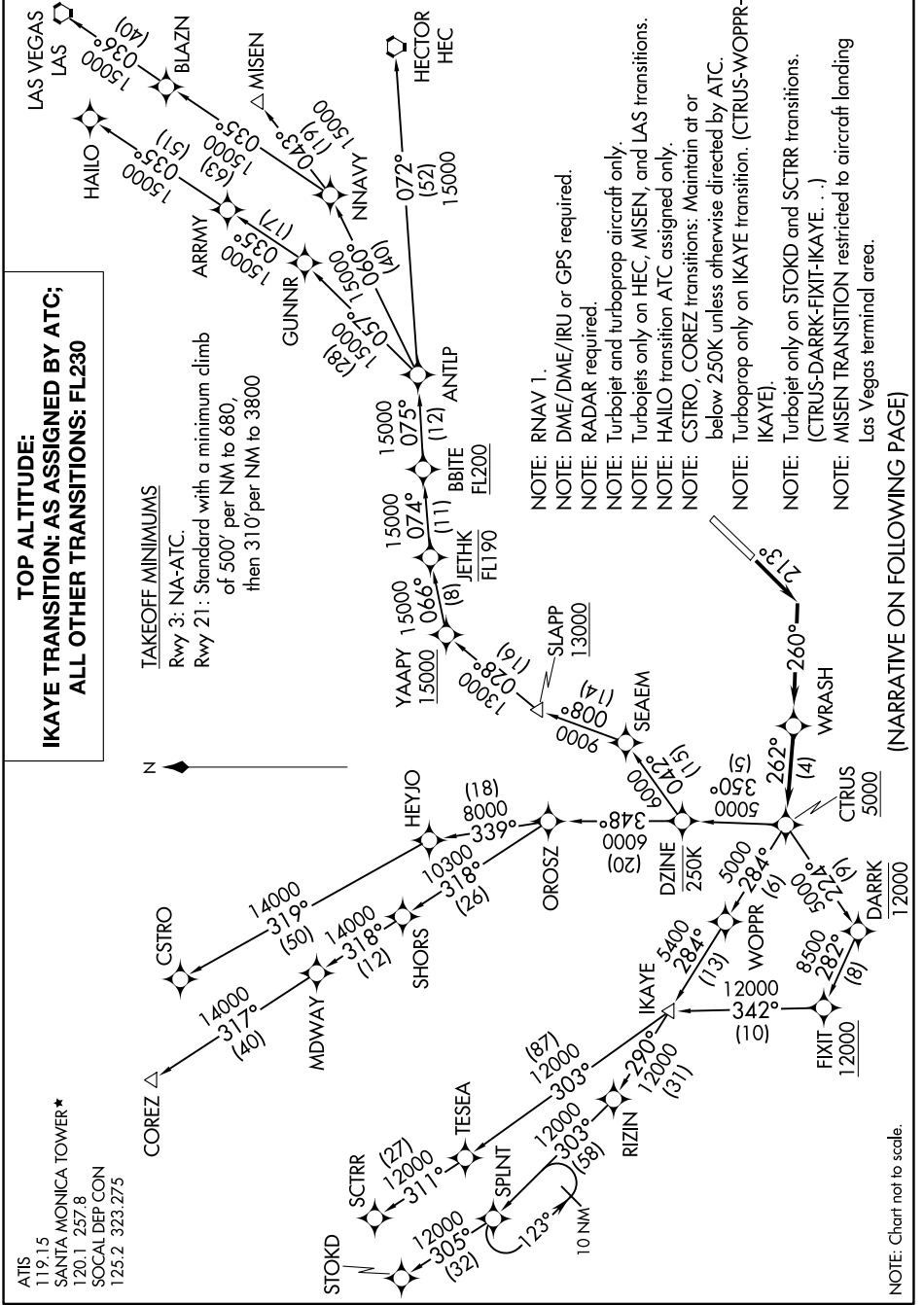


# CTRUS FOUR DEPARTURE (RNAV)

AL-5023 (FAA)

SANTA MONICA MUNI (SMO)  
SANTA MONICA, CALIFORNIA

SW-3, 18 APR 2024 to 16 MAY 2024



ATIS 119.15  
 SANTA MONICA TOWER\* 120.1 257.8  
 SOCIAL DEP CON 125.2 323.275



**TAKEOFF MINIMUMS**  
 Rwy 3: NA-ATC.  
 Rwy 21: Standard with a minimum climb of 50' per NM to 680, then 310' per NM to 3800

**TOP ALTITUDE:**  
**IKAYE TRANSITION: AS ASSIGNED BY ATC;**  
**ALL OTHER TRANSITIONS: FL230**

- NOTE: RNAV 1.
- NOTE: DME/DME/IRU or GPS required.
- NOTE: RADAR required.
- NOTE: Turbojet and turboprop aircraft only.
- NOTE: Turbojets only on HEC, MISEN, and LAS transitions.
- NOTE: HALO transition ATC assigned only.
- NOTE: CSTR0, COREZ transitions: Maintain at or below 250K unless otherwise directed by ATC.
- NOTE: Turboprop only on IKAYE transition. (CTRUS-WOPPR- IKAYE).
- NOTE: Turbojet only on STOKD and SCTRR transitions. (CTRUS-DARRK-FIXIT- IKAYE. ...)
- NOTE: MISEN TRANSITION restricted to aircraft landing Las Vegas terminal area.

(NARRATIVE ON FOLLOWING PAGE)

NOTE: Chart not to scale.

SW-3, 18 APR 2024 to 16 MAY 2024

# CTRUS FOUR DEPARTURE (RNAV)

SANTA MONICA, CALIFORNIA  
SANTA MONICA MUNI (SMO)