

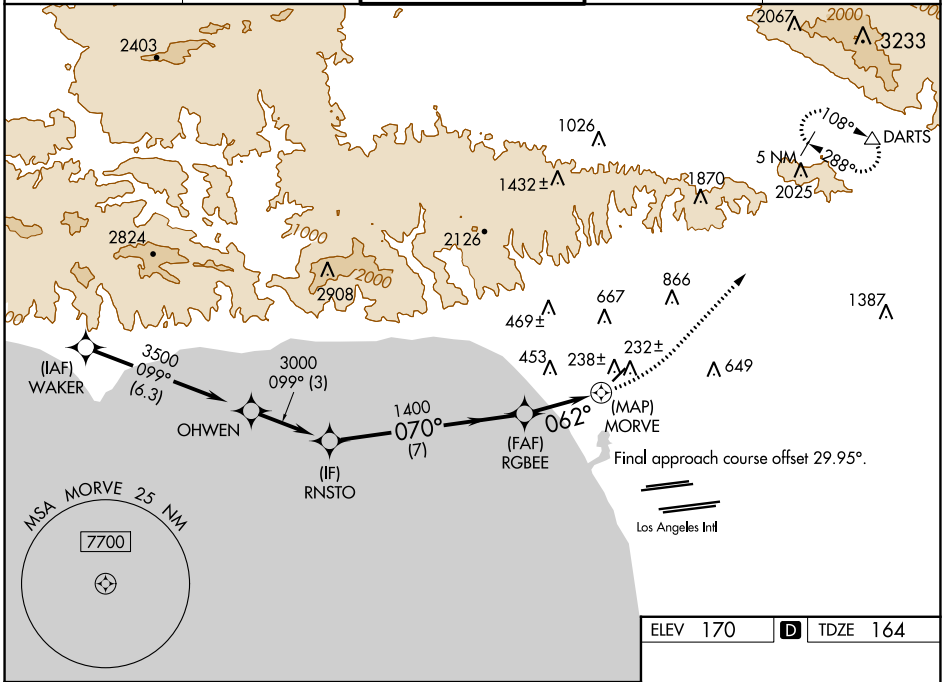
WAAS CH <b>77839</b> <b>W03B</b>	APP CRS <b>062°</b>	Rwy Idg TDZE <b>164</b> Apt Elev <b>170</b>
--	------------------------	---

# RNAV (GPS) Z RWY 3

SANTA MONICA MUNI (SMO)

<p><b>▽</b> <b>△</b> Rwy 3 helicopter visibility reduction below 1 SM NA. DME/DME RNP-0.3 NA.</p>	<p>MISSED APPROACH: Climb to 600 then climbing left turn to 5000 direct DARTS and hold, do not exceed 175K when continuing climb-in-hold to 5000. *Missed approach requires minimum climb of 290 feet per NM to 3800.</p>
---	---

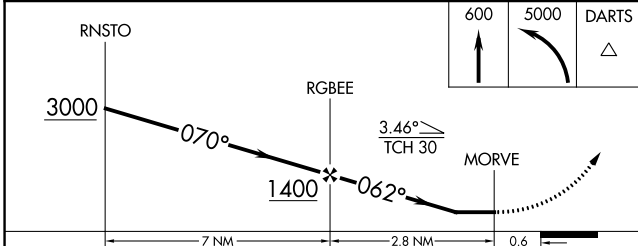
ATIS <b>119.15</b>	SOCAL APP CON <b>135.05 317.5</b>	SANTA MONICA TOWER * <b>120.1 (CTAF) 257.8</b>	GND CON <b>121.9</b>	UNICOM <b>122.95</b>
-----------------------	--------------------------------------	---	-------------------------	-------------------------



SW-3, 18 APR 2024 to 16 MAY 2024

SW-3, 18 APR 2024 to 16 MAY 2024

ELEV 170	<b>D</b> TDZE 164
----------	-------------------



CATEGORY	A	B	C	D
LP MDA*	460-1	296 (300-1)		NA
LP MDA	1260-1 1/4 1096 (1100-1 1/4)	1260-1 1/2 1096 (1100-1 1/2)		NA
LNAV MDA*	500-1	336 (400-1)		NA
LNAV MDA	1380-1 1/4 1216 (1300-1 1/4)	1380-1 1/2 1216 (1300-1 1/2)		NA

