


LOC I-PWWT <b>111.1</b>	APP CRS <b>197°</b>	Rwy Idg TDZE Apt Elev	<b>6000</b> <b>442</b> <b>444</b>
----------------------------	------------------------	-----------------------------	---

# ILS or LOC RWY 20

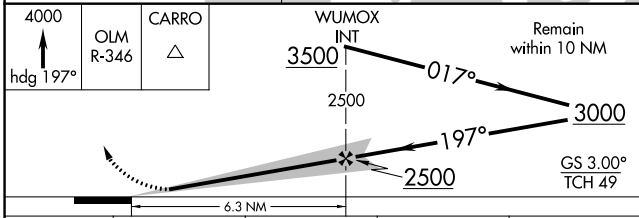
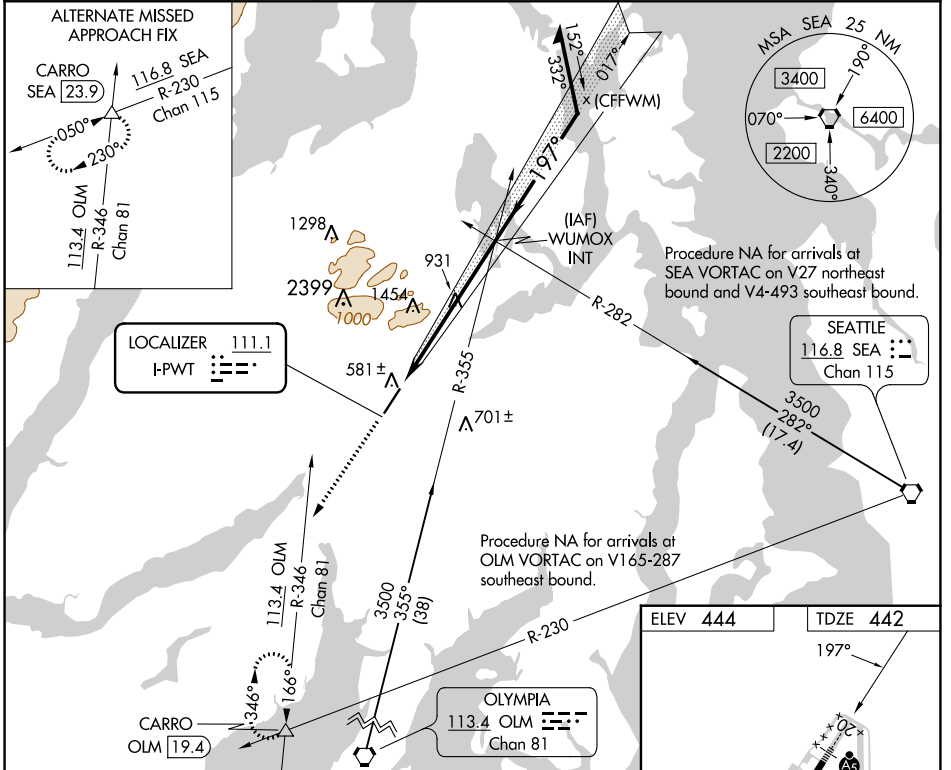
BREMERTON NTL (PWT)

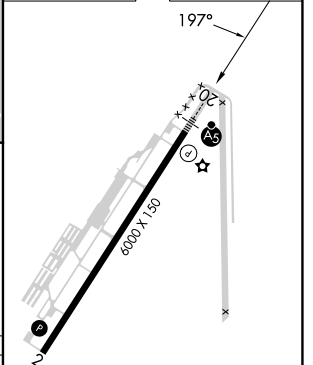
**⚠** Circling NA for Cats C and D west of Rwy 2-20. When local altimeter setting not received, use Seattle-Tacoma Intl altimeter setting and increase all DA 45 feet, all MDA 60 feet and increase S-LOC 20 Cat C and D visibility 1/2 SM, Circling Cat A, C and D visibility 1/2 SM. For inop ALS, increase S-LOC 20 Cat C and D visibility to 2 SM. For inop ALS, when using Seattle-Tacoma Intl altimeter setting, increase S-LOC 20 Cat C and D visibility to 2 1/2 SM.

**MALSR** 

**MISSED APPROACH:** Climb to 4000 on heading 197° and OLM VORTAC R-346 to CARRO INT/OLM 19.4 DME and hold, continue climb-in-hold to 4000.

AWOS-3PT <b>121.2</b>	SEATTLE APP CON <b>120.1 254.4 269.125</b>	UNICOM <b>123.05 (CTAF) 0</b>
--------------------------	---	----------------------------------



ELEV 444	TDZE 442
197°	
	
REIL Rwy 2 <b>0</b>	
HIRL Rwy 2-20 <b>0</b>	
FAF to MAP 6.3 NM	
Knots	60 90 120 150 180
Min:Sec	6:18 4:12 3:09 2:31 2:06

CATEGORY	A	B	C	D
S-ILS 20	642-1/2 200 (200-1/2)			
S-LOC 20	1200-1/2 758 (800-1/2)	1200-3/4 758 (800-3/4)	1200-1 3/4 758 (800-1 3/4)	758 (800-1 3/4)
<b>C</b> CIRCLING	1200-1 756 (800-1)	1200-1 1/4 756 (800-1 1/4)	1200-2 1/4 756 (800-2 1/4)	1240-2 1/2 796 (800-2 1/2)

NW-1, 18 APR 2024 to 16 MAY 2024

NW-1, 18 APR 2024 to 16 MAY 2024