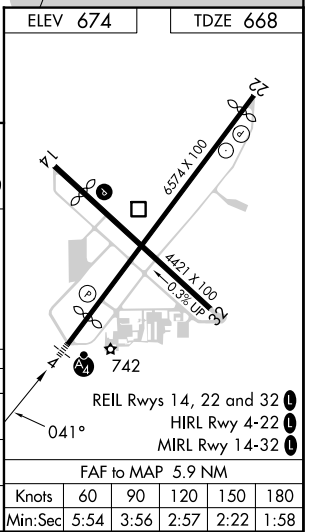
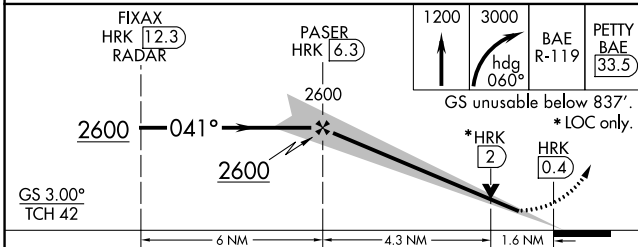
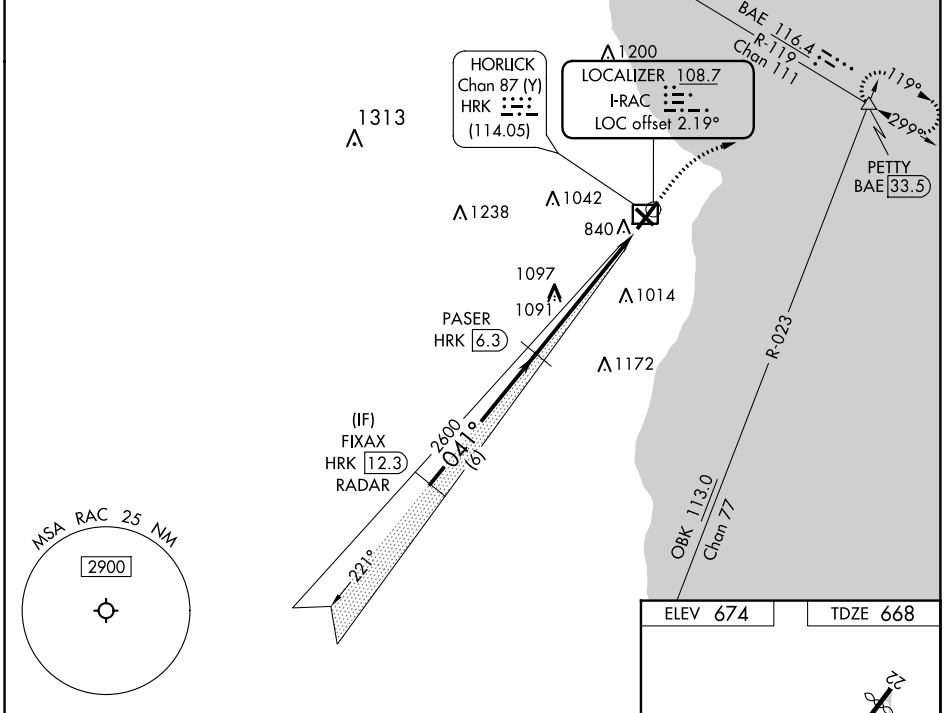


LOC I-RAC 108.7	APP CRS 041°	Rwy Idg 5840	TDZE 668
		Apt Elev 674	

ILS or LOC RWY 4
BATTEN INTL (RAC)

RADAR required for procedure entry. DME required.		MALSF 	MISSED APPROACH: Climb to 1200 then climbing right turn to 3000 on heading 060° and BAE VOR/DME R-119 to PETTY/BAE 33.5 DME and hold, continue climb-in-hold to 3000.
<p>▼ Circling Rwy 14 NA at night. ▲ Rwy 4 helicopter visibility reduction below ¾ SM NA. Inop table does not apply to S-ILS 4. DME from HRK DME. Simultaneous reception of I-RAC and HRK DME required.</p>			

ASOS 121.425	MILWAUKEE APP CON 135,875 317,725	CLNC DEL 120.15	UNICOM 123.075 (CTAF) 0
------------------------	---	---------------------------	-----------------------------------



CATEGORY	A	B	C	D
S-ILS 4	923-¾		255 (300-¾)	
S-LOC 4	1220-¾		552 (600-¾)	
CIRCLING	1220-1		546 (600-1)	
			1380-2 706 (800-2)	
			1380-2¼ 706 (800-2¼)	

EC-3, 18 APR 2024 to 16 MAY 2024

EC-3, 18 APR 2024 to 16 MAY 2024

ELEV 674	TDZE 668
Knots	60 90 120 150 180
Min:Sec	5:54 3:56 2:57 2:22 1:58