

APP CRS	Rwy Idg	4421
315°	TDZE	667
	Apt Elev	674

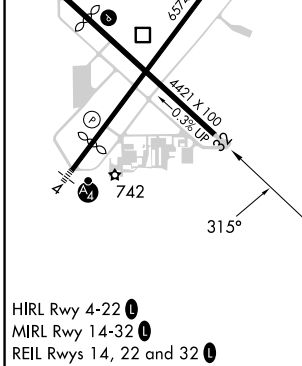
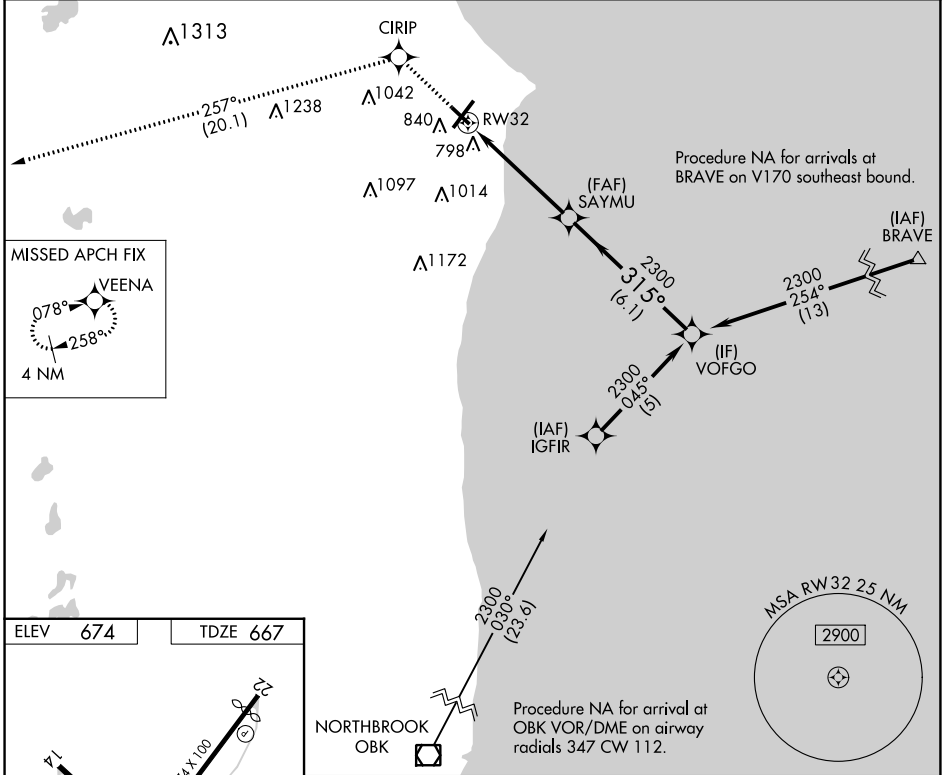
RNAV (GPS) RWY 32

BATTEN INTL (RAC)

▼ DME/DME RNP-0.3 NA. VDP NA when using General Mitchell Intl altimeter setting.
▲ When local altimeter setting not received, use General Mitchell Intl altimeter setting:
 Increase all MDA 40 feet and visibility Cat C and D ¼ SM. Rwy 32 helicopter
 visibility reduction below ¾ SM NA. Circling Rwy 14 NA at night.

MISSED APPROACH: Climb to 3000 direct CIRIP and track 257° to VEENA and hold.

ASOS 121.425	MILWAUKEE APP CON 135.875 317.725	CLNC DEL 120.15	UNICOM 123.075 (CTAF) 0
------------------------	---	---------------------------	-----------------------------------



3000	CIRIP	VEENA	SAYMU		VOFGO	
↑	✧	tr 257° ✧	1.1 NM to RW32		315° 2300	
			RW32		2300	
			1.1 NM		3.9 NM	
			1.1 NM		6.1 NM	
CATEGORY	A	B	C	D		
LNAV MDA	1060-1	393 (400-1)	1060-1½	393 (400-1½)		
CIRCLING	1140-1 466 (500-1)	1160-1 486 (500-1)	1380-2 706 (800-2)	1380-2½ 706 (800-2½)		

EC-3, 18 APR 2024 to 16 MAY 2024

EC-3, 18 APR 2024 to 16 MAY 2024