

WAAS CH 97516 W04A	APP CRS 039°	Rwy Idg TDZE Apt Elev	5840 668 674
--	------------------------	-----------------------------	---

RNAV (GPS) RWY 4

BATTEN INTL (RAC)

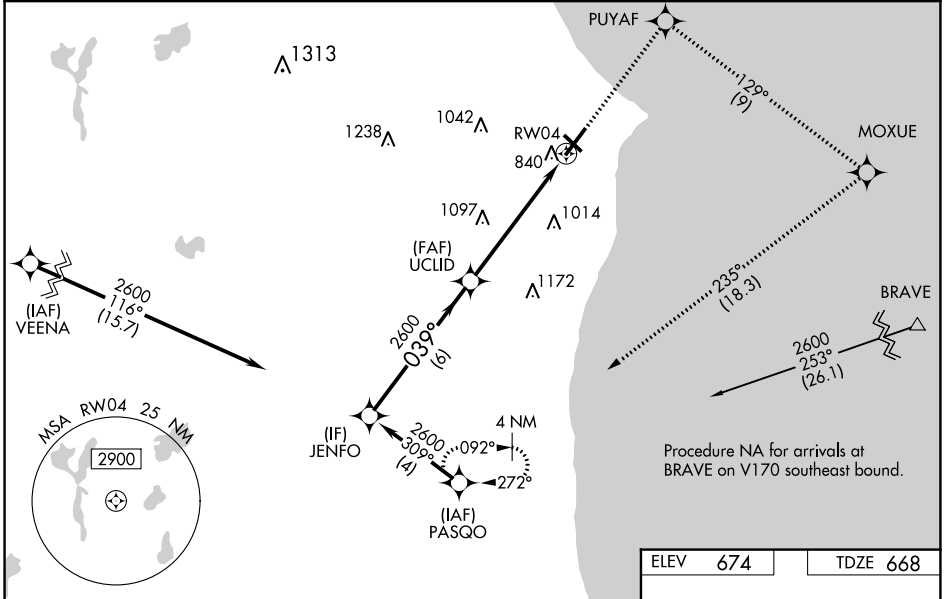
⚠ Baro-VNAV NA when using General Mitchell Intl altimeter setting. For uncompensated Baro-VNAV systems, LNAV/VNAV NA below -20°C (-4°F) or above 54°C (130°F). DME/DME RNP-0.3 NA. VDP NA when using General Mitchell Intl altimeter setting. When local altimeter setting not received, use General Mitchell Intl altimeter setting; increase LPV DA to 1023 and all visibilities 1/8 SM; increase LNAV/VNAV DA to 1135 and all visibilities 1/8 SM; increase all MDA 40 feet and visibility Cat C and D 1/8 SM. Circling Rwy 14 NA at night. Rwy 4 helicopter visibility reduction below 3/8 SM NA. Inop table does not apply.

MALSF



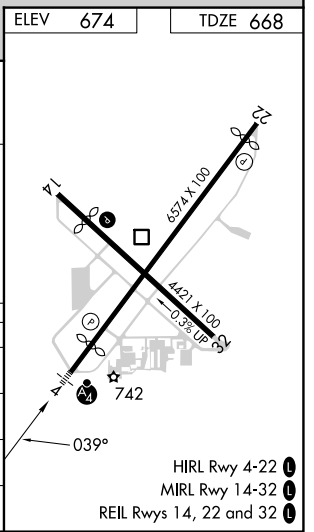
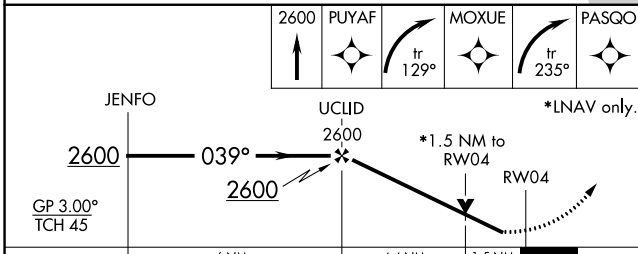
MISSED APPROACH:
Climb to 2600 direct PUYAF and right turn on track 129° to MOXUE and right turn on track 235° to PASQO and hold.

ASOS 121.425	MILWAUKEE APP CON 135.875 317.725	CLNC DEL 120.15	UNICOM 123.075 (CTAF) 📻
------------------------	---	---------------------------	--



EC-3, 18 APR 2024 to 16 MAY 2024

EC-3, 18 APR 2024 to 16 MAY 2024



CATEGORY	A	B	C	D
LPV DA	988-1		320 (400-1)	
LNAV/VNAV DA	1100-1½		432 (500-1½)	
LNAV MDA	1180-1	512 (600-1)	1180-1¾	512 (600-1¾)
C CIRCLING	1180-1	506 (600-1)	1380-2 706 (800-2)	1380-2¼ 706 (800-2¼)