

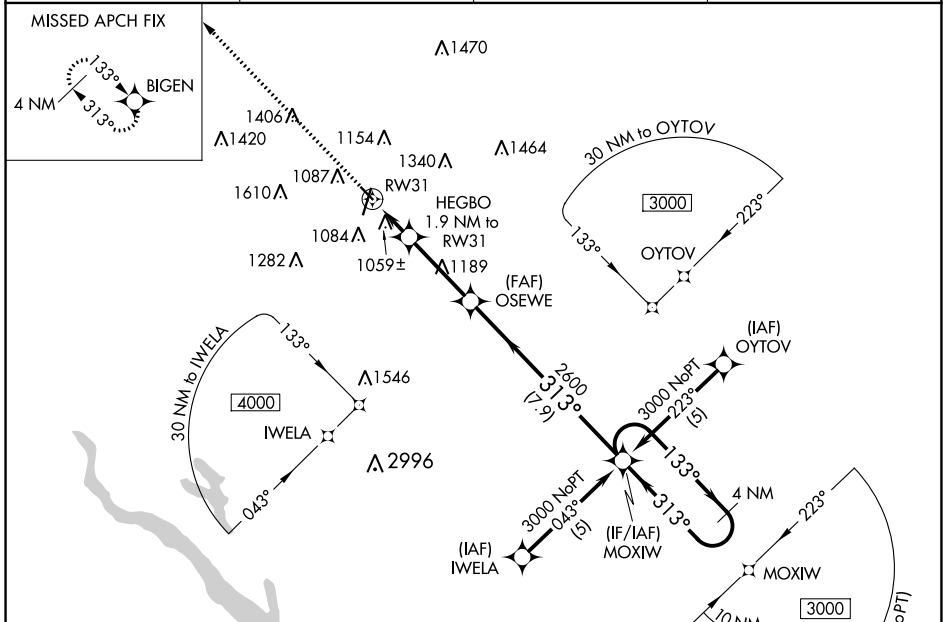
WAAS CH 90517 W31A	APP CRS 313°	Rwy Idg TDZE Apt Elev	3491 930 956
--	------------------------	-----------------------------	---

RNAV (GPS) RWY 31

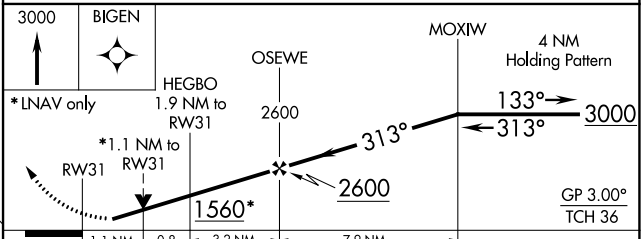
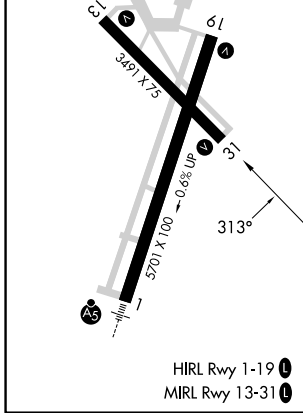
AMES MUNI (AMW)

RNP APCH.	<p>▼ For uncompensated Baro-VNAV systems, LNAV/VNAV NA below -16°C or above 54°C. Rwy 31 helicopter visibility reduction below ¾ SM NA.</p> <p>✪ -27°C</p>	MISSED APPROACH: Climb to 3000 direct BIGEN and hold.
-----------	--	---

ASOS 132.025	DES MOINES APP CON 123.9 307.15	CLNC DEL 126.0	UNICOM 122.7 (CTAF) 0
------------------------	---	--------------------------	---------------------------------



ELEV 956	TDZE 930
----------	----------



CATEGORY	A	B	C	D
LPV DA	1205-1	275 (300-1)		NA
LNAV/VNAV DA	1436-1¾	506 (500-1¾)		NA
LNAV MDA	1320-1	390 (400-1)		NA

NC-3, 18 APR 2024 to 16 MAY 2024

NC-3, 18 APR 2024 to 16 MAY 2024