

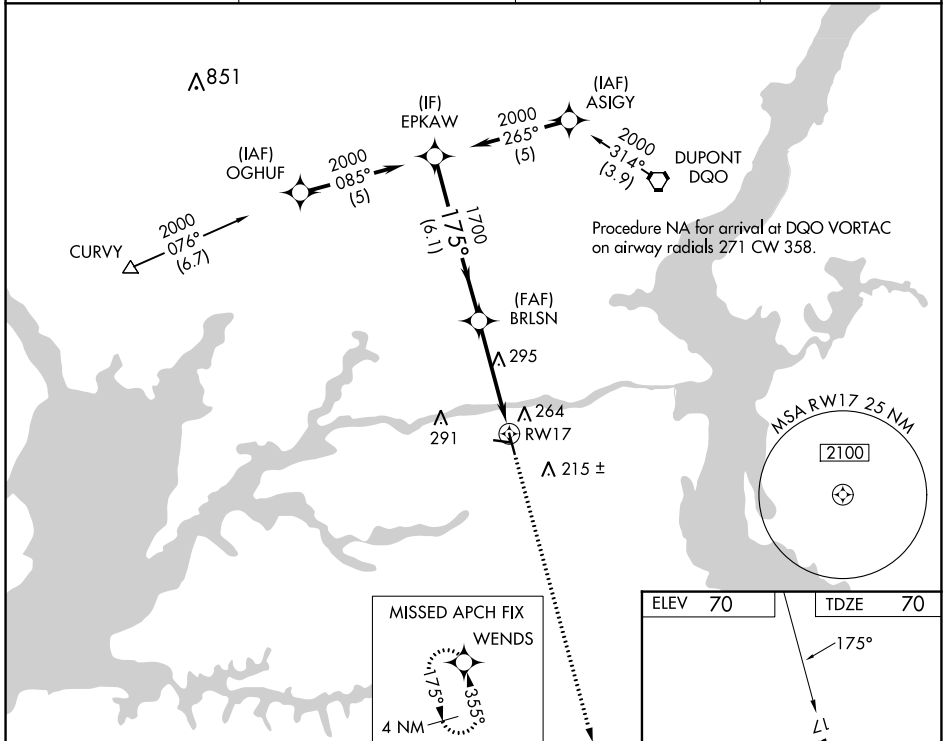
WAAS CH 49002 W17A	APP CRS 175°	Rwy Idg TDZE Apt Elev	4488 70 70
----------------------------------------	------------------------	-----------------------------	---------------------------------------

RNAV (GPS) RWY 17

SUMMIT (EVY)

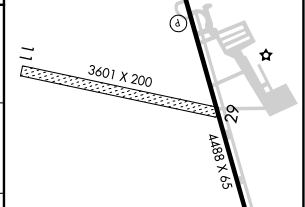
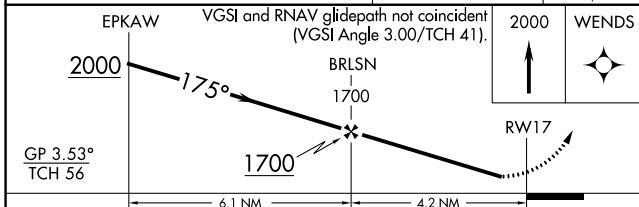
RNP APCH - GPS.		MISSED APPROACH: Climb to 2000 direct WENDS and hold.
<p>▼ Procedure NA at night. Rwy 17 helicopter visibility reduction below 1 SM NA.</p> <p>▲ For uncompensated Baro-VNAV systems, LNAV/VNAV NA below -15°C or above 54°C.</p>		

AWOS-3 132,325	PHILADELPHIA APP CON 118,35 323.1	UNICOM 122,725 (CTAF)	123.5
--------------------------	---------------------------------------------	---------------------------------	--------------



NE-3, 18 APR 2024 to 16 MAY 2024

NE-3, 18 APR 2024 to 16 MAY 2024



CATEGORY	A		B		C		D
	DA	MDA	DA	MDA	DA	MDA	MDA
LPV	541-1 $\frac{3}{8}$	471 (500-1 $\frac{3}{8}$)					NA
LNAV/VNAV	619-1 $\frac{5}{8}$	549 (600-1 $\frac{5}{8}$)					NA
LNAV MDA	560-1	490 (500-1)			560-1 $\frac{3}{8}$	490 (500-1 $\frac{3}{8}$)	NA

REIL Rwy 11 and 29

REIL Rwy 17 and 35

LIRL Rwy 11-29

MIRL Rwy 17-35