

WAAS CH <b>87130</b> <b>W35A</b>	APP CRS <b>353°</b>	Rwy Idg TDZE Apt Elev	<b>5501</b> <b>580</b> <b>592</b>
--	------------------------	-----------------------------	---

# RNAV (GPS) RWY 35

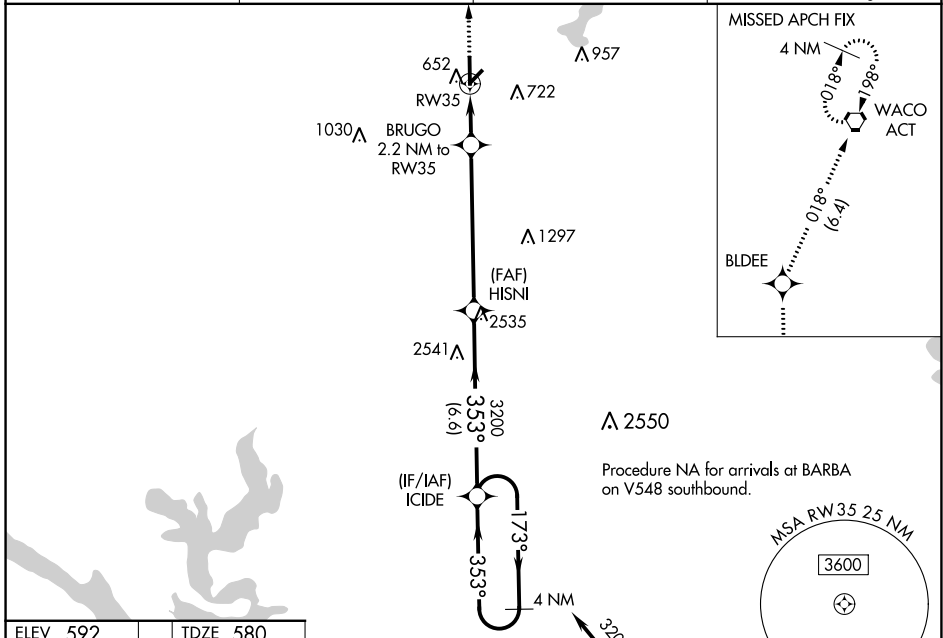
MC GREGOR EXEC (PWG)

RNP APCH - GPS

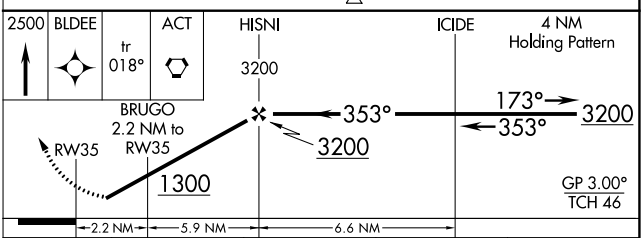
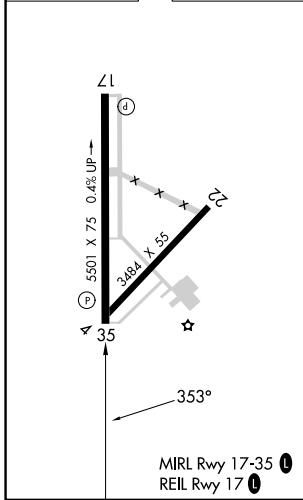
**ASR** Baro-VNAV NA when using Waco Rgnl altimeter setting. For uncompensated Baro-VNAV systems, LNAV/VNAV NA below -16°C or above 54°C. When local altimeter setting not received, use Waco Rgnl altimeter setting and increase LPV DA to 861 feet; increase LNAV/VNAV DA to 861 feet; increase all MDAs 40 feet and LNAV visibility Cat B 1/4 SM, and Circling visibility Cat B/C 1/4 SM. Rwy 35 helicopter visibility reduction below 3/4 SM NA.

**MISSED APPROACH:** Climb to 2500 direct BLDEE and on track 018° to ACT VORTAC and hold.

AWOS-3PT <b>135.525</b>	WACO APP CON * <b>127.65 352.0</b>	GCO <b>121.725</b>	UNICOM <b>122.8</b> (CTAF) <b>0</b>
----------------------------	---------------------------------------	-----------------------	--



ELEV 592	TDZE 580
----------	----------



CATEGORY	A	B	C	D
LPV DA	830-3/4	250 (300-3/4)		NA
LNAV/VNAV DA	830-3/4	250 (300-3/4)		NA
LNAV MDA	960-1	380 (400-1)	960-1 1/8 380 (400-1 1/8)	NA
CIRCLING	1020-1 428 (500-1)	1060-1 468 (500-1)	1300-2 708 (800-2)	NA

SC-3, 18 APR 2024 to 16 MAY 2024

SC-3, 18 APR 2024 to 16 MAY 2024